

Appalachian Pastel Society

January 2008

Appalachian Sunset - Kay Gordon

Letter from the President

I hope everyone had a very good and happy holiday. I know that I was fortunate to have a wedding, a party, Christmas with my whole family in attendance, and friends with whom to share my experiences.

I don't know about you but I am really looking forward to the New Year with excitement for our organization. We keep growing and becoming better and better. We have grown from 13 people a year ago September to over 50 as of the November show. We even have a member from New Mexico. I think she beats out any other long distance members so far. Almost everything that has been said about our organization has been positive. That which hasn't, has been understood as something we should work on. Don't hesitate to offer suggestions for our improvement. We are a new organization and will continue to grow in the most positive manner we are able, but only with your help and input.

Beverly Kies has come on board as our new program chairman and she has some really good meetings planned. Kay Gordon has said that she will stay on to work on the 2008 exhibition. We need someone to help coordinate a workshop in conjunction with it. It is not that hard and there are others (like myself) that have done this and can help advise you if you take this on. Workshops are always the moneymaker for any organization. There will come a time when we can no longer get the kind of program person without having to pay them a stipend (small or slightly more). So we will need to have some money in the bank for such a case.

Please inform us, if you can, at least 2 months in advance, of any program engagements you or any other pastelist may have, gallery openings and their addresses, or anything you may think we may be interested in seeing (museums, shows, etc.), doing, or entering. Many of us are in other organizations or shows that are not known by others or do not have the info or contact info for these.

Let's make a big showing and make Western North Carolina aware that there is such a medium as pastel and that it is being used, enjoyed, and shared with anyone who is interested by our organization.

Please remember to thank any and all who helped to make our annual exhibition such a roaring success. If it wasn't for Kay Gordon taking on the chairmanship for it, She deserves much more than we could ever give her for all of the time she spent in organizing, working (Continued on page 2, bottom of 3rd column.)

In This Issue...

**Page 2... Meetings
and Events**

**Page 3... Exhibitions
Workshops**

**Page 4... News
and Happenings**

Page 5... Meeting Minutes

**Page 6... APS 2nd Annual
Juried Art Exhibit
Award Winner
Paintings**

**Page 7... Ella Maguire
Award**

**Page 8... APS Membership
Application**

Board of Directors

Officers

President - Karen Chambers
Vice President - Beverly Kies
Secretary - Nancy Clausen
Treasurer - Robbins Richardson

Committees

Directory:

Pam Potter

Exhibitions:

Kay Gordon
Fran Greenberg
Al Junek
Suzanne Karnatz
Mary Robinson
Merritt Roach

Finance:

Denise Geiger

Programs:

Denise Geiger
Nancy Clausen

Publicity:

Kay Gordon
Connie Vlahoulis

Telephone:

Joan Engle
Pat Spangler

Workshops:

Suzanne Doddridge
Coleen Hester
Al Junek
Suzi Karnatz

Exhibitions and Newsletter Submission Dates

If you know of any exhibitions coming up, especially those within 3-4 hours of Asheville, let us know. Please allow enough lead-time (at least a month) for publication.

Meetings and Events

Appalachian Pastel Society (APS) Meeting

The APS meeting will be held Saturday, January 12, 2008, from 10 am - 12 noon, at the Swannanoa Valley Fine Art League Studio, at 999 Old Highway 70 in Black Mountain, NC.

This month's guest artist is Paul de Marrais from Knoxville, TN. Paul is a pastel artist, workshop instructor, and author about pastels. He also makes his own line of hand made soft pastels and a premium-sanded surface for pastel. With over thirty year's experience, Paul's demo and presentation promises to be very interesting and informative. To learn more about him, please visit his website at www.pauldemarrais.com.

APS 2nd Annual Show Concluded

Congratulations to all who had artwork accepted into this year's APS Exhibition.

There were 40 paintings submitted to the jurying process. Our juror, Luana Luconi Winner, setting very high standards, accepted only 20. The resulting show was a wonderful, strong presentation that spoke so well for the Appalachian Pastel Society.

Every painting submitted to the show was given a written critique by the juror.

Luana attended the opening reception on November 3rd. She handed awards to the winners and commented on each painting that received an award.

Best of Show – "Moonrise" Kelly Welch
1st Place – "Sugar Cane Blues" Nancy Marshburn

2nd Place – "Straw into Gold" Susan M. Sinyai
3rd Place – "I Heard the Lord Call My Name...Julia" Suzanne Karnatz, PSA

Ella Maguire Memorial Award – "Country Lady" Irma P. Webb, PSA

Exceptional Merit – "Dawn's Gold" J Kay Gordon

Exceptional Merit – "Showring Special" Linda Medders-Jackson

Honorable Mention – "Sunny Flowers" Deborah Chase

Honorable Mention – "Yucca Blossom" Mary Robinson

Our deep appreciation to the Grace Centre for the use of their spectacular gallery. Special thanks to Dusty McNabb, Assistant Art Director at Grace, for (Continued next column.)

APS 2nd Annual Show (Continued)

her time and cheerful hard work.

Many APS members put in long hours on November 2nd and 3rd to help implement the crazy plan of the chairperson to "do it all in one day!" Special kudos to Mary Robinson, Awards Coordinator (and many other tasks!); Kate Thayer, Hanging Coordinator (a spectacular presentation!); Fran Greenberg, Reception Coordinator (thanks for the lovely settings and great food!); and Pete Gordon, who with his laptop computer and printer made all of the paperwork magically appear (of course, he couldn't go very far with his leg chained to the chair!). There were many others who helped with the hanging, publicity, photography, phone calls...and so much more...thanks to you all for your help!

Award sponsorship for this year's show enabled us to give some terrific awards to the winners. Please thank the following businesses next time you order from them: Great American Art Works; HK Holbein, Inc.; Savoire-Faire; Jerry's Artarama; Uneeda Enterprises, Inc.; Mount Vision Pastel Co.; Colorfin, LLC; Ampersand Art Supply; Jack Richeson & Co., Inc.; Cheap Joe's; and Askew-Taylor, Raleigh, NC. ...and Mary Robinson for the establishment of, and initial donation for, the "Ella Maguire Memorial Award." (See page 7.)

...so...who wants to help plan next year's show...?

Kay Gordon
Exhibition Chairperson

President Letter (Continued from pg 1.)

with others and making arrangements and taking time away from her painting. My challenge for you this year is to find time to volunteer for something so that we can continue to grow and remain successful.

Don't forget to let one of the board members or our newsletter chairman, Ed Hunting (ehunting@gmail.com), know if any address change occurs (Phone or e-mail) as soon as possible. We don't want you to miss out on any news.

Sincerely,
Karen Chambers
APS President

Exhibitions and Workshops

Exhibitions

Landscapes from the Age of Impressionism

October 21, 2007–January 13, 2008
North Carolina Museum of Art
Raleigh, North Carolina

Landscapes from the Age of Impressionism is an exhibition of forty paintings and includes some of the finest examples of mid- and late- 19th-century French and American landscapes. Ranging in date from the 1850s to the early 20th century, the works presented offer a broad survey of landscape painting as practiced by such leading French artists as Gustave Courbet, Pierre-Auguste Renoir, and Claude Monet and their most significant American counterparts, including Childe Hassam and John Singer Sargent.

Tickets may be purchased on-line at <http://ncartmuseum.org/buytickets.shtml>, by telephone at (919) 715-5923, or at the North Carolina Museum of Art box office located at 2110 Blue Ridge Road, Raleigh, NC (See directions at <http://ncartmuseum.org/visitor/location.shtml>.) For more information go to <http://www.ncartmuseum.org>.

Lines of Discovery: American Drawings

November 9, 2007—February 10, 2008
Asheville Art Museum
Appleby Foundation Gallery

This exhibition is drawn from the collection of The Columbus Museum, Columbus, Georgia, and includes seventy master drawings dating from the mid-19th century to the present. It offers visitors the opportunity to view images in a wide range of movements and styles including the Hudson River School, Abstract Expressionism, Conceptualism, Self-Taught and other contemporary approaches. This exhibition includes work by some of this country's best known and most important artists and offers the viewer the opportunity to explore the meaning of drawing.

The exhibition includes works by renowned 19th century artists William Merritt Chase, Thomas Cole and Winslow Homer, as well as a range of works by diverse 20th century artists such as Charles Burchfield, Isamu Noguchi and Andrew Wyeth. In addition, there are drawings by contemporary artists like Thornton Dial, Leslie Dill and Jerome Witkin.

Asheville Art Museum is located at 2 South Pack Square, Asheville, NC. For directions visit <http://www.ashevilleart.org/visit-11.html>. For more information call 828.253.3227, or visit <http://www.ashevilleart.org/home/index.php>.

Decatur Arts Alliance – Fine Arts Exhibition

Decatur, GA, outside Atlanta. May 20- June 1, 2008. Deadline Feb. 15, 2008. Monetary and

Purchase awards. Up to three images on a CD/slides for \$25/CD or \$30/slides. More info: decaturartsalliance.org or phone: 404-371-9583. (Continued next column)

Exhibitions (Continued)

Southeastern Pastel Society

International Juried Exhibition
June 12–August 8, 2008. Atlanta, GA.

Entry deadline: April 1, 2008.
One to three images on a CD only.
\$25 members and \$20/non-members.

Download prospectus at www.southeasternpastel.org/downloads/prospectus-08.pdf, or send Mikki Root Dillon your request and a #10 SASE to 662 Dorsey Circle, Lilburn GA 30047-4037. You can also obtain a prospectus from Karen Chambers at the next APS meeting, January 12 2008.

New North Carolina Pastel Society

The Piedmont Pastel Society (PPS), which is located in Charlotte, NC, had their first exhibition in October, 2007. They have a really nice newsletter, and appear to be enjoying a great first year of success! They hold their meetings at the Jerald Melberg Gallery in Charlotte, and their exhibitions are held at Queens University of Charlotte.

The next Piedmont Pastel Society Exhibition and Workshop is scheduled for Sunday November 9, 2008, at Queens University Max Jackson Gallery. The Awards Ceremony/ Reception is set at 3pm-5pm. Workshop dates are November 10, 11, and 12. Maggie Price is the exhibition Juror and workshop instructor. All details for entry will be in the PPS, "Pastel Pallet" January Newsletter. For more information, contact Nancy Marshburn pabama@med.unc.edu, or you can talk with Karen Chambers who will have a copy of the PPS Fall 2007 newsletter at the January APS meeting.

Workshops/Classes

Color and Value Strategies

Attend a 2-Day Workshop with Susan Webb Tregay NWS, author of the book and DVD "Master Disaster".

Susan & students will analyze eight color strategies as a direct and simple way to evoke content and moods. Students will start a "flip book" of eight simple color sketches or sample paintings found in art magazines.

Value strategies are the design backbone of a strong painting. Because of their success, some have been used and reused throughout art history.

This course will supply artists with two dozen strategies. We will add these to your "flip book" and begin finding examples of each strategy.

We will also be making Stone Soup for lunch! Everyone is asked to bring a serving of something (a can of something, a potato or two cut up or such) to throw in our soup pot. Let's do lunch!

Workshop dates and time are January 17 and 24, 2008, 10am-4pm, at the Conn-Artist (Continued on page 4, column 1.)

News and Happenings

Workshops/Classes (Continued from page 3.)

Studios, located upstairs at 443 N. Main Street, Hendersonville, NC.

See website: www.Conn-Artist.com for supply list.
Call 329-2918

Pastel Art Demonstration

Karen Chambers will present a pastel demo, for the Art League of Henderson County, from 1pm-4pm, February 20, 2008. The demonstration will take place at the First Congregationl Church, located at Fifth Street and White Pine in, Hendersonville NC.

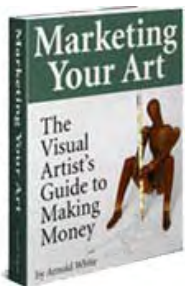
Karen also teaches on-going half-day pastel classes, Mondays 9:30am-12:30pm. at the Conn-Artist Studio, located upstairs on the SW corner at Fifth and Main in Hendersonville, NC. ClsSES begin Monday, January 7. Fee: \$30.

She will also be teaching pastel painting at the Swannanoa Valley Fine Art League Studio at 999 Old Highway 70 in Black Mountain. These classes will start on Wednesday, January 2 and go from 9:30am-3:30pm. Fee: \$30/half day, \$60/full day. For more info, contact Karen at 828/665-8538 or e-mail her at karenpaints@hotmail.com.

Live Model Open Studio

Swannanoa Valley Fine Art League

Fran Greenberg runs an open studio portrait session at the Swannanoa Art League Studio on Monday from 1:00 to 4:00. We have one model, one pose and short breaks every 20 minutes. It's free except we split the model's fee. She also runs the figure drawing session on Friday from 10:00 to 1:00. There are multiple poses for this session. For more information please contact Frances Greenberg 225-9524 francesgreenberg@netscape.net or see the Swanawova Valley Fine Art League web site at www.svfal.org.



**Get a Free
"Marketing Your Art"
eBook
Art Websites by Webtoady.com**

News About Members

Karen Chambers will be the Exhibiting Member for the ALHC Gallery at the Opportunity House, in Hendersonville, NC for most of February.

Kate Thayer has two pastel paintings in the Bascom-Louise 2007 Juried Exhibition in Highlands, NC

Nancy Clauson was chosen as "Artist of the Month" for November at the Women's Club of Raleigh, NC.

New APS Members

Deborah Chase, Hendersonville, NC

Leigh Ann Condie, Asheville, NC

Karen Fields, Greenville, SC

Faith Charly O. Johnsen, Sheridan, WY

Lorraine (Larrie) King, Candler, NC

Patricia Michael, Fairview, NC

Marnie Mikell, Asheville, NC

Carolyn Molder, Marble, NC

Li Newton, Asheville, NC

Donna Parker, Lake Toxaway, NC

Victoria Pilat, Weaverville, NC

Danielle Rogers, Black Mountain, NC

Everett Schmidt, Brevard, NC

Marie Turowski, Black Mountain, NC

Kay Withington, Asheville, NC

Appalachian Pastel Society

Board Meeting Minutes

November 10, 2007

Karen called the Board meeting to order at 9:15 on Saturday November 10, 2007.

We were told that for next year we were in need of a Vice President, Exhibition Chair and a Workshop chair. Both the later should work together to perhaps coordinate the juror of the show with a workshop by him/her.

Next year our show will be at the Art Council building in Henderson. We are thinking of having people submit slides or CDs. This would make it easier on the juror as well as those entering our show, especially those entering from out of state. The board was in agreement of doing this. We will need a person to review the slides to make sure they are correctly done. That person will need an assistant as the slides will need to be put on a caracol as the juror wishes it.

Mary Robinson has taken photos of our show to submit to the arboretum.

We have added 8 new members.

Suzie Karnatz wrote up notes on how to improve our painting techniques for future shows. If anyone is interested in a copy please contact her.

Karen thanked everyone who gave of their time to help with our show.

Nancy will need to write thank you notes to Pete Gordon for all of the computer work before the show opening and the Harpist.

We discussed cut off dates for our dues as in how late in the APS year a new person can join and have it count toward the following year. We decided July and August. Our year starts in Sept.

Karen and Robbins will be meeting to discuss the membership and work out any bugs.

Robbins has asked that all mail be sent to her address as it would be easier for her to get it. This would do away with the P.O. Box and that expense. Nancy so moved and Beverly seconded the motion.

There was some discrepancy about cash taken in at the time of the show, but we were able to find where it went. Robbins recommended the next year she collect all monies for show and membership. We took in \$825 in membership dues. The monies taken in for the show were \$615. our expenses were \$593. We made \$22.00 profit.

New business: Nancy brought up the need to find someone to to download and send our newsletter to non-computer people. (Continued next column)

Board Meeting Minutes (Continued)

We discussed possible jurors for our next show. Kevin Beck is one to be considered. Suzie said she had some names. Mary volunteered to find a juror for the show. She also said she would find out the cost up front.

Beverly Keyes reported on her programs for the first three meetings of the year. In January we are having Paul de Marrais. He makes his own pastels and papers. He is giving a demonstration.

In March Kelly Welsh is going to demonstrate her winning technique.

In May Denise has recommended Wendy Outland. Wendy does charge a \$100.00 Fee.

The board meeting adjourned for the regular meeting.

Respectfully submitted,
Nancy Clausen - APS Secretary

Appalachian Pastel Society

General Meeting Minutes

November 10, 2007

Our meeting began at 10:00 with Beverly Keyes giving a report on our programs. We have programs through March. And since everyone was interested in having Wendy Outland, we hope to have her come and speak to us in May. If anyone has any suggestions please either email Karen or Beverly or call them.

Karen gave the treasurer's report as having \$1349 last month.

It was reported that we need someone to step forward for the job of Vice President. Their primary job would be to take care of membership which is a fairly easy job.

The board has voted to have the P.O. Box dissolved. All mail will be sent to Robbin's home.

For the upcoming show in 2008, we have needs. We need an exhibition chair. We need someone to do the publicity and coordinate the slides coming in for the show. We also need a workshop chairman. All these jobs take more than one person to make things run smoothly and not be a burden on any one person and are fun to do with a committee.

Mary has volunteered to find a juror for next year's show. She will be happy to entertain any suggestions.

We are still going to showcase one or two artists who are members in our newsletter. Please send a short bio and photo of your work to Ed Hunting.

For anyone who would like a critique of our show, we have them available. Luana took a lot of time to tell us her impressions of our work. (Continued on page 6, column 1.)

General Meeting Minutes

(Continued from page 5.)

Membership forms are available.

Please also pick up a packet of invitations to send or give to other people.

Until we need a larger space we will continue to meet at the Swannanoa Valley Art League building. We may need later to reconsider the Black Mountain Library. For anyone who may need to double check on the location please call Karen.

Karen read the statement from Kay Gordon on how the decision was made to jury our show. The bottom line is that we should be in competition with ourselves not with the other artists. We also hope that any judges in the future will give us a critique of our work.

Denise is taking care of all post publicity for our show.

Leigh and Mary took photos of the show for our website.

There is a call for artists for the show in Winston Salem. This is a national show.

We are in need of someone making sure that those who don't have a computer get the newsletter. Marnie Michail will send copies out to our non computer members.

Karen introduced our visitors Deborah Chase, Cheryl Keever and Steve.

Kathryn Wilson was introduced. She demonstrated how she uses oil pastels. She also uses soft pastels.

Several observations from the demo. Kathryn uses Mt. Vision watercolors as an underpainting. The shapers she used were passed around. She uses them to sometimes push the color around on her support. She thinks a set of Senneilier oil pastels cost \$96.00.

Respectfully Submitted,
Nancy Clausen, Secretary

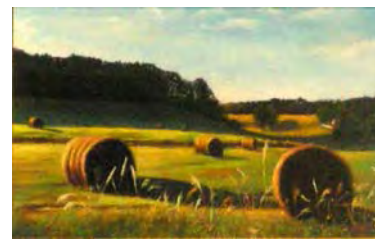
APS Second Annual Art Exhibit Award Winner Paintings



Best of Show – “Moonrise” Kelly Welch



1st Place – “Sugar Cane Blues”
Nancy Marshburn



2nd Place – “Straw into Gold”
Susan M. Sinyai



3rd Place
“I Heard the Lord Call My Name
Julia” Suzanne Karnatz, PSA



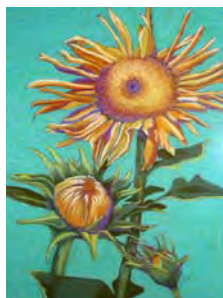
Ella Maguire Memorial Award
“Country Lady”
Irma P. Webb, PSA



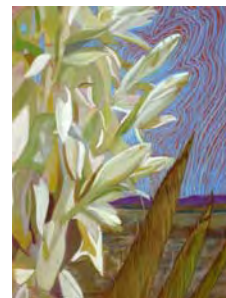
Exceptional Merit – “Showring Special”
Linda Medders-Jackson



Exceptional Merit – “Dawn's Gold”
J Kay Gordon



Honorable Mention – “Sunny Flowers”
Deborah Chase



Honorable Mention – “Yucca Blossom”
Mary Robinson

Ella Maguire Memorial Award

Mary Robinson instituted the Appalachian Pastel Society Ella Maguire Memorial Award this last November, in honor of the late Ella Maguire.

Ella Maguire attended the Student Art League in New York City, and took many classes in watercolor, acrylic and pastel painting. She and Mary Robinson met at a pastel class, taught by Karen Chamber, at AB Tech. Ella and Mary became good friends, and Ella became part of Mary's family. They enjoyed Thanksgivings and Christmases together, looked forward to the change of seasons, took art classes together and went to life drawing classes at SVFAL. Ella loved to go driving around with Mary, looking at houses when Mary and her husband were ready to move from their rental property to a home of their own. Ella loved adventure and was up for anything.

When Ella had to move from Asheville to Ohio, there was a big empty space in Mary's life. Ella and Mary kept in touch and Mary visited with her several times after Ella's move. In October, Mary received word of Ella's death and decided to honor Ella's love of art with a perpetual memorial award of \$100.00. The award is a special honor given at the APS annual Juried Art Exhibition.

Congratulations to the first winner of the Ella Maguire Memorial Award, Irma Webb for her painting "Country Lady".



"Country Lady" - Irma Webb

Appalachian Pastel Society Membership Application Form

Name _____

Address _____

City _____ State _____ Zip _____

Telephone _____ E-Mail _____

Artist _____ / Art Supporter _____

Areas of Interest

Committee Interests:

Exhibitions___ Programs___ Hospitality___ Telephone___

Newsletter___ Directory___ Clerical___ Other___

Awards / Experience

Please include a check with your application, made payable to the Appalachian Pastel Society in the amount of \$25 for one year membership (Sept.-Sept.) and mail to:

Appalachian Pastel Society
5 Dunwoody Court
Arden, NC 28704