



Letter from the President

As the holiday season ends, the Appalachian Pastel Society is ready for an exciting 2009. With the state of the economy, I think it is more important than ever to bring art into our lives, not only to enrich us but the public as well. We have filled all of our positions for the year, and we hope to make our organization a group that benefits everyone.

Following the completion of our APS Juried Exhibition, we can focus on other opportunities for our members. We are putting together the final details of the APS non-juried "Members Only" show at Kevin Beck's gallery in Boone, NC scheduled for March 2 through March 22. Space may be limited to about 40 pastels, so start painting to get ready for this event. We will still hold our regular meetings, including a short business meeting and a program every other month. We are also considering the idea of "paint-ins" at our same location, the WNC Agriculture Center, on opposing months to our meeting, so that we can help each other learn all of the different aspects of the pastel medium. This would bridge the gap for those of you who happen to miss a regular meeting, and provide an opportunity for members to get to know each other.

If you have any news on competitions, prizes members have won, or anything you would like to share with the group please send these to our newsletter editor, Ed Hunting, at ehunting@gmail.com. If you can, send these as MS word and jpegs.

We hope to see you at the next meeting on January 10, from 10 a.m.-12 p.m., at the Youth building at the WNC Agriculture Center. Our speaker will be pastel artist Karen Margulis, from Atlanta, GA. She will do a demonstration on winter landscape. For those who are interested, for a nominal fee she will be giving a workshop on Color in the Winter Landscape after a lunch break from 1-4 p.m. In the meantime, keep those pastels moving.

Your President,
Beverly Kies

In This Issue...

- Page 2...** **Meetings
Events**
- Page 3...** **Member News**
- Page 4...** **Exhibitions
to See
Exhibitions
to Show**
- Page 6...** **Workshops**
- Page 7...** **APS Board and
General Meeting
Minutes**
- Page 8...** **APS Member
Application**

ATTENTION!

**The January APS meeting will be held at the
Youth Building at the WNC Agriculture Center**
For location and directions, see "APS Meeting" (Col. 1 page 3).

Board of Directors

Officers

President - Beverly Kies
Vice President - Pam Potter
Secretary - Colleen Hester
Treasurer - Susan Sinyai

Committee Chairpersons

Membership:
Kay Gordon

Directory:
Pam Potter

Exhibitions:
Karen Chambers
Colleen Hester

Finance:
Gina DeGrechie

Programs:
Karen Wylie

Publicity:
Marnie Mikell

Telephone:
Pam Riley

Workshops:
Karen Wylie

Exhibitions and Newsletter Submission Dates

If you know of any exhibitions coming up, especially those within 3-4 hours of Asheville, let us know. Please allow enough lead-time (at least a month) for publication.

Meetings and Events

APS Meeting

We will hold the APS general meeting Saturday, January 10, 2009, from 10 am - 12 noon in the Youth Building at the WNC Agriculture Center, located at 1301 Fanning Bridge Rd., Fletcher NC.

Our January Program speaker, Karen Margulis from Atlanta, Georgia will provide an overview and demonstration on 'Color in the Winter Landscape.' After an hour break for lunch and setting up our easels, Karen will continue her 'Winter Landscape' topic by facilitating an afternoon workshop from 1:00-4:00. The workshop fee is \$45.00. Feel free to bring a bag lunch or order out with the group for a box lunch from a local restaurant. Refreshments will be provided.

Here is what Karen has to say about her demo:

"Compared to other seasons, winter may appear to lack much color or interest. I have found the colors of the winter landscape to be subtle and very beautiful, especially when snow is present. These colors are worth seeking out and I will share ways to see and use color in your winter landscape paintings. Since painting snow has its own unique challenges, I will paint a demo of a snow scene and share some tips for painting the colors we find in snow. I hope to encourage everyone to embrace the winter landscape and all of the colorful possibilities winter presents."

Here is how Karen describes what we will learn during our afternoon workshop:

"I am excited to offer this workshop on painting the colors in the winter landscape. I will expand on the information presented at the morning program and offer demonstrations, exercises and individual help at the easel during the three-hour workshop. Our emphasis for this workshop is to learn ways of seeing color in the winter landscape and to choose the pastels to help paint these colors. There will be special emphasis on painting snow. We will discover that snow is not really white! We will also explore how the principles of light affect the color of snow. I will demonstrate these principles using a turpenoid wash underpainting on pastelbord. There will then be plenty of time for you to apply these ideas and technique to your own painting. I hope you will consider joining me for this workshop!"

Karen grew up in South Florida and spent summers in the Mountains of Western North Carolina. Both places have fostered her love of the mountains and the seashore, which she expresses in her paintings.

Pastels, with their vibrant, immediate color suit Karen's style perfectly! She likes to finish a painting in (Continued next column)

one sitting so that she can capture that flash of inspiration, which attracted her to the subject. Her pastel paintings include Marshes & Low Country Landscapes, Florals & Wildflower series, Seashore, Cats & Dogs, Birds & Nests, Shells, Rocks & Feathers, Southwest Landscapes, Southeast Landscapes, Food series, People, Dragonflies & Butterflies, Cityscapes, New England Landscapes, and more.

Her paintings hang in private and corporate collections around the world. She has had work juried into regional and international shows, receiving positive reviews from her peers winning many awards.

Karen has a Bachelor of Arts degree from the University of Florida and a Masters Degree in Art Education from Florida Atlantic University. She is a member of the Southeastern Pastel Society, Atlanta Artist Center, Southern Plein Air Painters and the Georgia Outdoor Painters. She maintains a studio in Marietta, Georgia and is represented by David's Fine Art in Murphy, North Carolina, and Wrapsody in Blue, in Blue Ridge, GA. She also sells paintings on eBay at <http://myworld.ebay.com/kemstudio>.

We hope you will join us for a fun day of learning and painting. You can download a complete .pdf file that includes Karen's supply list and topic outline for the afternoon workshop at <http://docs.google.com/gview?a=v&attid=0.1&thid=11e3b2254fd5bd4f>, or from the APS web site at http://appalachian-pastel-society.org/karen_margulis_workshop.pdf. You can view Karen's art at her web site: <http://www.karenmargulis.com>, and at her blog: <http://www.kemstudios.blogspot.com>. She also posts new pastel painting .jpgs every day as a member of the 'Daily Painters' on the web at <http://www.dailypainters.com/search.php?search=Karen+Margulis>.

How To Register For The Workshop

Please pre-register by sending a check in the amount of \$45.00 to:

Karen Wylie
APS Program Chairperson
179 Meadow View Road
Spruce Pine NC 28777

For questions, call or email Karen Wylie at (828) 765-6001 or karen@soapshed.com

For directions to
WNC Agriculture Center, see Column 1 page 3.

IAPS Convention

The IAPS 2009 Convention is being held in Albuquerque, NM, May 28-31, 2009. Info/registration: www.pastelinternational.com

Meetings and Events/Member News

Directions to WNC Agriculture Center

From Asheville:

Take I-26 East to Exit 40. Make a right turn off the ramp on to Airport Road, 280. Turn left at the first stop light past the Asheville Airport on to Fanning Bridge Road.

The main entrance, Gate 1, is on the right.

From Hendersonville:

Take I-26 West to Exit 40. Make a left turn off the ramp on to Airport Road, 280. Turn left at the first stop light past the Asheville Airport on to Fanning Bridge Road. The main entrance, Gate 1, is on the right.

WNC Agriculture Youth Center Location Map



Member News

APS Membership Renewal Time

The APS membership year started on September 1, 2008. Have you renewed? If you're not sure, or if you have other membership concerns, contact me.

We have an exciting year in store for 2009. Currently our plans include two member shows and two major workshops. Our member meetings are held the second Saturday every other month, starting with January. Programs at the meetings include guest demonstrations and member participation activities. The January meeting will have a free morning demo by Atlanta artist and teacher, Karen Margulis, followed by an afternoon workshop at a cost of only \$45.

In addition to the member meetings, APS is just starting (Continued next column)

"paint-ins" on the second Saturday of the months not having regular meetings (so the first will be in February). The intention of these get-togethers is to paint together with other pastelists. Often those gatherings will have a brief informal demo or topic of discussion.

Don't miss this exciting year. Send your \$25 check with the Membership Application located on page ?? of this newsletter.

For questions or comments, contact:

Kay Gordon
APS Membership Chair
kgordon@main.nc.us
828.649.3363

What do you do when it's too cold to Paint Out?

PAINT-IN!!

February 14th & April 11th, 2009

Join us on the second Saturdays of our off-months (the months we don't have meetings) for a day of fun and painting at the WNC Agricultural Center Youth Building, 10:00 am - 4:00 pm.

Bring your easel, your pastels, and photos or ideas of what you want to paint during the day. There will be no formal instructor during our Paint-In days, no central subject or model. Each artist will work on his or her own individual project. The opportunity for critiques will be offered at the end of every Paint-In day, and you can choose to participate by asking for feedback - or not. Stay all day, or as long as you can. Bring a bag lunch or order a box lunch from one of the local restaurants. Coffee, soft drinks, and water will be provided.

Feb. 14 Paint-In Special Feature

Photographing Your Art & Preparing JPGs & CDs for Art Show Entries

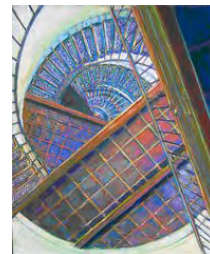
Do you need help taking photos of your artwork? What about preparing jpgs to submit to our show and others? Kay Gordon and other members familiar with these topics will be on hand to guide you through this process. Feel free to bring your laptop, camera and artwork if you'd like some help. Be sure to have some photo software (Continued next column)

on your computer or download Picasa from Google before you come (<http://picasa.google.com/>)

Hope to see you there!
Karen Wylie
APS Programs Chair
karen@soapshed.com
828.765.6001

Congratulations!

Li Newton has won an honorable mention in the Abstract/Contemporary category of the Pastel Journal "Best of 2008" art contest. The Pastel Journal will publish Li's artwork in its April 2009 issue.



"Dizzy" Li Newton

- SPECIAL NOTICE -

"Members Only" Non-Judged Show Exhibit Date and Entry Deadline Change

APS has rescheduled the "Members Only" Non-Judged Show to March 2 - 23, 2009.

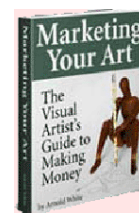
The show will be at Kevin Beck's Blowing Rock Gallery (Upstairs), at 1098 Martin Street in Blowing Rock, N.C.

Members may bring their paintings to the gallery themselves, or if they cannot or do not wish to drive to Blowing Rock to make a delivery, they can participate in a consolidated delivery of the paintings.

So that we can make tags, we will need the names of the paintings in advance.

A tentative date for consolidation delivery is set for Feb. 28, 2008. We will discuss the entry deadline and actual consolidation delivery date at the January 10, 2009 APS meeting. Painting pick-up date is March 24, 2008.

For more information, contact...
Karen Chambers at 828-665-8538, E-mail:
karenpaints@hotmail.com, Nancy Clausen: 828-686-5003, E-mail: nancy@clausen.net



Get a Free
"Marketing Your Art"
eBook
ArtWebsites.com
Webtoady.com

Exhibitions

Exhibitions to See

Maryland Pastel Society Exhibition

- December 31, 2008-January 27, 2009
- Opening Reception: Sunday, January 11, 2009, 1:30 to 3:30pm
- Dennis & Phillip Ratner Museum, 10001 Old Georgetown Road, Bethesda, MD
- See a wonderful collection of pastel paintings by members of the Maryland Pastel Society

For more information see: <http://www.marylandpastelsociety.com/index.php?page=about&family=events&category=02--Exhibitions&display=250>

Southwest Florida Pastel Society Exhibition

- March 6-30, 2009
- Opening Reception: March 6, 6pm-8pm
- Enjoy a fine collection of pastel paintings. See the amazing range of this medium as members of the Southwest Florida Pastel Society offer their annual exhibition.

For more information see: <http://artcenterbonita.org/exhibitions.html> or call (239) 495-8989

Online Exhibitions to See

IAPS 11th Juried Exhibition Winners

IAPS website: www.pastelinternational.com/COMPETITIONS/eleventh/eleventhjuried.html

IAPS Twelfth Juried Exhibition 2008 Web Show

IAPS website: <http://www.pastelinternational.com/COMPETITIONS/twelfth/twelfthjuried.html>

Exhibitions to Show

Ico Gallery Open Call For Artists

Tribeca, New York City, New York

Entry Deadline: December 30, 2008

Exhibit Dates: January 1-December 30, 2009

Sponsor: Ico Gallery

Venue: Ico Gallery, 27 North Moore St., New York, NY

Awards: Winning submissions will be invited to exhibit.

Jurors: Dalia Chako, Skylor Brummans

Eligibility: Artists interested in expressing their work should: 1) Prepare 5-10 Jpeg files (smaller than 1 MB each and properly titled) or provide a website where we can review your work. 2) Include a short biography or resume, as well as, an artist statement/goals. E-mail information to info@icogallery.com See our website for more information.

Fees: Free

Commission: 50%

E-mail: Skylor Brummans info@icogallery.com

Phone: 212-966-3897

Website: www.icogallery.com

(Continued next column)

Exhibitions to Show

38th annual Lake Wales Art Show

Lake Wales, Florida

Entry Deadline: January 5, 2009

Exhibit Dates: March 28-29, 2009

Venue: Shores of Lake Wales

Awards: \$25,000

Juror: Margaret Miller

Eligibility: Participation is limited to artists showing their own original works of art created in the last three years. No kits, manufactured items, T-shirts and other forms of manufactured clothing, molds, patterns or pre-determined art will be accepted.

Fees: Jury Fee: \$15.00 non-refundable fee. Space Fee: \$135.00 (if accepted)

Commission: none

E-mail: Martha lwadmin@verizon.net

Phone: 863-676-8426

Website: <http://www.lakewalesartscenter.org>

Memphis/Germantown Art League

Annual National Juried Exhibition

Germantown, Tennessee

Entry Deadline: January 8, 2009

Exhibit Dates: April 21-May 14, 2009

Venue: Germantown Performing Arts Centre, 1801 Exeter Rd, Germantown, TN

Awards: Best of Show \$1200; 2nd - \$750; 3rd - \$500; 2 honorable mention - \$250; up to 4 Judge's Recognition - \$150 each

Juror: Jan Sitts

Eligibility: Artists within the U.S., 18 yrs and over. See prospectus at: www.mgal.org

Fees: MGAL Members: 1-2 entries \$25.00; Non-members: 1-2 entries \$30.00, 3 entries \$35.00

Commission: 20%

Send SASE to: Memphis/Germantown Art League, MGAL National Juried Exhibition, 481 N Ericson, Cordova, TN 38018

E-mail: Deb Boardman deb@mollyinc.com

Phone: 901.378.7542

Website: www.mgal.org

Prospectus: www.mgal.org

Drawing From Perception VI

Dayton, Ohio

Entry Deadline: January 9, 2009

Exhibit Dates: March 31 - May 3, 2009

Sponsor: Robert and Elaine Stein Galleries

Venue: Wright State University

Awards: Juror Award

Juror: Ruth Miller

Eligibility: Artists living in the United States 18 years of age or older. Work must be original and completed in the past two years. Current faculty, staff, and students of Wright State University are ineligible. Digital entries preferred, slides accepted.

Fees: \$25 for up to 3 images

Send SASE to: A128 Creative Arts Center, (Continued on page 5)

Exhibitions

Exhibitions to Show

Drawing From Perception VI (Continued from page 4)

3640 Colonel Glenn Hwy, Dayton OH 45435

E-mail: Tess Cortes artgalleries@wright.edu

Phone: 937-775-2978

Website: www.wright.edu/artgalleries/dfpvi.html

Prospectus: www.wright.edu/artgalleries/dfpvi.html

Embracing Our Differences 6th Annual Outdoor Art Exhibit

Sarasota, Florida

Entry Deadline: January 12, 2009

Exhibit Dates: April and May 2009

Title: Call to Artists - Cash Awards

Sponsor: Embracing Our Differences

Venue: Island Park on Sarasota's bayfront

Awards: \$3,000 in cash awards

Jurors: Final selections will be made by a 3-judge panel of professional artists, curators and art professionals.

Eligibility: Artists, photographers, professionals, amateurs, teachers and students. Final selections will be chosen based on artistic excellence in reflection of the theme Embracing Our Differences. The artwork will also be evaluated on how effectively it will read outdoors when enlarged to billboard size - 16 feet wide by 12 1/2 feet high. Artists are encouraged to use bold saturated colors and strong lines.

Fees: None

E-mail: Michael Shelton michaeljshelton@comcast.net

Phone: 941-928-0567

Website: www.EmbracingOurDifferences.org

Prospectus: www.embracingourdifferences.org/pdfs/2009artists.pdf

IAPS Thirteenth Juried Exhibition

Santa Fe, NM

Entry Deadline: March 19, 2009

Exhibit Dates: June 4-8, 2009

Opening Reception: Friday, June 5, 2009, 5-7 p.m.

Sponsor: International Association of Pastel Societies

Venue: Ventana Fine Art Gallery
400 Canyon Road
Santa Fe, New Mexico

Awards: Accepted artists receive IAPS Master Circle* points.

Juror of selection: Doug Dawson

Juror of awards: Albert Handell

Eligibility: Any artist of an IAPS member organization. Original dry pastel only (No oil pastels). Nudes will be considered for acceptance. Works must be original, completed in the last two years and not shown in any previous IAPS exhibitions. Works must not exceed 30" x 30" framed.

Fees: \$40 the first slide and \$10.00 for each additional slide. Up to 5 slides may be submitted by an individual artist.

Commission: 50%

Mail Entry to: Brenda Mattson
IAPS Exhibition Chairperson

(Continued next column)

Exhibitions to Show

6931 Windwater Ct., Muskegon, MI 49444

Website: <http://www.pastelinternational.com/COMPETITIONS/competitions-exhibitions.html>

Prospectus: <http://www.pastelinternational.com/COMPETITIONS/iaps-13th-exhib.pdf>

Westmoreland Art Nationals

Greensburg, Pennsylvania

Entry Deadline: March 31, 2009

Exhibit Dates: May 30-June 14 and July 2-5, 2009

Sponsor: Westmoreland Arts & Heritage Festival

Venue: Westmoreland Community College & Twin Lakes Park

Awards: over \$5000 in awards

Juror: TBD

Eligibility: Open to all artists 18 yrs. or older, 2-dimensional, 3-dimensional and photography executed within three years of submission. Works previously accepted by WAN not eligible. Further details included with application form.

Fees: \$35 for up to 4 entries

Commission: 35%

Send SASE to: WAHF, 252 Twin Lakes Road, Latrobe, PA 15650

E-mail: Stacey Rosa info@artsandheritage.com

Phone: 724-834-7474

Website: www.ArtsAndHeritage.com

Prospectus: www.ArtsAndHeritage.com

The Artist's Magazine 26th Annual Art Competition

Entry Deadline: May 1, 2009

More than \$25,000 in Cash Prizes!

5 First Place Awards: **\$2,500 each**

5 Second Place Awards: **\$1,250 each**

5 Third Place Awards: **\$750 each**

15 Honorable Mentions: **\$100 each**

Winners will be featured and finalists' names will be published in the December 2009 issue of *The Artist's Magazine*. 13 finalists will be featured in *The Artist's Magazine's* 2009 Calendar. In addition, nine finalists will be featured in the "Competition Spotlight" in *The Artist's Magazine*, 12 finalists will be featured as "Artist of the Month" on our website, and all winners and finalists will receive a certificate suitable for framing.

Plus, the Student/Beginner Division (for artists age 16 or over who (1) have been enrolled in a post-high school art program for no more than four years **OR** (2) have pursued art on their own or in workshops/lessons for no more than four years):

5 First Place Awards: \$150 each

5 Second Place Awards: \$75 each

5 Third Place Awards: \$50 each

Award Winners in the Student/Beginner division will be featured in the January/February 2010 issue of *The Artist's Magazine*.

PLUS all Award Winners and Honorable Mentions receive a 1-year subscription to *The Artist's Magazine*.

5 Categories: Portraits/Figures, Still Life/Floral,

Landscape/Interior, Abstract/Experimental, and Animal/Wildlife.

See more at: <http://www.artistsnetwork.com/annualcompetition>

(Continued on page 5)

Workshops/Classes

Exhibitions to Show Online

The Matchup Prize

Entry Deadline: December 31, 2008

Exhibit Dates: Yearlong

Sponsor: Matchup

Venue: International

Awards: \$500 cash

Eligibility: All original fine art and craftwork. Apply and send digital images online.

Fees: None

Commission: Applies only to works sold through our site.

E-mail: J. Hoyt info@matchup.com

Website: www.matchup.com

Prospectus: www.matchup.com/main/faq/15#15 Scroll to "the Matchup Prize"

ADVERTISEMENT

Multi-Brand Color Chart for Pastels Now Available

A great new resource for pastel artists, the *Multi-Brand Color Chart for Pastels*, is now available. This unique book is the ultimate buyers guide: 5,700 sticks from 24 different brands have been analyzed using scientific methods and then integrated into a single color chart organized by hue, chroma and value.

The book's full color printed pages and easy-to-use format provide a harmonized grouping of all the pastels of similar appearance across different brands. It allows the reader to easily identify the pastels that fill the gaps in their collections.

Here are just a few of the comments we've received so far:

"I am amazed at the brilliant new book, *Multi-Brand Color Chart for Pastels*...

It will be of immense help to every pastel artist.

Daniel E. Greene, N.A.

"Excellent work."

Bill Creevy, PSA Hall of Fame Honoree

"I highly recommend it for any artist who is serious about mastering pastels."

Alan Flattman, PSA Hall of Fame Honoree

"It deserves a place in the library of every serious pastel artist and I'm very happy to recommend it."

Katherine Tyrrell, author of the "Making a Mark" blog

"The time, energy and dedication given to this complete this book is awe-inspiring. I am convinced that this book is a great guide that will make life for the pastel artist lot easier and also much cheaper and I couldn't recommend it highly enough to do it justice."

Anneke Newman

"It is everything I had hoped it would be. I knew I had gaps in my collection, now I know where they are. Thanks for having a great idea, and a great product."

Don Rantz

The *Multi-Brand Color Chart* is just \$39.99 (plus s/h), and is available exclusively from our website, www.huechroval.com. It is in stock and available for immediate shipping,

The *Multi-Brand Color Chart for Pastels*: Understand your options, find the colors you want, and make your money go farther.

Huechroval Corporation

1807 2nd St, Unit 62 Santa Fe, NM 87505

Workshops/Classes

SVFAL Live Model Open Studio

Swannanoa Art League Studio, Mondays, 1:00-4:00pm. One model, one pose, and short breaks every 20 minutes. Figure drawing sessions, Fridays 10:00am-1:00pm. Multiple poses. Fran Greenberg at: Tel 225-9524, E-mail francesgreenberg@netscape.net See SVFAL web site www.svfal.org

"Color in the Winter Landscape" Workshop

(See Meetings and Events, APS Meeting, page 2)

Sally Strand Workshop - "The Color of Light"

Date: February 9 - 13, 2009

Location: Quinlan Visual Arts Center, Gainesville, GA

Contact: Debra Nadelhoffer

debuster@bellsouth.net

Phone: 770-887-8877

Doug Jarvis

Phone: 828-696-3188

APS Member PAINT-IN

Special Topic: Photographing your art, preparing JPGs, and preparing CDs for art show entries

Date: February 14, 2009 - All Day 10:00 am - 4:00 pm

Location: WNC Agriculture Center Youth Building

"How to get a Plein Air Look to Your Pastel Painting While Working in Your Studio"

Presenter: Jack Pardue, PSA from Baltimore, MD

<http://www.parduestudio.com>

Date: March 14, 2009 10:00 am - Noon (APS Meeting and Program)

Location: WNC Agriculture Center Youth Building

APS Member PAINT-IN

Special Topic: To Be Announced

Date: April 11, 2009 - All Day 10:00 am - 4:00 pm

Location: WNC Agriculture Center Youth Building

Karen Chambers - Five Day Plein Air Workshop

Date: April 12-17, 2009 (April 12 is a "Meet & Greet" evening)

Location: Western Buncombe County

Cost: \$250

Contact: Karen Chambers

Tel: 828-665-8538

E-mail: karenpaints@hotmail.com

"Exciting Color and Color Harmony - A Mixed Media Technique for Pastel"

Presenter: Paul deMarras, Kingsport, TN

<http://www.pauldemarras.com>

Date: May 9, 2009 10:00 am - Noon (APS Meeting and Program)

Pastel Store: 12:00-1:30 (Paul promises to bring plenty of his handmade pastels!)

Workshop: "Mixed Media Innovations" with Paul deMarras - 1:30-4:30 pm Fee: \$45.00 (Enrollment limited to 8 participants)

Location: WNC Agriculture Center Youth Building

Deborah Squier - Three Day Pastel Workshop

Date: May 28-30, 2009

Cost: Three days (Thurs.-Fri.-Sat.) \$250 Includes Saturday paint-out with instruction at Lake Lure. Two days (Thurs.-Fri.) \$200.

Deposit: \$50, due Apr. 1 Bal due May 1 All

Contact: Denise Geiger 828-669-5947

**Appalachian Pastel Society
Board Meeting Minutes
November 8, 2008**

Beverly Kies brought the meeting to order.

The first order of business was the membership list. It was noted that we needed to have a larger format. It was difficult to read it as it is now being done.

It was also noted that when we get any new members we need to make sure that they get on our email list in a timely manner. One new member was not aware of our activities because he wasn't put on the list. We also felt that we should have welcoming form letters sent to the new members. After each meeting we need to see who comes back or follow up.

We need to follow up on who has not renewed their membership.

Ed needs to have updates of new members in a timely manner.

During the meeting Nancy will report on the non-juried Kevin Beck show in Blowing Rock. The show will run from April 14th until May 7th. They would like 40 paintings. We felt that we could meet on a particular day and consolidate painting deliveries so not everyone would have to go. The gallery charges 35% commission. We are going to ask members to who are participating to give \$10.00 to help with the advertising fee.

We then did a recap of the recent show's numbers. We still need to pay Mary for the ribbons. That will be \$66.67, also Gwen needs to submit a receipt to be paid. There will be some expense for shipping paintings back to artists. So far it looks as if we have \$2,410 in the bank. We will discuss how much the exhibition/workshop made at the planning meeting on Tuesday.

Fee to IAPS needs to be paid.

We need to send out hard copies of our news letter to people without e mails.

Karen and I will start looking for our 2010 national show.

Karen will talk about our juried show in 2009 during the general meeting.

We felt we should call the person doing the program before our meetings to give them a gentle reminder.

**Appalachian Pastel Society
General Meeting Minutes
November 8, 2008**

The meeting was called to order by Beverly Kies our new president at 10:00

New people visiting today were:

Marion Sinks from Black Mountain. She does oils and pastels.

Bill Georger from Asheville. He does pastels and oils.

Benedette St Pierre (Bill's wife) does pastels.

Ina from Lake Lure

Marion Moore from Hendersonville.

We extend a welcome to all of you.

New officers were announced. Vice President is Pam Potter, Coleen Hester is the new secretary. The new treasurer is Susan Sinya. Karen who is our past president and founding mother will be chairing the exhibition committee with (Continued next column)

Nancy Clausen. Ed Hunting does our beautiful newsletters and is also our web master. Karen Wylie is our program chair.

We then went on to the business of being more organized with our membership and sending out paper newsletters. The board itself will become more organized especially in regard to the membership.

Any news that is to be sent to Ed for our newsletter should be sent in by the 15th of the month before our next meeting. We feel that hearing of news from our members, would be an inspiration to others.

Kay Gordon gave a report on our current show which runs until November 22nd. We had 166 entries from 67 artists, 26 were from our group. Margaret dyer juried in 56 paintings, of which 13 were from our members. Many names representing PSA were also in our show. We held two workshops in which 36 people attended. At this time it looks as if we made \$4000 over and above our expenses.

Kay brought in the CDs we sent in for the show. Anyone who wants theirs please see Kay after the meeting.

We discussed the CD entry. It was felt that it was the easiest way to go. All groups are asking for CDs to be submitted. We have the directions on our website. It will take you through taking the picture to putting on the CD. We may have a demo and time set aside for members to try it at a meeting in the future.

Renewal membership fees are past due now. The membership goes from September to September.

Nancy Clausen reported on the Kevin Beck show. It will be a non-juried show. The dates are from the 14th of April to May 7th. On the day to deliver the paintings we will meet and transport paintings for anyone not wanting to drive to Blowing Rock. There will be a \$10.00 charge to defray the advertising expenses. The gallery charges a 35% commission.

Denise Geiger announced that the SVFAL is having an auction in December at the White Horse in Black Mountain. Anyone interested is asked to donate a painting for the auction. A painting by Deborah Squires is to be raffled off.

Fran asked if the donation had to be something we did. It does not.

Karen Wylie, our program chair, announced that at our January meeting Karen Margulis would be giving a demonstration on painting snow. After a short lunch break, we will meet back at the Ag center for a workshop. The fee is \$45.00. If interested please send money to Karen Chambers and make all checks out to the APS. The workshop will hold 20 people.

We then had a report by Karen Chambers on our next members show. It will be at the Black Mountain Art Center. The show will run from Oct. 2nd until Oct. 31st or Nov. 14th.

The center is not sure as to the duration of the show. Kevin Beck will jury the show. We will be sending images to him before the show. He will be doing a workshop for us. It will cost about \$350 for 3 days and \$475 for a week. The workshop will be plein aire.

We then had a program by Fran's husband Ken Hasson. He showed us how to make a filter system for our studios.

The program was followed by a critique. Marion Sink and Meredith Adler brought in paintings.

Respectfully Submitted,
Nancy Clausen
APS Secretary

Appalachian Pastel Society Membership Application

Name _____

Address _____

City _____ State _____ Zip _____

Telephone _____ AltTelephone _____

Email _____ Website _____

Renewing member _____ New Member _____

Artist _____ Art Supporter _____

Committee Interests:

Exhibitions _____ Programs _____ Hospitality _____ Telephone _____

Newsletter _____ Membership _____ Clerical _____ Workshops _____

Other _____

Awards/Experience/Comments/(or, what are your expectations from APS):

Please include a check made payable to "APS" in the amount of \$25 for membership for one year.
APS membership year starts September 1st.

Send to: Kay Gordon
APS Membership Chair
2016 Upper Paw Paw Road
Marshall, NC 28753

More information: www.appalachian-pastel-society.org
Or contact Kay at: kgordon@main.nc.us
828.649.3363 or 828.206.0240