

# Appalachian Pastel Society

March 2008

Appalachian Sunset - Kay Gorden

## Letter from the President

We have really had a good start to the New Year. The demonstration by Paul deMarrais at the January meeting was very entertaining and informative. All in all everyone went home with something new to try and talk about with friends.

We added two new members: Heather Friday from Taylorsville, NC, and Kay Robb from Hickory, NC.

I am currently in need of about four people to help with the Margaret Dyer workshop next fall. These are small jobs and will make the workshop run more smoothly. Give me a call to see what we need and to volunteer.

Let's continue to move forward and meet our needs and the needs of our future members. This is one great group of artists with which to work, talk, and play.

I will be out of town for the March meeting. Pam Potter will be in charge. If you have any suggestions or questions, Please contact Pam or me before then.

Your President,  
Karen White Chambers

\*\*\*

## In This Issue...

**Page 2...** Meetings  
and Events  
Member News

**Page 3...** Exhibitions

**Page 4...** Workshops

**Page 5...** APS Board  
Meeting Minutes

**Page 6...** APS General  
Meeting Minutes

**Page 9...** APS Member  
Application

\*\*\*

## Board of Directors

### Officers

President - Karen Chambers  
Vice President - Pam Potter  
Secretary - Nancy Clausen  
Treasurer - Robbins Richardson

### Committees

#### Directory:

Pam Potter

#### Exhibitions:

Kay Gordon  
Fran Greenberg  
Al Junek  
Suzanne Kamatz  
Mary Robinson  
Merritt Roach

#### Finance:

Denise Geiger

#### Programs:

Denise Geiger  
Nancy Clausen

#### Publicity:

Kay Gordon  
Connie Vlahoulis

#### Telephone:

Joan Engle  
Pat Spangler

#### Workshops:

Suzanne Doddridge  
Coleen Hester  
Al Junek  
Suzi Kamatz

\*\*\*

### Exhibitions and Newsletter Submission Dates

If you know of any exhibitions coming up, especially those within 3-4 hours of Asheville, let us know. Please allow enough lead-time (at least a month) for publication.

\*\*\*

## Meetings and Events

### Appalachian Pastel Society (APS) Meeting Societies

The APS meeting will be held Saturday, March 8, 2008, from 10 am - 12 noon, at the Swannanoa Valley Fine Art League Studio, at 999 Old Highway 70 in Black Mountain, NC.

This month's guest artist, Kelly Welch, is a classically trained, contemporary American Painter. Born and raised in the Blue Ridge Mountains of WNC, Kelly's love of the land shows in her passionate and atmospheric depictions of rural life in the mountains.

Working in both oil and pastel, her recent awards include juried "Signature Member," Western North Carolina Plein Aire Painters, 2004, "Best of Show," Montford Arts Festival, 2005, and "Best of Show" in the APS 2<sup>nd</sup> Annual Juried Pastel Art Exhibition, 2007.

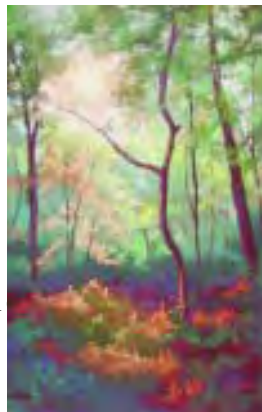


Moonrise - Kelly Welch

### News About Members

KATE THAYER, has been accepted into the Pastel division of the prestigious American Juried Art Salon's Fall/Winter show, with two entries - "Troubled Bridge Over Water" and "Last Lights."

American Juried Art Salon's twice-a-year competition attracts entries from throughout Europe and North America. Jurists are well known and university art professors in the U.S. and Canada.



Last Lights - Kate Thayer

Kate has been accepted into three consecutive shows and now has Master Class Plus status. To see the show online go to [www.artjury.com](http://www.artjury.com), then go to "AJAS Online (Continued next column)

Galleries," then "2007 Fall/Winter Show." To view Kate's portfolio within the art jury site, go to "Master Glass Plus," then Kate Thayer.

For more information, contact Kate at 1-828-698-7553

SUZI KARNATZ is the March Guest Artist for the Art League of Henderson County. You can view her show at the Opportunity House, in Hendersonville, NC

NANCY CLAUSEN is currently displaying her artworks in the Exchange gallery at Visual Art Exchange on Blake Street in Raleigh, NC.

### New APS Members

Heather Friday, Taylorsville, NC  
Kay Robb, Hickory, NC  
Karen Wylie, Spruce Pine, NC

### Dreams to Share

Artists are a funny breed.  
They shun the comforts other need.  
Give them a bit of space somewhere  
With light aglow and dreams to dare.

A dab of paint, a hunk of clay,  
Some bits of yarn to weave way,  
A piece of paper cool and white,  
may be a masterpiece tonight.  
Give the a bit of space somewhere  
With light aglow and dreams to dare.

They're scavengers if you must know,  
Gathering treasures as they go.  
A piece of driftwood, pipe or rock  
Becomes a sculpture from the dock.  
A factory building, old and worn,  
From hope to artist home is born.

Give them a bit of space somewhere  
With light aglow and dreams to share.

by Carol Bruce

\*\*\*

# Exhibitions

## Exhibitions to See

**Kate Thayer and Eula La Croix** will be in the next two person show at the Carolina Gallery on Morgan Square in Spartanburg, SC.

Kate is a member of significant art societies, including the Southeastern Pastel Society and Active Member status in the Degas Pastel Society and has her work in many regional and national shows. She has an international Master Class Plus status in the American Juried Art Salon.

Eula is a Signature Member of the Pastel Society of America and also a member of the Artists' Guild of Spartanburg, Art League of Henderson County, and a Life Member of the Palette Club of Louisville, KY of which she is founder. Her work is a part of many public and private collections nationally and internationally and she has had local, regional and national recognition for her art. Her most recent award was First Place in the Wickwire Gallery "Home and Hearth" City of Four Season's exhibition.

The reception will be Thursday, March 13, 6:30 p.m. – 9 p.m.  
The Exhibition runs through April 5, 2008

## Exhibitions to Enter

### International Association of Pastel Societies 11th Juried Exhibition

Butler Institute of American Art, Youngstown, OH.

Entry deadline: March 19, 2008.

Open only to members of IAPS. Proof of membership is required. (APS, members qualify as IAPS members).

For info and prospectus see "Call for Entry" at <http://pastelinternational.com/events> or e-mail Brenda Mattson at [brendamattson@msn.com](mailto:brendamattson@msn.com)

### The Good Earth An Online Fine Art Competition Honoring the Earth

Entry deadline: April 1, 2008.

**Over \$5,000 in prizes**, including four generous cash awards and 10 honorable mentions.

Three categories:

- Places and Scenes,
- Living Beings
- Objects from Nature.

All painting and drawing media used in all styles are welcome. Open to all artists, 18 and older. Winners announced on Earth Day, April 22, 2008.

Sponsored by CreateBetterPaintings.com, a new online artists' magazine. For a complete prospectus, visit [www.CreateBetterPaintings.com](http://www.CreateBetterPaintings.com). (Continued next column.)

## Exhibitions to Enter

### Southeastern Pastel Society Exhibition

International Juried Exhibition  
June 12–August 8, 2008. Atlanta, GA.

Entry deadline: April 1, 2008.  
One to three images on CD only.  
\$25 members and \$20/non-members.

Download prospectus at [www.southeasternpastel.org/downloads/prospectus-08.pdf](http://www.southeasternpastel.org/downloads/prospectus-08.pdf), or send Mikki Root Dillon your request and a #10 SASE to 662 Dorsey Circle, Lilburn GA 30047-4037

### Alabama Pastel Society 3rd National Open Juried Exhibition and Workshop

Exhibition Date: June 4 - June 30, 2008  
Awards Ceremony/Reception: June 6, 2008  
Location: The Soon Bok  
Lee Sellers Art Gallery  
Birmingham, AL  
Entry deadline: May 1, 2008

(For more information, see Prospectus and Entry Application on page 8.)

### Piedmont Pastel Society Exhibition and Workshop

Exhibition Date: Sunday November 9, 2008  
Awards Ceremony/Reception: 3pm-5pm.  
Location: Queens University  
Max Jackson Gallery  
Charlotte, NC  
Workshop dates: November 10, 11, and 12.  
Juror and workshop instructor: Maggie Price

For more information, contact Nancy Marshburn at [pabama@med.unc.edu](mailto:pabama@med.unc.edu)

### "The Artist's Magazine" 25th Annual Art Competition

Entry deadline: May 1, 2008

You may enter on-line or by mail, using slides or CD. (The best thing about a magazine competition you do not have to own the painting or send in the original work for display. **Over \$25,000 in cash prizes**. Five categories: Abstract/Experimental, Animal/Wildlife, Landscape/Interior, Portrait/Figure, and Still Life.

For more information, go to <http://www.artistsnetwork.com/annualcompetition> (Continued on page 4.)

# Exhibitions/Workshops

## Exhibitions to Enter

### The Pastel Society of North Carolina Membership Exhibition – Raleigh, NC

Entry deadline: July 8, 2008  
Exhibition Date: July 15 – October 14 (During the North Carolina Shakespeare Festival)  
Location: Theater Art Galleries, High Point, NC

For more details, contact Nancy Clausen at [Nancy@clausen.net](mailto:Nancy@clausen.net)

### Appalachian Pastel Society 3rd Annual Juried Exhibition

Juror: **Margaret Dyer** <http://www.margaretdyer.com>  
Entry deadline: August 1, 2008 (CD entries only)  
Opening Reception: October 3, 2008  
Exhibition Date: October 3 - November 22, 2008  
Location: Gallery of the Arts Council of Henderson County, 538 N. Main Street, Hendersonville, NC  
Prospectus available APS website May, 2008. (<http://www.appalachian-pastel-society.org>)

For more information contact Kay Gordon, (828) 649-3363, or e-mail [kgordon@main.nc.us](mailto:kgordon@main.nc.us)

A workshop by Margaret Dyer will also be held during the first three days of this event. (See APS - The Figure in Pastel. (next col))

### International Association of Pastel Societies 12th Web Show Exhibition

Show hosted on the IAPS website, [www.pastelinternational.com](http://www.pastelinternational.com)  
Entry deadline: August 8, 2008.  
Juried from slides only.  
Open only to members of IAPS. Proof of membership is required. (APS, members qualify as IAPS members).

For info and prospectus see “Call for Entry” at <http://pastelinternational.com/events> or e-mail Brenda Mattson at [brendamattson@msn.com](mailto:brendamattson@msn.com)

### Pastels on High (POH) International Exhibition

Sierra Pastel Society 7th International Exhibition October 5-26, 2008  
Juror/Judge: Urania Christy Tarbet  
Best of Show \$1,000, total \$4,000  
Soft pastels only; slides or digital images due by August 1, 2008  
Prospectus: <http://sierrapastelsociety.net/inter.html>  
or send #10 SASE to SPS-POH, PO Box 1936, Placerville, CA 95667 US

\*\*\*

## Workshops/Classes

### APS - The Figure in Pastel

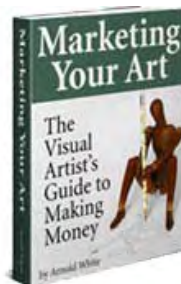
Margaret Dyer <http://www.margaretdyer.com>  
October 4, 5, 6, 2008 (Only 18 applicants accepted.)  
Location: Hendersonville, NC  
\$300. - due by September 15, 2008.  
\$100 deposit will reserve your place.  
Full refunds minus \$25 for cancellations before Sept 15.  
No refund after Sept. 15 unless workshop is filled.  
(See details and registration form on page 7.)  
For more information contact: Kay Gordon, (828) 649-3363 [kgordon@main.nc.us](mailto:kgordon@main.nc.us)

### Live Model Open Studio Swannanoa Valley Fine Art League

Fran Greenberg runs an open studio portrait session at the Swannanoa Art League Studio on Monday from 1:00 to 4:00. We have one model, one pose and short breaks every 20 minutes. It's free except we split the model's fee. She also runs the figure drawing session on Friday from 10:00 to 1:00. There are multiple poses for this session. For more information please contact Frances Greenberg 225-9524 [francesgreenberg@netscape.net](mailto:francesgreenberg@netscape.net) or see the Swannanoa Valley Fine Art League web site at [www.svfal.org](http://www.svfal.org)

### The Art League of Henderson County is hosting the following workshops:

May 5-7 – oil and Acrylic by Charles Gruppe  
July 7-9 – watercolor workshop by JoAnne Anderson  
August 4-6 – pastel workshop by Mikki Dillon from Atlanta



Get a Free  
“Marketing Your Art”  
eBook  
[Art Websites by Webtoady.com](http://ArtWebsitesbyWebtoady.com)

**Appalachian Pastel Society**  
**Board Meeting Minutes**  
**January 12, 2008**

Karen began the board meeting with the treasurer's report from Robbins Richardson. We have a total of \$2,296.64 in our checking account. This is after sending \$100. to IAPS for our membership dues.

Karen asked if anyone needed the minutes read or if there were any changes. The minutes had been read by everyone beforehand. Beverly Kies name had been spelled wrong and has been corrected.

Mary Robinson moved to accept minutes and Denise Geiger seconded it.

Kay reported that she and Kate Thayer had met and were proceeding ahead with our show for this year. We have signed a contract with the Hendersonville Fine Arts League for our show. It is to be held starting October and going through November. We will need to have pictures from the last show sent to them ASAP for the brochure they are printing. Mary will send a CD to them.

We will also have insurance during the time our show is there. We will be responsible for paintings sent in until they are unpacked. We will also be responsible for packing up after show. They will take a 30% commission on all sales. The cost of the reception will be split the art league and APS.

The show will be juried from CDs this time instead of actual paintings. The persons doing this will go through the CDs and assign everyone a number. Then they will send a larger CD to the juror.

Ed Hunting said he will put a tutorial on the website from the Southeastern Pastel Society which will explain how to do the CDs. Karen also suggested the Iris Photography would do it for us.

Karen asked if we might be interested in having a point system similar to SPS to raise our level of excellence. We decided to bring it before the members.

We had more discussion on the jurors for our show. A 5 day workshop or maybe a 3 day workshop could be included by the juror. We have (Continued next column)

**Board Meeting Minutes (Continued)**

talked with Leslie who charges \$300. for a workshop, which would mean that we would need to charge \$500 to cover airfare and accommodations. We are also thinking of Margaret Dyer. The workshop would be either portraits or landscape.

We need to start now to look for donations. We would like to see some monetary donations as well as the supplies. We are thinking of using Karen's panels to provide extra space.

We are in need of a PR person. This is a big job and requires time. There are examples of what to write and where to send the info and when to send in available. We also need to get the information out to other pastel societies.

The next order of business was to discuss possibly providing a stipend for the people coming in to do our programs. Mary moved that for now we give them \$50.00 to help defer expenses. Beverly Kies seconded it. We also voted to send Kathryn Wilson \$50. for doing our program in November.

Pam Potter volunteered to take on the job of Membership Chair which is also the job of Vice President. We still need a publicity chair.

Mary Robinson volunteered to be our liason with IAPS. She will keep us updated on any events that appear on their website.

The question came up as to whether or not we needed to be put in the Asheville roster so people would be aware of our existence. We voted to do this. Karen volunteered to take care of this. Susan Karnatz will also take care of getting the word out.

The board meeting was adjourned for our regular meeting.

Respectfully submitted,

Nancy Clausen - APS Secretary

\*\*\*

**Appalachian Pastel Society**  
**General Meeting Minutes**  
**January 12, 2008**

Our president Karen Chambers brought the meeting to order. She introduced herself and the officers and the chair persons.

At this time we need to have a workshop chairperson and also need to find a place to have the workshops. Kay Gordon suggested Christ Church in Hendersonville. There would be a charge of \$50.00

For our show in October we only want to have CD's submitted. We will have a tutorial beforehand. Iris Photo graphics on Merriman Ave. will also do CD's

Jan Onan is going to do the PR for our show with the help of Leigh Carter. It was mentioned that we also need someone to do PR for our meetings.

Karen brought up the business of having a membership hierarchy similar to that of the Southeastern Pastel Society. About half of the members voted yes. We decided we needed more information before we take a final vote.

We are still working on the juror for our show with a workshop connected with it.

We now have 50 members.

Mary Robinson wanted to know if anyone had photos of our paint around. She wanted to send them to IAPS.

Denise Geiger reported on workshops given by the Swannanoa Valley Fine Art League.

On May 15 and 16 Deborah Squires will be doing a pastel workshop. Tom Lynch will be doing a water color workshop on in June for 3 days.

In October Roger Dale Brown (Continued next column)

**General Meeting Minutes (Continued)**

will be giving one on oils. If anyone is interested please call Mary McMurray for more information.

Gina Gomez DeGrechie is holding a series of plein air workshops. They will be on the different seasons. She is teaching the workshop to coincide with the seasons of the year. It will be held at the Cottages at Spring Hope Farm. She is sending the information to Ed and has flyers in the back of the room.

Karen is working on an information sheet to standardize the size of mats and frames.

She also told us of two good books. One is Gallery Without Walls and the Art Spirit by Robert Henri.

We then introduced our visitors. Heather Friday has been painting in pastels since 1987.

Kay Rob has been painting for 15 years. Both are from Hickory. Karen Wiley from Spruce Pine has painted for about 1 year and Nancy Moore has been dabbling for years.

Karen then introduced Paul DeMarais who demonstrated his pastels and how he paints for our program.

He showed us how he makes his surfaces and gave us hand outs about materials he uses and where to buy them. He's been painting for over 30 years.

After the program we were allowed to buy the pastels he brought with him.

Respectfully submitted,

Nancy Clausen - APS Secretary

**- ADVERTISEMENT -**

NEW - NEW VIDEO FOR SALE \$20 APV FILMS/uk;"MOOD AND ATMOSPHERE IN PASTEL" FOURTH IN A SERIES BY BARRY WATKIN, BRITISH ARTIST - four demos: plein air & studio, bldg & meadow in warm evening light, panoramic view on a hazy summer day, a river at sunset plus! Barry is well-spoken/clear, a popular tutor.

Email CAT @ [chatdeuxchat@bigfoot.com](mailto:chatdeuxchat@bigfoot.com)

# Appalachian Pastel Society - Pastel Workshop

## The Figure in Pastels

### Margaret Dyer, PSA

Sponsored by the Appalachian Pastel Society  
In conjunction with The 2008 APS Exhibition

Margaret's description of the workshop...

"This class is an intense workshop in which students are taught a traditional pastel painting technique. Working with live models, students will explore drawing, composition, anatomy, proportion, value, color, and pastel application. Emphasis will be on developing form using light and shadow. For those wanting to speed up and become less tight in their work, this is an excellent class to take. Students do not need prior pastel experience. Some drawing would be helpful, but not imperative."

Margaret Dyer is a Master Pastelist with the Pastel Society of America. She has been featured in The Artists Magazine, American Artist, International Artist, Pastel Artist International, The Pastel Journal, "How Did You Paint That?-100 Ways to Paint People and Figures," and "Pure Color: The Best of Pastels." To learn more about this exceptional artist and teacher, visit her website at [www.margaretdyer.com](http://www.margaretdyer.com)

The total cost for the workshop is \$300. A place will be held for a deposit of \$100, with a September 15th deadline for the remainder. There will be a \$25 administrative fee for dropping out before the deadline. No money will be returned after the deadline unless the workshop is full.

The Workshop will be limited to 18 students on a first-come basis, so sign up early to ensure a place. When the workshop is full, you will be given the opportunity of remaining registered on a waiting list.

This workshop is sponsored by the Appalachian Pastel Society, in conjunction with the 2008 APS Exhibition. Both events will be held in Hendersonville, NC. For more information or a prospectus of the Exhibition, contact Kay Gordon, [kgordon@main.nc.us](mailto:kgordon@main.nc.us), (828) 649-3363, or see [www.appalachian-pastel-society.org](http://www.appalachian-pastel-society.org)

**REGISTRATION: Appalachian Pastel Society, Margaret Dyer Workshop, October 4, 5, 6, 2008**

Name: \_\_\_\_\_

Address: \_\_\_\_\_

City: \_\_\_\_\_ State: \_\_\_\_\_ Zip: \_\_\_\_\_

Phone \_\_\_\_\_ E-Mail \_\_\_\_\_

Check for \$300 enclosed.  Check for \$100 enclosed.  Check for \$200 (remainder due Sept 15)

**Make check payable to APS. Mail to Kay Gordon, 2016 Upper Paw Paw Rd, Marshall, NC 28753**

# Alabama Pastel Society 3rd National Open Juried Exhibition 2008

The Soon Bok Lee Sellers Art Gallery, Birmingham, AL 35226

June 4 - June 30, 2008

## Juror Information

Carole Katchen, after a successful writing career studied art at West Valley College in Northern California and received Outstanding Achievement in Art Award. She quickly received national recognition for her pastel paintings. In 1985 *The Artist's Magazine*, featured one of Katchen's paintings on the cover. Carole's commission work brought clients such as Chef Paul, Pres. Clinton and Sen. Clinton. Her painting of River Market hangs on set of Good Morning Arkansas. She has been seen on TV shows and written 17 art books which have over one million sales. Her drawings of women art the artwork for the play Menopause the Musical. Her bronze sculpture of chef and society figures were licensed for products and have sold in 32 countries. Recently she was invited to paint the Taiwanese National Opera, figures and lectured at the Univ. Of Shanghai and demonstrated pastels.

## Entry Details

- Entry Fee \$25 members, \$25 non-members
- Entries Due Date - May 1, 2008
- Checks payable to Alabama Pastel Society
- Submit up to 3 digital images on 1 cd
- Create digital images with digital camera, or scan slides or photos
- Name the file: eg: painting name.jpg
- Copy all 3 images to a cd
- Label cd with permanent ink with your name and names of paintings.
- Send cd to:

Robina Raszeja ([robina.raszeja@yahoo.com](mailto:robina.raszeja@yahoo.com))  
Alabama Pastel Society  
P. O. Box 118  
Trussville, AL 35173  
(Note: cd will not be returned.)

- Include a \$.41 SASE #10 business envelope for juror notification

## Additional Info:

Alabama Pastel Society  
P. O. Box 118  
Trussville, AL 35173

## Exhibition Location:

Soon Bok Lee Sellers Art Gallery,  
Hours: 8 - 4:30, Mon-Sat.  
Exhibit/Workshop Location:  
571 Park Ave., Hoover, AL 35226

## Artwork Details

- If there is an underpainting, painting should be predominately pastel

- Framed size not to exceed 48" high x 40 wide
- Art work must be attractively framed and ready for hanging. No sawtooth hangers or gallery clips. If mats are used, they must be white or off-white. A colored slim lining mat is acceptable. Colored mats are acceptable, but will not be judged.
- Art work must be original, not more than 3 years old, not done in workshop class, nor copied from published photo.

## Shipped Artwork Information

- Must be sturdily framed using plexi-glass - No shipped work will be accepted with glass.
- Must include a return pre-paid label with the shipped painting or artwork will not be returned.
- Artist is responsible for insurance.
- Shipping agent will receive and return boxes from Soon Bok Gallery
- Gallery Phone: 205-439-2860
- Questions: Robina Raszeja (email)
- \$45 for 1 painting, \$50 for 2, only one artist work per box (check with painting)
- Receive deadline: June 2 - Pick up: June 30

## Sales Information

- 30% sales commission
- No price change once work is submitted.

## Workshop Info

Workshop: Carole Katchen

**June 5-7, 2008, 9AM - 4PM** Fee is \$295.

Contact Cori Inglis 205-879-1402

or [ckibdi@netzero.net](mailto:ckibdi@netzero.net).

**Awards Reception & Members Meeting: June 6, 2008**

## Alabama Pastel Society 3rd National Open Juried Exhibition 2008 Entry Form

Name \_\_\_\_\_

Address \_\_\_\_\_ City \_\_\_\_\_ State \_\_\_\_\_

Phone: \_\_\_\_\_ Email: \_\_\_\_\_

Title Of Painting: \_\_\_\_\_ Image Size \_\_\_\_\_ Price \_\_\_\_\_

1 \_\_\_\_\_

2 \_\_\_\_\_

3 \_\_\_\_\_

## Juror Notification:

Title of Paintings \_\_\_\_\_ Accept \_\_\_\_\_ Reject \_\_\_\_\_

1 \_\_\_\_\_ / \_\_\_\_\_ / \_\_\_\_\_

2 \_\_\_\_\_ / \_\_\_\_\_ / \_\_\_\_\_

3 \_\_\_\_\_ / \_\_\_\_\_ / \_\_\_\_\_

Check List: 3 Paintings ( ) #10 SASE ( ) Entry Fee Payable To: APS ( )

Alabama Pastel Society 2008 Dues (\$25) \_\_\_\_\_ Workshop Deposit (\$175) \_\_\_\_\_



# Appalachian Pastel Society Membership Application Form

Name \_\_\_\_\_

Address \_\_\_\_\_

City \_\_\_\_\_ State \_\_\_\_\_ Zip \_\_\_\_\_

Telephone \_\_\_\_\_ E-Mail \_\_\_\_\_

Artist \_\_\_\_\_ / Art Supporter \_\_\_\_\_

Areas of Interest

Committee Interests:

Exhibitions\_\_\_ Programs\_\_\_ Hospitality\_\_\_ Telephone\_\_\_

Newsletter\_\_\_ Directory\_\_\_ Clerical\_\_\_ Other\_\_\_

Awards / Experience

\_\_\_\_\_  
\_\_\_\_\_  
\_\_\_\_\_  
\_\_\_\_\_

Please include a check with your application, made payable to the Appalachian Pastel Society in the amount of \$25 for one year membership (Sept.-Sept.) and mail to:

Appalachian Pastel Society  
5 Dunwoody Court  
Arden, NC 28704