



May 2010

Appalachian Sunset - Kay Gordon

## APS Events Calendar

For Details  
Click Event Date

May 7 - 8, 2010 1 pm-4 pm ..... Nicora Gangi Workshop  
October 14 - 18, 2010 9 am-4 pm ..... Ann Templeton Workshop  
October 20 - November 13, 2010 ..... APS Second National Juried Exhibition

### Letter from the President

Spring is in the air, and I know everyone has a smile on their face watching all the green and other colors appearing before our eyes. At last count APS is up to over 70 members, and we have something to offer everyone. Our program chairman, Karen Wylie, has some exciting events planned in the months ahead.

Our next meeting, Sat. May 8, will be presented by Syracuse University Art Professor Nicora Gangi. She will hold a one day workshop on Friday, May 7, and then do a presentation and a half day workshop on Saturday called "Composition and The Power of Color." The spaces are filling up quickly, so please sign up now for this informative workshop. We are also busy getting ready for our APS Second National Juried Exhibition to be held October 20 – November 13. The show is being judged by nationally known pastel artist Ann Templeton. Your CD's are due in August, so start painting for this competitive event. Anyone attending our show two years ago saw some amazing talent.

If you have news on competitions, prizes won, or any new announcements, please send these to our newsletter editor, Ed Hunting, at [ehunting@gmail.com](mailto:ehunting@gmail.com). I look forward to seeing everyone at the May 8 meeting. It is spring! Get up, get out, and get active.

Your President,  
Beverly Kies

### In This Issue...

Page 2... Meetings  
Events  
Member News

Page 3... Artist of  
the Month

Page 4... Exhibitions

Page 6... Workshops

Page 7... APS  
Meeting Minutes

Page 10 APS Member  
Application

## Board of Directors Officers

President - Beverly Kies  
Vice President - Pam Potter  
Secretary - Marian Sinks  
Treasurer - Susan Sinyai

## Committee Chairpersons

Membership & Communications:  
Kay Gordon

Exhibitions:  
Karen Chambers  
Nancy Clausen

Programs:  
Karen Wylie

Publicity:  
Pam Potter

Hospitality:  
Gail Wheeler

Workshops:  
Karen Wylie

Library:  
Mary Robinson

\*\*\*

## Exhibitions and Newsletter Submission Dates

If you know of any exhibitions coming up, especially those within 3-4 hours of Asheville, let us know. Please allow enough lead-time (at least a month) for publication.

## APS Events Calendar

### APS Meeting

This month's APS meeting is Saturday, May 8, 2010, in the Youth Building at the WNC Agriculture Center, Fletcher, NC.

Lecture/demonstration 10:00 am - Noon  
Paid Workshop 1:00 pm - 4:00 pm

Our program speaker, Presenter: **Nicora Gangi**, will talk about her painting techniques and influences on her work.

Nicora is also presenting a paid afternoon workshop entitled "**Composition and The Power of Color**" (Fee: \$45.00 APS members, \$70.00 non-members). This three-hour workshop is a great follow-up to her all day workshop session, "**Fine Relations: Line, Mass color, and Composition**," May 7, from 9am to 4 pm. (See more under "Workshops/Classes," Nicora Gangi, on [page 6](#).)

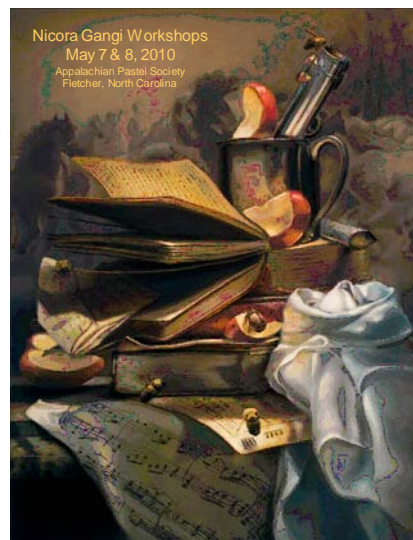
Workshop size is limited to fifteen (15) participants. Workshops are open to the public only if space permits after APS members sign up. Please register early, if you plan to attend.

### About Nicora Gangi

Nicora holds a BFA and MFA, and has been on the art faculty at Syracuse University for 29 years. To learn more about Nicora and view her work, please visit her web site at [www.nicoragangi.com](http://www.nicoragangi.com)

**For advance registration:** Make check, payable to Appalachian Pastel Society, and mail to:

Karen Wylie  
APS Program & Workshop  
Chairperson  
179 Meadow View Road  
Spruce Pine, NC 28777  
Telephone: (828)765-6001  
Email: [karen@soapshed.com](mailto:karen@soapshed.com)



## Member News

### New Members

Carol B. Morrow - Swannanoa, NC  
Dolores Fischer - Arden, NC  
Cindy Wentzell - Sandown, NH  
Edward Morris - Flat Rock, NC  
Rebecca Reynolds - Lyman, SC

### Accolades

**Kate Thayer, Suzi Karnatz, Merritt Roach, and Kay Gordon** all had entries accepted into the Southeastern Pastel Society's 14th International Juried Exhibition. The show is being held at the Oglethorpe University Museum of Art, Atlanta, GA, and runs from May 20th to June 27th. The opening reception is Thursday, May 20th from 7 to 9pm. Kay Gordon will also be awarded her Member of Excellence certificate at the reception.

**Beverly Kies** and **Susan Sinyai** have been accepted into Blackbird Frame and Art, located at 365 Merrimon Avenue, Asheville, NC.

Beverly has also put her paintings in Kathleen's Art Gallery located at 98 N. Trade St., in downtown Tryon, NC.

(Continued on page 4.)

# APS Artist of The Month Lorraine Plaxico



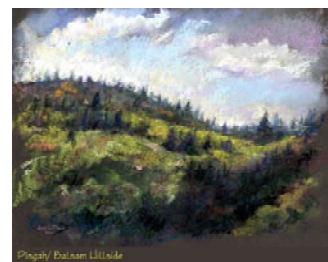
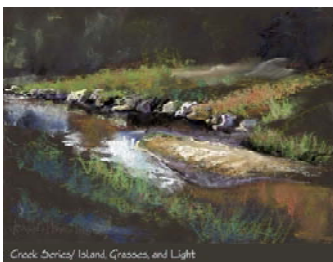
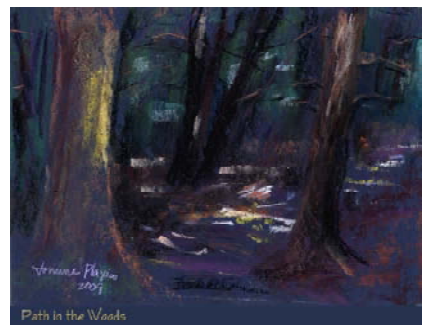
Lorraine Plaxico has enjoyed a successful career as a professional illustrator for more than twenty-five years. As an Associate member of the Asheville Home Builders Association and an Allied member of the AIA NC, she has produced illustrations for The Biltmore Estate, The Grove Park Inn, and the HGTV Dream Home (2006 in Lake Lure, NC and 2009 in Sonoma, CA).

Although her professional work as an architectural illustrator consists largely of straight lines, Lorraine's personal affinity is for the organic shapes of nature. Loose, free-form landscape painting has always been her first love.

In 2004, Lorraine's friends Noel Thurner and Patrick Horan offered her their "piece of heaven" in the woods as a sketching retreat and it birthed a new personal style of art for her. "I picked up a box of pastels for the first time since I was a teenager, and something magical happened. Strong strokes of the rich pigments reflect the immediacy and movement that come from drawing outdoors (in plein air). This medium offers me the freedom of line and color and the expressiveness that is the opposite of the drawings I produce for builders and architects. It flows without planning; I react quickly to the scene and changing light, and am always surprised with the end result."

Lorraine especially enjoys working on colored paper, purposely leaving some parts of the paper blank and allowing it to contribute to the composition. She is visually drawn to the dramatic places where very dark areas meet very light ones-like Rembrandt's portraits and the moody Dutch landscapes. The strong contrast is like a spotlight on a stage. She finds it challenging trying to capture the constantly moving light.

Lorraine's artwork has been described as musical, peaceful, and with a "dreaminess that makes her paintings almost surreal."



# Exhibitions

## Member News

**Accolades** (Continued from page 2.)

**Lorraine Plaxico** is the April 2010 Featured Artist of the Month at The Asheville Gallery of Art at 16 College Street Asheville, NC.

The show runs through Friday, April 30, 2010. Regular gallery hours are Monday through Saturday, 10:00 a.m. to 5:00 p.m.

Her exhibit, "Chasing the Light," features her pastel landscapes. You can view her work online at [www.ashevillegallery-of-art.com/month.html](http://www.ashevillegallery-of-art.com/month.html)

To learn more about Lorraine and see more of her art work, please go to [www.womensartspace.com/lorraineplaxico](http://www.womensartspace.com/lorraineplaxico)

## Art Tips

By Richard Mccandless

Promote yourself - If you have paint all over your clothes, don't be afraid to let people know you're an artist.

Always keep art in your car, even on vacation. People may say, "Do you have any art with you, may I see some?" You may end up with a sale.

Put your business cards on bulletin boards all around town: restaurants, stores, post office, etc.

Read the art sections in the daily newspapers. They list many show and workshops.

Look at other magazines besides art. You'll see scenes, ads, photos, unusual color combinations for ideas.

Always carry a camera with you or in your car, You never know when a good scene or clouds will appear.

Paint every day, whether for 15 minutes or for hours. Your best painting is one you haven't yet painted.

## Appalachian Pastel Society Second National Juried Exhibition

Waynesville, NC

**Entry Deadline:** August 11, 2010

**Exhibit Dates:** October 20 – November 13, 2010

**Reception:** October 22, 2010 6:00-8:00 pm

**Sponsor:** Appalachian Pastel Society

**Venue:** Haywood County Arts Council's Gallery 86  
86 North Main Street, Waynesville, NC 28786

Telephone: (828) 452-0593

**Awards:** \$1000 Best of Show, plus other cash awards, pastel sets, other art supplies and product certificates.

**Juror and Judge:** Ann Templeton  
[www.anntempleton.com](http://www.anntempleton.com)

**Eligibility:** Open to all pastelists currently residing within the United States. Artwork must be at least 80% soft pastel. Nupastels and similar "harder" pastels are considered soft pastels. Oil pastels are not considered pastels. Artwork must be original, not more than 3 years old, not done in a class or under supervision of another artist, and not copied from published photos or from photos taken by others without their permission. Tastefully done nudes will be accepted at the discretion of the exhibition committee. Entries must be submitted as digital images only (JPEG format on CD). All artwork must be for sale.

**Fees:** APS members - \$25 for 1 to 3 images.  
Non-members - \$35.

**Commission:** 35%

**Submit Entries by USPS to:**

Karen Chambers  
116 Sams Branch Road  
Candler, NC 28715

Include a self-addressed, stamped #10 business envelope for juror notification. CD's will not be returned.

**E-mail:** [karenpaints@hotmail.com](mailto:karenpaints@hotmail.com)

**Phone:** (828) 665-8538

**Website:** [www.appalachian-pastel-society.org](http://www.appalachian-pastel-society.org)

**Prospectus/Entry Form:**

[appalachian-pastel-society.org/APS2010National\\_Prospectus.pdf](http://appalachian-pastel-society.org/APS2010National_Prospectus.pdf)

## The Artist's Magazine 27th Annual Art Competition

**Publication**

**Entry Deadline:** May 3, 2010

**Exhibit Date:** December 2010 issue of *The Artist's Magazine*

**Sponsor:** F+W Media, Inc.

[www.fwmedia.com/community/fineArt](http://www.fwmedia.com/community/fineArt)

**Venue:** The Artist's Magazine

**Awards:** More than \$25,000 in Cash Prizes!

5 First Place Awards: \$2,500 each

5 Second Place Awards: \$1,250 each

5 Third Place Awards: \$750 each

15 Honorable Mentions: \$100 each

Winners will be featured and finalists' names will be published in the

December 2010 issue of *The Artist's Magazine*. Nine finalists will be

featured in the "Competition Spotlight" in *The Artist's Magazine*, 12 finalists

will be featured as "Artist of the Month" on our website and the

works of twelve finalists will be offered on our website as desktop

wallpaper. All winners and finalists will receive a certificate suitable for

framing. Plus, the Student/Beginner Division (for artists age 16 or over

who (1) have been enrolled in a post-high school art program for no more than four years

**OR** (2) have pursued art on their own or in workshops/lessons for no more than four years)

5 First Place Awards: \$150 each

5 Second Place Awards: \$75 each

5 Third Place Awards: \$50 each

Award Winners in the Student/Beginner division will be featured in the

January/February 2011 issue of *The Artist's Magazine*. **PLUS** all

Award Winners and Honorable Mentions receive a one (1) year

subscription to *The Artist's Magazine*.

**Categories**

**Portraits/Figures:** Portrait and figure entries can be individuals or groups, and will be judged on expressiveness, personality and draftsmanship.

Juror: Sharon Sprung

[www.sharonsprung.com/bio.html](http://www.sharonsprung.com/bio.html)

**Still Life/Floral:** Entries will be judged on overall design, unique arrangement of subject matter, handling of medium, lighting and mood.

Juror: Jeffrey T. Larson

[www.jeffreytlarson.com](http://www.jeffreytlarson.com)

(Continued on page 5)

## Exhibitions

### **Artist's Magazine** (Continued from page 4.)

**Landscape/Interior:** Any landscape, from city scenes to imaginary horizons, will be judged on the creative use of form, space, lighting and mood.

Juror: Paul Jackson

[www.pauljackson.com/home.asp](http://www.pauljackson.com/home.asp)

**Abstract/Experimental:** With unlimited subject matter, entries will be judged on creative use of design, texture, media, lighting or special techniques.

Juror: Cathy Woo [www.alkiweb.com](http://www.alkiweb.com)

**Animal/Wildlife:** Any animal in any setting is fair game for this category. Entries will be judged on the innovative handling of the subject, the expression and rendering.

Juror: Chris Bacon

[www.chrisbacon.com](http://www.chrisbacon.com)

**Eligibility:** The competition is open to artists anywhere in the world. Only original artwork, conceived and created by the entrant, will be considered. You may enter work in any and all categories; there is no limit to the number of images you may enter.

**Fees:** \$25 per image, Student / Beginner \$15.00 per image

**Commission:** None

**Mail:** The Artist Magazine's Annual Art Competition, 700 E. State Street, Iola, WI 54990

**E-mail:**

[art-competition@fwmedia.com](mailto:art-competition@fwmedia.com)

**Website:**

[www.artistsnetwork.com/artistsmagazine](http://www.artistsnetwork.com/artistsmagazine)

**Prospectus:**

[www.artistsnetwork.com/annualcompetition](http://www.artistsnetwork.com/annualcompetition)

### **Second Saturdays**

#### **NC - Historic Sites & Museums**

North Carolina Department of Cultural Resources is launching a new program this summer called 2nd Saturdays: History, Heritage, Arts & Fun. These 2nd Saturday events in June, July and August are an opportunity for artists to showcase their work at more than 30 state historic sites and museums across the state. The dates of the Saturday events are June 12, July 10 and August 14. The event time varies at each site but is generally 10 a.m. to 4 p.m.

(Continued next column)

### **Second Saturdays** (Continued)

#### **Entry Deadlines:**

May 10, 2010 for July 10, 2010 event

June 14, 2010 for August 14, 2010 event

Artists can use these opportunities to sell their work, broaden their audiences and make connections with a larger cultural community. There is **no cost to participate and at most sites artists retain 100 percent of their sales**, although you are responsible for providing your own table, tent and display. Several sites would also like to include musicians, performing artists, authors and storytellers in these events. For more information, go to [www.ncarts.org/freeform\\_scm\\_template.cfm?ffscm\\_id=607](http://www.ncarts.org/freeform_scm_template.cfm?ffscm_id=607)

### **46th Festival in the Park**

#### **Charlotte, NC**

#### **Deadlines:**

Artist's Walk: May 15, 2010

Festival Lake Walk: July 15, 2010

**Exhibit Date:** Thursday, September 23 through Sunday, September 26, 2010

**Venue:** Freedom Park, Charlotte, NC  
**Awards:** Best of Show \$600, 1st Place \$250, 2nd Place \$150, 3rd Place \$100, Honorable Mention Ribbons

**Eligibility:** Exhibit spaces are awarded based on the quality and variety of the exhibitor pool.

Exhibitors who commits to demonstrate their medium full-time will receive preferred location.

Work exhibited must be original and attributable solely to the display artist. Only original artwork will be eligible for awards (prints, posters or reproductions can be displayed for purchase but will not be included in judging). **Festival in the Park takes no commission for any art sales.**

**More Info:** [www.festivalinthepark.org](http://www.festivalinthepark.org)

#### **Pastel Society of America**

#### **38th Annual Open Juried Exhibition**

##### **New York NY**

**Deadline:** May 28, 2010 Postmark

**Exhibit Date:** September 7 - October 2, 2010

**Reception:** September 24, 2010 6 pm

**Sponsor:** Pastel Society of America

**Venue:** The National Arts Club  
15 Gramercy Park South  
New York NY 10003

(Continued next column)

### **Pastel Society of America** (Continued)

**Awards:** Over \$20,000 in Awards and Collectors' Purchases

**Jury of Selection:** Board of Governors

**Judges of Awards:** Robert Palevitz, Paul Rahilly, Vivian Zoë

**Eligibility:** Open to all artists, members and non-members. Traditional soft pastels ONLY

**Fees:** Slide or CD entry. PSA Members: \$25/1 entry; \$35/2 entries; \$45/3 entries. Non-members: \$30/1 entry; \$40/2 entries; \$45/3 entries. Master Pastelist may submit one entry for \$25

**Mail:** Pastel Society of America, Inc  
15 Gramercy Park South  
New York NY 10003

**Website:** [www.pastelsocietyofamerica.org](http://www.pastelsocietyofamerica.org)

**Prospectus:**

[www.pastelsocietyofamerica.org/2010%20Prospectus.pdf](http://www.pastelsocietyofamerica.org/2010%20Prospectus.pdf)

### **Paint America**

#### **4th Annual 2010 Paint the Parks 100**

##### **National and Online**

**Deadline:** May 31, 2010

**Exhibit Date:** Exhibitions begin August 1, 2010

**Venue:** Physical touring and Online

**Awards:** \$10,000 Grand Prize Purchase Award, \$5,000 Mini50 Grand Prize, Purchase Award, Cash Jurors Awards, Additional prizes and awards

**Juror:** Nationally recognized juror panel

**Eligibility:** Open to all artists, anywhere in the world, Employees, board members, relatives or partners of PaintAmerica Association, and the judging panel are not eligible.

**Fees:** \$40.00 if entry is postmarked by May 1, 2010; \$50.00 if entry is postmarked after May 1 and on or prior to May 31, 2010. (\$20 and \$25 for Minis.) You may submit as many entries as you wish in as many park regions as you wish.

**Commission:** All entries must be for sale. Artists receive 60% of the sale price or purchase award amount

**Mail:** Paint America  
P.O. Box 4031  
Topeka, Kansas 66604

**Phone:** (785) 273-4502

**Fax:** (785) 273-4510

**E-mail:** [mail@paintamerica.org](mailto:mail@paintamerica.org)

**Prospectus:**

[www.paintamerica.org/10PaintParksEntryForm.pdf](http://www.paintamerica.org/10PaintParksEntryForm.pdf)

(Exhibitions Continued on page 6)

## Exhibitions (Continued from page 5)

### 1st annual Foothills Artist Market

#### Columbus, NC

Showcase your talent at this juried event just in time for Christmas!

**Entry Deadline:** May 31, 2010

**Exhibit Date:** November 6, 2010 10am - 4 pm

**Venue:** Adawehi Institute & Wellness Center  
Columbus, NC

For more information and an application, please contact:

Tiffany Gipson  
[tiffany@jackiewoods.org](mailto:tiffany@jackiewoods.org)  
(828) 894-6439

### 4th Annual Keystone National Juried Works on Paper Exhibition

#### Mechanicsburg, PA

**Deadline:** June 23, 2010 Postmark

**Exhibit Date:** September 26 - October 22, 2010

**Reception:** September 26, 2010 from 5-7 pm

**Sponsor:** The Art Center School and Galleries

**Venue:** The Art Center School and Galleries  
18 Artcraft Drive  
Mechanicsburg, PA 17050

**Awards:** \$1200 Best of Show Award, plus additional cash and merchandise awards

**Juror:** Janet Walsh, A.W.S.

**Eligibility:** Open to all artists nationwide with original works on paper. No photography or computer created images. 2-D only. All entries must be completed within the last three years and NOT previously exhibited in Keystone National

**Fees:** \$35 for two entries. Make check's payable to MAC

**Commission:** 33%

**Mail:** The Art Center School and Galleries  
18 Artcraft Drive  
Mechanicsburg, PA 17050

**E-mail:** [art.center@verizon.net](mailto:art.center@verizon.net)

**Phone:** at (717) 697-2072

**Website:** [www.mechanicsburgartcenter.com](http://www.mechanicsburgartcenter.com)

**Prospectus:**

[www.appalachian-pastel-society.org/Keystone.pdf](http://www.appalachian-pastel-society.org/Keystone.pdf)

### Artist Web Site Design

One Year Free Domain  
One Year Free Hosting

Free Image Prep

starting at just

**\$99.95**

[www.website-design-webpage-design.com](http://www.website-design-webpage-design.com)

## Workshops/Classes

### Nicora Gangi, May 7 - 8, 2010

**Location:** Youth Building at the WNC  
Agriculture Center, Fletcher, NC

**"Fine Relations: Line, Mass color, and Composition" Friday May 7, 2010.** One Day Workshop. **Fee:** APS members \$100.00, non-members \$125.

**"Composition and The Power of Color" Saturday May 8, 2010** Afternoon Workshop **Fee:** APS members, \$45.00 non-members \$70.00).

**See supplies to bring [HERE](#)**

[www.appalachian-pastel-society.org/nicoragangi.pdf](http://www.appalachian-pastel-society.org/nicoragangi.pdf)

**About Nicora Gangi:** Nora holds a BFA and MFA, and has been on the art faculty at Syracuse University for 29 years. To learn more about Nicora and view her work, please visit [www.nicoragangi.com](http://www.nicoragangi.com)

**Workshop limit:** 15 participants.

**For advance registration:** Please make check payable to Appalachian Pastel Society, and mail to:

Karen Wylie  
APS Program & Workshop Chairperson  
179 Meadow View Road  
Spruce Pine, NC 28777

**Tel:** (828)765-6001

**Email:** [karen@soapshed.com](mailto:karen@soapshed.com)

Bringing this speaker to Asheville requires special travel arrangements and expense for APS. Your early registration is much appreciated!

### SVFAL Spring Special!

**Karen Chambers - Plein Air Pastel Workshop.** May 27, 28 and 29, 2010 9:30 am - 4:00 pm. All 3 days, only \$105 SVFAL studio, 999 W. Old Route 70, Black Mountain, NC. For more information, contact Denise Geiger at 828-669-5947, e-mail: [geigerjd@charter.net](mailto:geigerjd@charter.net)

### Luana Luconi Winner

#### Two and One-Half Day Workshop

(Rescheduled From January 2010)

**Location:** Youth Building at the WNC  
Agriculture Center, Fletcher, NC

**"Building People the Easy Way"**

**Saturday July 10, 2010, 1:00 - 4:00 pm**

A three-hour workshop for anyone who has ever wanted (Continued next column.)

### Luana Luconi Winner (Continued)

to use a figure as a design element in a landscape or interior painting.

Learn to paint hands, heads, and full figures by building the form in a quick and easy method. Bring information and reference photos, sketches, and designs that you would like to use for paintings you want to create with figures. Bring paintings in progress for critique and hands-on help.

**Fee:** APS Members \$45.00 (Non APS members: \$70.00).

### "Finding Your Artistic Voice" Sunday and Monday July 11 - 12, 2010, 9:00 am - 4:00 pm

A personal development class with attention to improving and refining your own special style, subject, technique, and gift. Learn to dig deeper into your artistic foundation. Build on what you already know.

This will be an enthusiastic class whether painting for the first time, or expanding your horizons as an experienced artist.

Step-by-step instruction, mini-demos, PowerPoint presentations, individual attention, and end-of-day critiques. Your personal art questions answered about developing ideas, painting techniques, or the business of art. Bring reference materials (photos, sketches, designs) to paint any subject that has meaning to you.

Bring projects in progress to redevelop and complete. Learn solid, old standards in planning and designing a painting as well as new and experimental ways to build and finish with attention to detail.

**Fee:** APS Members \$100.00 one day, \$185.00 for both Sunday and Monday (Non-members: add \$25.00).

### About Luana Luconi Winner:

A founding member of the Portrait Society of America, Luana Luconi Winner was schooled in Rome, Florence, Switzerland, and the USA, and currently resides in North Carolina. Winning multiple national awards and silver medals to Best (Continued on page 7.)

## Workshops/Classes

### **Luana Luconi Winner** (Continued from page 6.)

in Show in international competitions, Luana's portraits, paintings, and murals hang in corporations, universities, and residences on both sides of the ocean. Her articles have appeared in International Artist Magazine, The Artist, the Art of the Portrait, Signature, Strathmore's on-line Magazine, and other periodicals. Luana is author of four workbooks, numerous papers, and 20 instructional DVD's.

Mrs. Winner has served as faculty for the International Association of Pastel Societies, the Portrait Society of America, and American Artist Magazine Art Methods and Materials. She is North Carolina Ambassador for the Portrait Society of America, and a member of their international portfolio review committee. She is also 2010 President of the Pastel Society of North Carolina.

To learn more about Luana or view her work visit [www.winnerstudios.com](http://www.winnerstudios.com)

#### **Workshops limited to 15 participants each.**

**For advance registration:** Please make check payable to Appalachian Pastel Society, and mail to:

Karen Wylie

APS Program & Workshop Chairperson

179 Meadow View Road

Spruce Pine, NC 28777

**Tel:** (828)765-6001

**Email:** [karen@soapshed.com](mailto:karen@soapshed.com)

Bringing this speaker to Asheville requires special travel arrangements and expense for APS. Your early registration is much appreciated.

### **Barry Watkin Pastel Workshop**

Sponsored by the Art League of Henderson County

August 24–26, 2010

Hendersonville, North Carolina

Known not only for his exceptional talent as a painter but also as a tutor, lecturer and demonstrator, **Barry Watkin** will be instructing students in a variety of pastel painting techniques.

Barry enjoys working with students and his easy, informal manner rubs off on everyone. He is a keen advocate of the sketchbook, and encourages his students (Continued next column)

### **Barry Watkin** (Continued)

to do likewise. His inspiration is the play of light on the landscape and the changing atmospheric effects throughout the seasons.

**Fee:** \$300.00 for all three days. Minimum Deposit \$150 (Refundable up to one month prior to workshop date) Balance due at workshop.

**About Barry Watkin:** Barry has produced four Art Instructional DVDs and a book on the Pastel Medium, He has written numerous articles for art magazines and was the first British artist to have a four page feature in Pastel Artist International.

Barry has exhibited with most of the major London Societies and has paintings in a many private collections. In 2000, he was elected a Fellow of the Royal Society of Arts. To get more info and a registration form go to [appalachian-pastel-society.org/Barry\\_Watkin\\_flyer\\_with\\_app.pdf](http://appalachian-pastel-society.org/Barry_Watkin_flyer_with_app.pdf) For questions, please call 828-891-5307, or e-mail [gailon.m@gmail.com](mailto:gailon.m@gmail.com)

### **Ann Templeton - Five Day Workshop** "Abstracting the Landscape in Pastels"

(Sponsored in conjunction with the 2010 APS Second National Juried Exhibition.)

**October 14 - 18, 2010 9:00 am - 4:00 pm.**

Demos and lectures in the morning. Students will paint in the afternoon. Two general critiques, as well as daily critiques. Hands-on learning, with plenty of time for suggestions.

**Fee:** APS Members \$625, Non-members: \$650 Workshop limited to 18 students.

Hold your place with a deposit of \$125, balance due September 15, 2010.

Learn more about Ann Templeton at [www.anntempleton.com](http://www.anntempleton.com)

Get additional information and entry form at:

[appalachian-pastel-society.org/AnnTempletonWorkshop2010.pdf](http://appalachian-pastel-society.org/AnnTempletonWorkshop2010.pdf)

**For advance registration:** Make check payable to Appalachian Pastel Society, and mail to:

Karen Chambers

116 Sams Branch Road

Candler, NC 28715

Phone: (828) 665-8538

E-mail: [karenpaints@hotmail.com](mailto:karenpaints@hotmail.com)

## APS Meeting Minutes

### Appalachian Pastel Society Board Meeting Minutes February 23, 2010

**Members Present:** Beverly Kies (President), Pam Potter (Vice President), Susan Sinyai (Treasurer), Marian Sinks (Secretary), Kay Gordon, Karen Chambers, Ed Hunting, Mary Robinson.

**Call to Order.** President Beverly Kies called the meeting to order at 5:00 p.m. at the Red Lobster Restaurant.

**Treasurer's Report.** Susan Sinyai reported the Society has \$4,858.73 pending clearance of \$198.00 to the Pastel Journal and the addition of \$500 for 20 membership fees of \$25 each.

**Membership Report.** Membership Chair Kay Gordon reported we had 64 members as of February 23, 2010.

**Programs Report.** Program chair Karen Wylie was absent but sent her report (discussed below under "New Business.")

#### **Old Business:**

##### **1. Participating Member Status.**

A proposal that had been tabled at the prior meeting about whether "Participating Member" status should include points for being a board member or officer, in addition to participating in APS shows was discussed. After discussion the following motion was made, seconded and approved:

**Resolved,** the APS Bylaws are hereby amended to change the definition of 'Participating Member' to read as follows:

**"Participating Member:** Member who has participated in four APS shows of any kind. This category would include non-juried shows. Or, a member who has participated in three APS shows of any kind and has been a board member or committee chair for one year."

#### **New Business:**

**1. Changes to Appalachian Pastel Society Juried Exhibition Catalog.** We examined the 2008 catalog.

After discussion, (Continued on page 8.)

# APS Meeting Minutes

Board Meeting Minutes Feb. 23, 2010 (Continued from page 7.)

Karen Chambers proposed the cover of future APS Juried Exhibition Catalogs be printed on a good quality glossy cover stock and feature a color image of one of the juror's pastel paintings. Upon motion duly made and seconded this proposal was approved.

2. **Advertisements and Money Awards.** A general discussion was had about money awards and ideas for advertising. No formal action was taken and the subject was carried over to the next meeting.
3. **Increased Publicity.** There was a general discussion of getting information out to the public to increase participation in future APS shows, workshops and to increase membership. Consideration was given to:
  - Newspaper advertising,
  - Extending invitations to other art societies,
  - Newsletter announcements,
  - Notices on the APS web-site; and
  - Sending announcements or flyers to art galleries and restaurants.

No formal action was taken and this matter was carried over to the next board meeting.

4. **Display Advertisement in APS Newsletter.** A request was made for a special display advertisement in the APS Newsletter to increase awareness of the upcoming 2010 Juried Exhibition. No formal action was required.
5. **Programs: Advertisements and Fees for Saturday Afternoon Workshops.** After discussion, a motion was made, seconded and approved that:

*Advertisements shall be placed to increase attendance at future Saturday afternoon workshops (held after the regular membership meetings) and workshop fees shall be:*

  - \$45.00 for members; and
  - \$70.00 for non-members (which includes a \$25.00 one year membership).

The \$45.00 fee is allocated as follows: \$30.00 is paid to the instructor and the remaining \$15.00 is retained by APS.

6. **Programs: Jack Pardue Workshop Conflict with April "Paint-In."** The Jack Pardue workshop scheduled for Saturday April 10, 2010 at Conn-Art in Hendersonville conflicts with the scheduled "Paint-In" at the Ag. Center.

It was noted that most members would probably elect to attend the Jack (Continued next column.)

Board Meeting Minutes Feb. 23, 2010 (Continued)

Pardue workshop instead of the "Paint-In." The monthly charge for the Ag. Center meeting room is \$60.00. After discussion, upon motion made and seconded it was decided that:

*The April 10 "Paint-In" at the Ag. Center will be cancelled unless at least six members notify Kay Gordon (by e-mail or otherwise) before April 1 that they wish to attend the "Paint-In."*

7. **Programs: Cancellations and Future Saturday Afternoon Programs.**

**Cancellations and Rescheduling Luana Winner Program.** It was noted that both the January 9 Luana Winner program and the March 13 Paula Ford program were cancelled. After discussion it was decided to schedule Luana Winner as the speaker/demonstrator at the July APS meeting and conduct a Saturday afternoon workshop after the meeting.

**March 13 – Suzi Karnatz.** It was announced that APS Member Suzi Karnatz will be the speaker at the March 13 APS meeting and will conduct an afternoon workshop.

**May 15 – Nicora Gangi.** It was announced that Nicora Gangi was confirmed as the speaker of the May 15 APS meeting and will conduct a two day workshop that weekend.

8. **Member of the Month.** After discussion it was decided future APS Newsletters would feature a member each month. Ed Hunting will prepare a recommended format for a member profile of not more than 500 words that will include a photograph of the featured member and images of one or more of his or her paintings.
9. **Inclement Weather Cancellations.** Karen Chambers was appointed as the person to telephone regarding cancellation of board meetings or other APS events due to inclement weather. E-mails will also be sent to announce any future cancellations.

## Items Received for Information:

**Pastel Society of North Carolina Juried State Exhibit.** APS Representative Nancy Clausen reported that Luana Winner will chair the Pastel Society of North Carolina Juried State Exhibit. A gallery in downtown Raleigh will be the venue at a time and date to be announced. The gallery is to provide advertising in magazines, including *Southern Living* and cash prizes will be awarded.

## International Association of Pastel Societies.

Three items were noted:

(Continued on page 9.)



# APS Meeting Minutes

Board Meeting Minutes Feb. 23, 2010 (Continued from page 8.)

- **15<sup>th</sup> IAPS Juried Exhibition.** Images of the paintings that won awards at the 15<sup>th</sup> Juried IAPS Exhibit have been posted on the IAPS web-site: [www.pastelinternational.com](http://www.pastelinternational.com).
- **IAPS 2010 Web Show.** The entry deadline for the 2010 IAPS Web Show is September 15, 2010.
- **IAPS Newsletter.** The IAPS Newsletter is available on-line at the IAPS web-site at (address above).

## Future Board Meetings:

**March 13, 2010.** The March meeting of the Board will be at 9:00 a.m. on Saturday, March 13 at the Ag. Center meeting room prior to the regular membership meeting and Suzi Karnatz workshop.

**April 6, 2010.** The April meeting of the Board will be at 5:00 p.m. on Tuesday, April 6 at the Olive Garden Restaurant (unless a restaurant with a better meeting room is located in the meantime).

**Adjournment.** The meeting was adjourned at 7:30 p.m.

## Appalachian Pastel Society Board Meeting and General Membership Meeting Minutes March 13, 2010

**Members and Committee Chairs Present:** Beverly Kies (President), Karen Wylie, Marian Sinks (Secretary), Kay Gordon, Gail Wheeler, Mary Robinson, Nancy Clausen and Karen Chambers.

President Beverly Kies called the meeting to order at 9:00 am at the Ag. Center Meeting Room.

**Treasurers' Report:** Susan Sinyai sent a report that the Society had \$4,849.53 as of February 28, 2009. A brief discussion was had on the need to better coordinate getting checks to Susan so she can make deposits more quickly.

**Membership:** Kay Gordon reported we currently have 66 members – an increase of 27 from late 2009. This increase reflected:

- Many existed members who renewed after receiving a renewal notice; and
- Many new members who joined after the Board adopted a requirement of membership to attend monthly workshops.

A general discussion followed about membership issues and the need to increase membership. It was decided not to join the Chamber of Commerce. The need for better publicity was discussed. Various strategies for increasing membership were discussed. No formal action was taken.

(Continued next column)

Board Meeting Minutes Feb. 23, 2010 (Continued)

**Demonstration and "Paint Out" on April 10.** Kay Gordon announced Jack Pardue was giving a free demonstration in Hendersonville on April 10 that coincided with the ordinary Paint-In date at the Ag. Center. In view of the anticipated attendance at the Pardue demonstration it was decided to change the April Paint-In into a "Paint-Out" at Owens Park Lake. This will save the \$60 monthly rental on the Ag. Center meeting room.

**Nicora Gangi Workshop.** Marian Sinks advised the two day workshop by Nicora Gangi (formerly of Syracuse University) would be held May 7 and 8. The Friday cost is \$100 for members and \$125 for non-members. The Saturday cost is \$45.

**Ann Templeton Workshop.** Ann Templeton (our juror for the National Show in October) is giving a workshop on Abstraction in Pastel Landscapes on October 14-18 at the Ag. Center. The cost is \$625.

**Spring Non-Juried Membership Exhibition.** Beverly Kies announced difficulty in finding a venue for the Spring Non-Juried Exhibition. Beverly advised that two members from Kingsport, TN suggested having an exhibition at East Tennessee State University. Other options considered including the Transylvania County Arts Council Gallery in Brevard and possibly the Ambleside Gallery in Greensboro. No formal action was taken.

**Paint Outs.** Karen Chambers will organize the June 12 paint-out. We still need a person to organize remaining paint-outs for 2010.

**Luann Winter Workshop.** This workshop was cancelled in February and is now re-scheduled for July.

**National Show.** Karen Chambers and Nancy Clausen advised the 2010 Juried IAPS exhibition will open October 22 at Gallery 86 at the Haywood Arts Council in Waynesville. Ann Templeton is the juror. Submissions are due August 11. Acceptances will be mailed September 8. Works will be received October 4 through October 11.

**Library.** Librarian Mary Robinson discussed usage of library materials. Mary is to prepare a proposal on library usage, fees and fines.

**Member of the Month.** Mary Robinson wants to feature one APS artist in each bi-monthly newsletter. The artist will submit a photograph and artist's statement. Mary suggested members who wish to be featured should submit their names for selection.

The Board Meeting was adjourned at 10:00 a.m. and was followed by the **General Membership Meeting** at which the Bylaw changes were formally adopted and various items for information were discussed. A discussion was also held about the requirements of the IAPS exhibition and the need for volunteers to sell \$25 ads, receive works, etc.

Respectfully submitted,  
Marion Sinks - APS Secretary

# Appalachian Pastel Society Membership Application

Name \_\_\_\_\_

Address \_\_\_\_\_

City \_\_\_\_\_ State \_\_\_\_\_ Zip \_\_\_\_\_

Telephone \_\_\_\_\_ AltTelephone \_\_\_\_\_

Email \_\_\_\_\_ Website \_\_\_\_\_

Renewing member \_\_\_\_\_ New Member \_\_\_\_\_

Artist \_\_\_\_\_ Art Supporter \_\_\_\_\_

Committee Interests:

Exhibitions \_\_\_\_\_ Programs \_\_\_\_\_ Hospitality \_\_\_\_\_  
Telephone \_\_\_\_\_

Newsletter \_\_\_\_\_ Membership \_\_\_\_\_ Clerical \_\_\_\_\_  
Workshops \_\_\_\_\_ Other \_\_\_\_\_

Awards/Experience/Comments/(or, what are your expectations from APS):

\_\_\_\_\_

\_\_\_\_\_

\_\_\_\_\_

Please include a check made payable to "APS" in the amount of \$25 for membership for one year.  
APS membership year starts September 1st.

Send to: Kay Gordon  
APS Membership Chair  
2016 Upper Paw Paw Road  
Marshall, NC 28753

More information: [www.appalachian-pastel-society.org](http://www.appalachian-pastel-society.org)  
Or contact Kay at: [kgordon@main.nc.us](mailto:kgordon@main.nc.us)  
828.649.3363 or 828.206.0240