

November 2010

Appalachian Sunset - Kay Gordon

APS Events Calendar

*For Details
Click Event Date*

October 20 - November 13, 2010 APS Second National Juried Exhibition
November 13, 2010 APS General Meeting

Letter from the President

The 2010/11 APS membership year has begun, and a new group of officers and committee leaders are in place. I'm just beginning to understand what a challenge it is to hold the interest of an "audience" of individualists. APS members are so fortunate to have such a creative and enthusiastic Board of Directors. We are assured of an exciting and productive year!

As in previous years, bi-monthly meetings will include demos and workshops by many talented artists. In addition, we are planning guidance for improving skills in show entry...addressing such topics as photography, framing, the jurying process, and the mechanics of show entry.

Once again, we are honored to have been invited to hold our 2011 Juried Member Exhibition at the Black Mountain Center for the Arts. Details for that show, which will begin mid-October, will be announced in future newsletters.

I'm delighted that there will also be non-juried gallery show opportunities in the coming year. Our co-chairs of the Gallery Committee have been identifying venues and making contacts with gallery managers. These shows will be open to APS only, so be sure your membership is current. Details will be given in APS Newsletters and Special Mailings.

By the time this newsletter is out, the APS National Show should be in full swing on Main Street in Waynesville at Gallery 86 of the Arts Council of Haywood County. If you haven't already been to see it, be sure to go. This is an opportunity to see excellent artwork from some of the top pastel artists in the country...including, of course, our own excellent talent!

APS President
Kay Gordon

In This Issue...

- Page 2...** **Meetings
Events**
- Page 3...** **Member News**
- Page 4...** **Artist of
The Month**
- Page 5...** **APS 2nd
Annual Juried
Exhibition Winners**
- Page 6...** **Anne Templeton
Workshop News**
- Page 7...** **Exhibitions to See
Exhibitions to Show**
- Page 10...** **APS Member
Application**

Board of Directors

Officers

President - Kay Gordon
Vice President - Annette Winters
Secretary - Marian Sinks
Treasurer - Susan Sinyai

Committee Chairpersons

Membership & Communications:
Kay Gordon

Exhibitions/Workshops:
Karen Wylie
Kate Thayer

Gallery/Non-Juried Shows:
Karen Chambers
Nancy Clausen

Programs:
Gail Wheeler

Publicity:
Carol Morrow

Hospitality:
Colleen Meecham
Marnie Mikell
Sheryl Daniels

Paint Out Locations:
Susan Voorhees

Library:
Mary Robinson

Newsletter/Web site:
Edward Hunting

Newsletter Article Submissions

If you know of any upcoming exhibits or workshops, especially those within 3-4 hours of Asheville, please let us know!

News item submission deadline for the newsletter is the 15th of the month prior to the APS General meeting.

November APS 2010

APS Events

APS Meeting

The Appalachian Pastel Society general meeting will be in the Youth Building at the WNC Agriculture Center, Fletcher, NC., Saturday, November 13, 2010 at 10: am.

The November APS General Meeting Program will be Announced via Special E-mail

Directions to WNC Agriculture Center

From Asheville:

Take I-26 East to Exit 40. Make a right turn off the ramp on to Airport Road, 280. Turn left at the first stop light past the Asheville Airport on to Fanning Bridge Road.

The main entrance, Gate 1, is on the right.

From Hendersonville:

Take I-26 West to Exit 40. Make a left turn off the ramp on to Airport Road, 280. Turn left at the first stop light past the Asheville Airport on to Fanning Bridge Road. The main entrance, Gate 1, is on the right.

WNC Agriculture Youth Center Location Map



NOTICE

Beginning November 2010, all APS Board Meeting Minutes and General Meeting Minutes can be viewed on the APS web site via an "APS Meeting Minutes" link located on the "About" page.

Thank You Paul deMarrais!

The Appalachian Pastel Society gives its sincere thank you to Paul deMarrais for his sponsorship of the opening reception of the APS Second National Juried Exhibition. We appreciate you Paul!

APS LIBRARY

Full length DVD's:

"Painting Outdoor Shadows in Pastel" with Derorah Secor - 60+ minutes

"Get Started in Pastels: Deborah Secor Paints the Landscape" - 60+ minutes

"Pastel Journal" All 2006 Issues on one disc. Searchable and Printable

Article DVD's:

"Wade Into Water" - An article from The Pastel Journal

"Clouds" - An article from The Pastel Journal

Pastel Journal Magazines

VHF Videos:

"Pastel Techniques" - Barry Watkins - 60 minutes

"Progressing With Pastel" - Barry Watkins - 60 minutes

BOOKS:

"Pastels" - Margaret Evans

"Painting with Pastels" - Maggie Price

"Painting Children" - Bev Lee

"Painting Beautiful Skin Tones with Color and Light in Oil, Pastel and Watercolor" - Chris Saper

Library Rental policy:

1. APS membership required
2. Fee per checked out item: \$5.00
3. Rental time: 2 months - from one meeting to the next
4. Late Return: an additional \$5.00 per item is due.

If you have suggestions for books and/or DVD's, or would like to donate to the library, please contact Mary Robinson at sailmary@gmail.com or call 828.625.0450.

Member News

New Members

Antoinette Matichak, Knoxville, TN
Evelyn Fay, Asheville, NC
Vaun Healey, Lenoir, NC

Accolades

Anne Propst had two pastels chosen for exhibit at the Cabarrus Art Guild in Concord, NC, a juried show with well over a hundred entries from six counties. Ann's work was on exhibit in the Historic Concord Courthouse through October 6, 2010.



"Curtain Call"

J. Kay Gordon's pastel painting, 'Sharing A Heritage' was accepted into the Thirteenth Biennial National Exhibition of the Degas Pastel Society. The exhibit was held in the Hammond Regional Arts Center, Hammond, LA. The Show juror/judge was Susan Ogilvie. Kay attended the opening reception and awards ceremony on October 8. The Show runs through November 5, 2010.



"Sharing A Heritage"

Kate Thayer's painting, "A Time for Me," won the Pastel Guild of Europe, August 2010 "Get Dusty Challenge."

Kate says, "Receiving an email about the Pastel Guild of Europe intrigued me. The Scribbler Newsletter offered styles and views from artists other than in the US. After joining, I entered the Dusty Figure Competition because it gave me an opportunity to be judged by European judges.



"A Time For Me"

"A Time For Me" is [a painting of] my daughter when she came to visit.

The critique was very valuable to hear what they thought was done well.

The award was a Portrait set of Pan Pastels.
(Continued Next column)

Kate Thayer (Continued)

Having never tried them, I am looking forward to using them on my next figure painting."

Learn more at: www.pastelguild.com/Scribbler/pastel_scribbler_sep2010.pdf

Zoe Schumaker's pastel painting "Under the December Moon" will be featured on United Community Bank's holiday cards and advertisements in Georgia, North Carolina, and Tennessee.



"Under the December Moon"

Suzanne Karnatz's painting, "Primary Colors Plus One" was accepted into the IAPS 2010 17th Juried Web Exhibition. This year was a record event with over 850 entries of which only 72 paintings were selected for exhibition. Way to go Suzanne! See the online IAPS exhibition at:



"Primary Colors Plus One"

www.pastelinternational.com/COMPETITIONS/seventeenth-web/seventeenthjuried.html

Custom Built Web Sites For Artists

One Year Free Domain

One Year Free Hosting

Free Image Prep

Starting at just \$99.95

www.website-design-webpage-design.com

828-625-0450

APS Membership Renewal

The APS membership year started on September 1, 2010. Have you renewed? If you're not sure, or if you have other membership questions, please contact me.

We have an exciting year in store for the remainder of 2010 and for 2011. Our new program chair is continuing the tradition of excellent meeting demos and "mini-workshops." Watch for details in APS newsletters. APS meetings are open to the public, but only current members may attend the mini-workshops.

The National Juried Show is currently under way. Only current members can begin earning points toward the newly established Special Membership Levels of APS.

APS member meetings are held the second Saturday every other month, starting with January. Programs at the meetings include guest demonstrations and member participation activities.

In addition to the member meetings, APS often offers "painting-gatherings" on the second Saturday of the months not having regular meetings. The intention of these get-togethers is to paint together with other pastelists. Often such meetings will have an informal demo or topic of discussion. When the weather is suitable, plein air sessions are planned.

Don't miss these opportunities. Send your \$25 check with the Membership Application that appears elsewhere in this newsletter.

Kay Gordon
APS Membership Chair
2016 Upper Paw Paw Rd
Marshall, NC 28753
kgordon@main.nc.us
(828) 649.3363

APS

Artist of The Month

Frances Greenberg



Frances Greenberg displayed early signs of artistic accomplishment when, at age four, she created a mural of nudes in crayon on her bedroom wall. She continued her informal training by practicing drawing on the coasters at her fathers New Jersey restaurant. She received her first real recognition by getting caught doing caricatures of her seventh grade teachers.

Eventually, Ms. Greenberg acquired various college degrees and teaching certificates and taught grade school in Brooklyn and drawing, painting and art history at Prince Georges Community College in the Washington DC area.

Ms. Greenberg is now an accomplished artist whose career includes almost three decades of full-time participation in major art fairs throughout the country. In 2001, she moved to Asheville, NC and in 2004, she retired from the art fair circuit. In the years since retiring, she still spends lots of time making art and taking workshops, as well as organizing and running the open studio sessions for the Swannanoa Valley Fine Arts League. Over a long career, Ms. Greenberg has worked in many paint media; currently she is using pastels and has just joined the Portrait Society of America.

E-mail: francesgreenberg@netscape.net



Clair



Amy



Gamell



Curtis



Cynthia

APS 2010 Second National Juried Exhibition Award Winners

There were 130 paintings submitted to the exhibition by fifty artists from twelve states (Vermont, New York, North Carolina, South Carolina, Virginia, Tennessee, Georgia, Michigan, Missouri, California, Kansas, and Texas). Ann Templeton juried in a total of 53 paintings from those submitted. The subject matter ranged from landscapes to portraits/people to animals to abstract. Thirty eight artists had paintings accepted into the exhibit. Twenty-nine entrants were APS members. Twenty-one of them were juried into the show with a total of 26 paintings.

Anne commented that she usually can easily pick out about 3-4 paintings that are definitely going into the show. For this show, however, it was different. The entry assortment was of such high quality, and there were so many qualified paintings from which to choose, show selection was more difficult than usual.

Five awards went to APS members!

Award Winners

Best in Show - Diana DeSantis "Letitia"
\$1,000 Cash

1st - J. Kay Gordon "Blue Motorcycle"
\$500 Terry Ludwig Gift Certificate + \$250 Cash

2nd - Kate Thayer "Lovin' the Spin I'm In"
3 Sets of Unison Pastels from Jack Richeson + \$150 Cash

3rd - Susan Sinyai "Jaune Brilliant"
Set of Paul de Marais' latest pastel colors + \$100 Cash

Lorraine King Lndscp Prize - Bre Crowell "Hobcaw Blues"
\$200 Cash

Ella Maguire Award - Donna Slade "Scent of a Rose"
\$100 Cash

HM - Irena Taylor "Last Minute Adjustment"
Jack Richeson 18 Portrait Set + 5 Sheets Richeson Pastel Paper

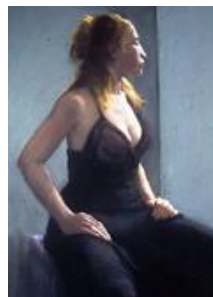
HM - Tobi Bordihn "White Dress"
Jack Richeson 18 Portrait Set + 5 Sheets Richeson Pastel Paper

HM - Marian Sinks "Little Green House"
Cheap Joes \$50 Gift Certificate

HM - Suzanne Karnatz "Autumn Tum ble"
Book

People's Choice Award - Bette Coningsby "End of Day"
True Blue \$35 Gift Certificate

All paintings juried into the exhibition will be posted on the APS web site November, 2010.



Best in Show
"Letitia"

Diana DeSantis



1st Place
"Blue Motorcycle"

J. Kay Gordon



2nd Place
"Lovin' the Spin I'm In"

Kate Thayer



3rd Place
"Jaune Brilliant"

Susan Sinyai



Lorraine King Lndscp Prize
"Hobcaw Blues"
Bre Crowell



Ella Maguire Award
"Scent of a Rose"

Donna Slade



Honorable Mention
"White Dress"

Tobi Bordihn



Honorable Mention
"Last Minute Adjustment"

Irena Taylor



Honorable Mention
"Autumn Tum ble"

Suzanne Karnatz



Honorable Mention
"Little Green House"

Marian Sinks



People's Choice Award
"End of Day"

Bette Coningsby

Anne Templeton Workshop

The Ann Templeton workshop was a huge success!

Everyone really enjoyed themselves and learned a lot.

There were twenty-five participants. Some came for three days, some for two days, and some for just a day.



Anne expressed her appreciation of the room and it's size.

Ann lectured and demonstrated in the mornings. We painted in the afternoon and worked on what we had learned in the morning. Class finished with a critique of participant's work.



Anne said that she felt the workshop was very well organized and said others had said the same.



Anne said the group was a good, mostly above average, artist group. Participants listened well and used the techniques she taught.



Exhibitions and Competitions

Exhibitions to See

Waynesville's Art After Dark

Waynesville, NC – The Waynesville Gallery Association presents Art After Dark on Friday, November 5, 2010 from 6–9pm.

Enjoy a stroll through working studios and galleries on Main Street, Depot Street and in Historic Frog Level. Festive flags identify participating galleries such as: Art on Depot; Blue Owl Studio and Gallery; Burr Studio and Gallery; Earthworks Gallery; Grace Cathey Sculpture Garden and Gallery; Haywood County Arts Council's Gallery 86; Ridge Runner Naturals; Textures; The Jeweler's Workbench; TPennington Art Gallery; and Twigs and Leaves Gallery.

Visit Historic Frog Level just down the hill from Main Street and see metal sculptor Grace Cathey at Grace Cathey Sculpture Garden. Check out Grace's progress as she uses steel to sculpt life into a three-dimensional native bird called the Ruffed Grouse. The transformation is spectacular.

Make a point to visit the Haywood County Arts Council's Gallery 86 to see the APS 2nd National Juried Exhibition. The show features forty-eight of the most stunning pastel works from across the United States. **Reception:** Friday, November 5 from 6-9pm For more Information see www.haywoodarts.org, visit us on Facebook, or call 452-0593.

The Waynesville Gallery Association's Art After Dark takes place the first Friday each month from May - December 2010. See more information at www.waynesvillegalleryassociation.com or call 828-452-9284.

Wolf Kahn at the Morris Museum of Art

Ends November 7, 2010

Wolf Kahn is a master of pastel and is widely considered one of America's finest landscape painters.

Morris Museum of Art

1 10th Street
Augusta, GA 30901
(706) 724-7501

Museum Hours: Tuesday–Saturday: 10:00am – 5:00pm Sunday:
Noon – 5:00pm Closed Mondays and major holidays.

Web Site: www.themorris.org/wolf-kahn.html

Appalachian Pastel Society Second National Juried Exhibition

Ends November 13, 2010

Haywood County Arts Council's Gallery 86

86 North Main Street
Waynesville, NC 28786
Phone: (828) 452-0593

Gallery Hours: Monday - Saturday 10:00am - 5:00pm
Web Site: www.haywoodarts.org

Associated Artists - Cultural Crossroads Exhibition

Ends November 23, 2010

Over 300 entries. Some from as far away as Indonesia. Of these, juror Colin Quashie has selected 74 for acceptance & exhibition. Free - Open to the public. Additional information is available on

Associated Artists of Winston-Salem

301 W 4th St
Winston Salem, NC 27101
Phone: (336) 722-0340

Gallery Hours: Monday - Friday, 9am - 5pm Saturdays 10am - 2pm
Web site: www.associatedartists.org

Exhibitions to Show

Grace Centre 10th Annual Juried Art Show

Mills River, NC

Entry Deadline: Sunday, October 31 2pm - 8pm

Monday November 1 10am - 12pm

Deliver art to: Grace Centre 495 Cardinal Road, Mills River, NC 28759

Exhibit Dates: November 6 - December 8, 2010

Reception: Saturday, November 6 7:30pm

Sponsor: Grace Centre

Venue: Grace Centre
495 Cardinal Road
Mills River, NC 28759

Awards: Cash awards announced at reception

Juror: Craig Drennen, Professor of Art, University of Georgia, Dean of Skowhegan, and board member at Art Papers.

Eligibility: All original media accepted

Fees: Entry limited to two works \$15 for one, \$25 for two

E-mail: Dusty dustymcnabb@gmail.com

Phone: (828) 329-3651

Website: www.graceinfo.org/index.php?option=com_content&view=article&id=1328:juried-art-show-2010&catid=80:art&Itemid=258

Prospectus/Flyer: www.graceinfo.org/images/stories/gracecentre/newsandevents/artexhibits/2010Juried/Juried-Art-Show-Poster-web.jpg

Entry Form: www.graceinfo.org/images/stories/gracecentre/newsandevents/artexhibits/2010Juried/10th_Juried_entry_form.doc

The 10th Annual

Art Inter/National Exhibition... here and abroad

Pittsburgh, PA

Entry Deadline: November 1, 2010

Exhibit Date: January 4-29, 2011

Sponsor: Box Heart Gallery

Venue: Box Heart Gallery

Awards: One artist will receive the Best of Show Award. This artist is awarded Box Heart "Artist of the Year" and receives their own solo exhibition

Jurors: Nicole Capozzi and Joshua Hogan

Eligibility: Art Inter/National is a celebration of artistic expression from all over the world. It's an exhibition that displays how the space one occupies both influences and guides the creative process. Box Heart encourages diversity in the media used to create the work, in the artists and his/her interpretation of Art Inter/National. There are no limits or boundaries, no categories or types. Box Heart is looking for expressions in art that are not only cultivated, but also created because of each artist's place on this earth.

Fees: No Entry Fee

Commission: 40%

Mail: Box Heart Gallery
4523 Liberty Avenue
Pittsburgh, PA 15224

Telephone: (412) 687-8858

Fax: (412) 687-6338

E-mail: Nicole Capozzi boxheartexpress@earthlink.net

Website: www.boxart.org

Prospectus: www.boxheart.org/nn/exhib.html

(Exhibitions to Show Continued on page 6)

Exhibitions and Competitions

Exhibits to Show

IT'S A SMALL, SMALL WORK 2010 An Exhibit of 12" Works

Waynesville, NC

Entry Deadline: November 5, 2010

Exhibit Date: November 17 - December 31, 2010

Sponsor: Haywood County Arts Council

Venue: Gallery 86

86 North Main Street
Waynesville, NC

Eligibility: Open to all artists with a permanent address in the Qualla Boundary or one of the following counties: Alleghany, Ashe, Avery, Buncombe, Burke, Caldwell, Cherokee, Clay, Graham, Haywood, Henderson, Jackson, Macon, Madison, McDowell, Mitchell, Polk, Rutherford, Surry, Swain, Transylvania, Watauga, Wilkes, Yadkin, and Yancey. All work must be original and made within the last 2 years.

Fees: \$20 A minimum of 3 pieces and a maximum of 5 pieces will be accepted from each artist. The \$20.00 fee will remain the same regardless of number of pieces are submitted.

Commission: 30% All work must be for sale.

Mail: Haywood County Arts Council
P.O. Box 306

Waynesville, NC 28786

Phone: (828) 452-0593

Email: info@haywoodarts.org

Website: www.haywoodarts.org

Prospectus: www.appalachian-pastel-society.org/SSW2010_Prspcts.pdf

Chowan University's National Juried Exhibition 2011

Murfreesboro, NC

Deadline: November 5, 2010

Exhibit Dates: January 24 - February 17, 2011

Sponsor: Department of Visual Art

Venue: Green Hall Art Gallery

Awards: \$300.00 Best in Show, \$200.00 2nd Place, \$100.00 3rd Place

Juror: Maxine Payne

Fees: \$40.00/ three images

Mail SASE to: Carolyn Phillips

Department of Visual Art
Chowan University
One University Place
Murfreesboro, NC 27855

E-mail: Carolyn Phillips . phillc@chowan.edu

Prospectus: www.chowan.edu/documents/general/ChowanJuried.pdf

4 Bridges Arts Festival 2011

Chattanooga, TN

Deadline: November 15, 2010

Exhibit Dates: April 16 & 17, 2011

Sponsor: Association for Visual Arts

Venue: 1st Tennessee Pavilion

Awards: \$10,000 in merit awards

Juror: TBA

Eligibility: Artists making fine art or fine craft in all mediums.

Applications accepted online at www.zapplication.org

Fees: \$40

Commission: None

E-mail: Jerry Dale McFadden jdmcfadden@avarts.org

Phone: (423) 265-4282, x106

Website: www.4bridgesartsfestival.org

Prospectus: www.4bridgesartsfestival.org/downloads/Prospectus2011.pdf

Exhibits to Show

Emerging Artists 2011

Hudson, NY

Entry Deadline: November 30, 2010

Exhibit Dates: April 1 - 30, 2011

Sponsor: SlowArt Productions

Venue: Limner Gallery, Hudson, NY and Limner Gallery web site

Awards: \$1000 cash prize awarded to one artist. One artist will be awarded a two page display in Direct Art Volume #18, Fall 2011 issue. Two artists will be awarded a single page display. Direct Art is distributed to bookstores across the USA including Borders and Barnes and Noble. For more information on Direct Art view: www.slowart.com/about.htm

Eligibility: Open to all artists 18 years or older. All media

Fees: \$35 (up to 4 images), \$5.00 each over four

Commission: 30% All works must be for sale

Mail: SlowArt Productions
Emerging Artists 2011
123 Warren Street
Hudson, NY 12534

E-mail: slowart@aol.com

Website: www.slowart.com

Prospectus: www.slowart.com/prospectus/ea2011.htm

Online Registration: www.slowart.com/prospectus/eaeml.htm

International Art Search - 2011 Annual International on-line juried competition/paintings and drawings

Online

Entry Deadline: 12/1/2010

Exhibit Date: January 5 - December 31, 2011

Venue: Art works accepted into the show will be featured on www.internationalartsearch.com and published in hard cover catalogue. On-line exhibit will include e-mail addresses and/or websites of accepted artists to facilitate independent sales of work

Awards: \$3250 in cash awards: \$1,500 Best of Show, \$700 First Place, \$500 Second Place, \$250 Third Place, \$100 Merit Award I, \$100 Merit Award II, \$50 Honorable Mention, \$50 Honorable Mention

Juror: Greg Biolchini, Master, P.S.A. (www.biolchini.com)

Eligibility: Artists must be age 18 or older. Art must be painted or drawn

Fees: \$25 first entry, \$5 each additional entry

Commission: None

Mail: International Art Search
PO Box 188
Fort Myers, FL 33902

E-mail: info@internationalartsearch.com

Website: www.internationalartsearch.com

Prospectus: www.internationalartsearch.com/uploads/IAS_PROSPECTUS.pdf

Entry Form: www.internationalartsearch.com/uploads/IAS_Entry_Form_Oct.pdf

First Annual 50-State Pastel Art Review

France

Deadline 12/3/2010

Exhibit Dates: *February 3 - 28, 2011*, at Frisco Art Gallery of the Discovery Center, Frisco, Texas. *July 2 - August 21, 2011*, at International Festival du Pastel in la Ville de Feytiat near Limoges, France. *July 9 - August 28, 2011*, at Les Estivales Internationales du Pastel at the Abbaye de Saint Florent-le-Vieil, Pays de la Loire, France. *September 10 - October 9, 2011*, at Salon International du Pastel in the Abbaye de Tournus, Bourgogne, France.

Fifty works of art and several alternates will be selected to represent the finest examples of pastel painting being produced by American visual artists in (Continued on page 7.)

Exhibitions and Competitions

Exhibits to Show

First Annual 50-State Pastel Art Review (Continued from page 6.)

four categories: Figurative, Portrait, Still Life, and Landscape.

Selected artists will be invited to exhibit in Europe's most beautiful and prestigious international exhibitions dedicated to the Art of Pastel, hosted by the Societe des Pastellistes de France; the oldest Pastel Society in the world.

Entries will be judged and finalists chosen by Jean-Pierre Merat, President of the Societe des Pastellistes de France and by Diana Moya, Ambassador in America of the Societe des Pastellistes de France. Artists will also be considered for demonstrations and/or workshops during these international events.

Find additional information at: www.dianamoya.com/PASTEL.html
For inquiries, please contact Diana Moya at info@dianamoya.com
Prospectus: appalachian-pastel-society.org/50StatePastelArtReview_Prospectus.pdf

One: the Manifest Prize

Cincinnati, OH

Deadline: December 8, 2010

Exhibit Dates: January 21 - February 18, 2011

Sponsor: Manifest Creative Research Gallery and Drawing Center

Venue: Manifest Creative Research Gallery

Awards: Solo exhibition award and \$300+ cash prize, plus five free copies of the full-color catalog. Semi-finalists will also be featured in the catalog.

Juror: Juried by committee of 5-9 professional and academic advisors

Eligibility: Open to all. Works will be juried by blind review and scored based on quality alone. Open to any and all traditional and non-traditional media and genres, including experimental media. Entries must represent original works of art or design and be available and capable of being exhibited in Manifest's Parallel Space gallery. Works need not be for sale.

Fees: \$10 per work submitted

Commission: 30%

E-mail: Jason Franz jason@manifestgallery.org

Phone: (513) 861-3638

Website: www.manifestgallery.org

Prospectus: www.manifestgallery.org/one

1st International Donkey Art Prize Modern and Contemporary Art Competition

Milan-London-New York-Tokyo

Deadline: December 15, 2010

Exhibit Dates: February-May 2011

Sponsor: Blindonkey Cultural Association (Continued on page 7.)

Venue: Bakehouse Art Complex

561 NW 32nd Street

Miami, FL, 33127, Wynwood, Florida, 33127

Awards: €15000 in cash prizes divided equally among three categories: Painting, €5000, Digital art, €5000, Photography, €5000
Winner of each category will receive free accommodations in a four star hotel in Milan, Italy, for the awarding ceremony and exposition.

Jurors: Moratti Andrea, Pimazzoni Andrea, Delaini Cesare, Fiorese Mauro, Antolini Davide, Cossu Antonio, Berlanda Orietta, Tombola Carlo, Balestrini Massimo, Bovo Elisabetta, Anna Tedesco

Eligibility: Open to all artists

Fees: €30

Commission: 30%

(Continued next column.)

Exhibits to Show

1st International Donkey Art Prize Modern and Contemporary Art Competition (Continued)

Mail: Blindonkey Cultural Association

c.f. 03921350231

Porta Nuova st. 127, 37122 Verona, Italy

E-mail: info@donkeyartprize.com

Website: www.donkeyartprize.com

Prospectus: www.donkeyartprize.com

MGAL National Juried Exhibition

Memphis, Tennessee

Deadline: January 5, 2011

Exhibit Dates: March 5-30, 2011

Sponsor: Memphis Germantown Art League

Venue: WKNO Gallery

Awards: \$7500 in cash, merchandise & purchase selections

Juror: Lori Putnam

Eligibility: artists 18 yrs old or older from all of the United States, two-dimensional art **Fees:** members \$30, non-members \$40

Commission: None

E-mail: Kay Coop rkcoop@ensafe.com

Phone: (901) 685-5628

Website: www.mgal.org

Prospectus: www.mgal.org

Embracing Our Differences

Sarasota, FL

Entry Deadline: January 10, 2011

Exhibit Date: April - May, 2011

Venue: Island Park along Sarasota, Florida's beautiful bay front
Awards: \$3,000 in prize money. Best In Show (Adult) \$1,000, Best In Show (Student) \$1,000, People's Choice \$1,000

Jurors: 3-judge panel of professional artists, curators and art professionals

Eligibility: Artists, photographers, professionals, amateurs, teachers, students – all ages – everyone can participate. You may submit more than one entry; however, no more than two images per artist will be chosen

for display

Fees: None

Mail: Embracing Our Differences

P.O. Box 2559

Sarasota, FL 34230-2559

Telephone: (941) 928-0567

E-mail: MichaelJShelton@comcast.net

Website: www.embracingourdifferences.org

Prospectus: www.embracingourdifferences.org/pdfs/2011calltoartists.pdf

IAPS Upcoming Exhibitions

The 2011 Convention - Poster Competition - 2011 Convention Poster

Deadline: February 1, 2011

Prospectus/Entry Form:

www.pastelinternational.com/CONVENTIONS/new-ninth-conv/poster-comp-11.pdf

The Eighteenth Juried Exhibition - 2011 Convention Exhibition

Deadline: March 30, 2011

Prospectus/Entry Form:

www.pastelinternational.com/CONVENTIONS/new-ninth-conv/Conv-show-11.pdf

The First Master Circle Exhibition - 2011 Convention Exhibition

Open to IAPS Master Circle Members

Prospectus/Entry Form:

www.pastelinternational.com/CONVENTIONS/new-ninth-conv/mc-exhib-11.pdf

Appalachian Pastel Society Membership Application

Name _____

Address _____

City _____ State _____ Zip _____

Telephone _____ AltTelephone _____

Email _____ Website _____

Renewing member _____ New Member _____

Artist ____ Art Supporter ____

Committee Interests:

Exhibitions ____ Programs ____ Hospitality ____
Telephone ____

Newsletter ____ Membership ____ Clerical ____
Workshops ____ Other _____

Awards/Experience/Comments/(or, what are your expectations from APS):

Please include a check made payable to "APS" in the amount of \$25 for membership for one year.
APS membership year starts September 1st.

Send to: Kay Gordon
APS Membership Chair
2016 Upper Paw Paw Road
Marshall, NC 28753

More information: www.appalachian-pastel-society.org
Or contact Kay at: kgordon@main.nc.us
828.649.3363 or 828.206.0240