

Appalachian Pastel Society

September 2007

Appalachian Sunset - Kay Gordon

Board of Directors

Officers

President - Karen Chambers
Vice President - Beverly Kies
Secretary - Nancy Clausen
Treasurer - Robbins Richardson

Committees

Directory:

Pam Potter

Exhibitions:

Kay Gordon
Fran Greenberg
Al Junek
Suzanne Kamatz
Mary Robinson
Merritt Roach

Finance:

Denise Geiger

Programs:

Denise Geiger
Nancy Clausen

Publicity:

Kay Gordon
Connie Vlahoulis

Telephone:

Joan Engle
Pat Spangler

Workshops:

Suzanne Doddridge
Coleen Hester
Al Junek
Suzi Kamatz

Letter from the President

I hope you have had a good and eventful summer. It has been for me. After returning from a trip to Southern France through the Swiss Alps to Provence (Arles, Aige Morte, the lavender fields, olive orchards, vineyards, and national parks), I am ready to get started on this year. How about you? Don't forget to mark your calendars that our meetings are on the second Saturday of every other month beginning in January and our year starts with September. Our dues are \$25 and due in September. Our annual juried exhibition is held in November.

Our next meeting on Saturday, September 8, will be held at the Swannanoa Valley Fine Art League Studio at 999 Old Highway 70 in Black Mountain, NC. It promises to be fun and very informative. We are going to be doing a Paint-a-Round where everyone gets to work on a painting with others. We are going to have a number of easels set up, each with a different type of pastel paper, and pastels sitting nearby to use, and everyone gets to try them out. This will help us decide which paper best suits our needs, pocketbook, and ability. We asked each person who can or has extra to bring a sheet or piece of a type of pastel paper for everyone to try. I am going to try to get a Pastel sample set or two from Dakota Pastel. You might even bring a photo that you think will be fun for us to try. Let's bring lunch (or at least those who can stay) and get to know one another afterwards. If you want, bring something for critique (it doesn't have to be new). Who knows, we might want to sell these paintings?! Hmmm!!

Last month's meeting, hosted by Kay Gordon and Denise Geiger was not only informative about the IAPS (International Association of Pastel Societies) but also about the workshops and seminars they attended. Each of them talked about their experiences and shared the photos they had taken of New Mexico. Kay had hers set up in a slide show on a disc. She and her husband traveled around New Mexico for a month after the convention. The meeting included a lot of laughter and was so much fun that it ran overtime. Imagine a group of artists having that much fun! It made us think that maybe, not too far in the future, we should plan a group painting trip to NM. What do you think? We would stay at the same hotel, paint out each day, and come back for dinner and then look at each other's paintings.

You will be called in the next few weeks and be asked to sign up for a committee. Please be thinking of a way in which you think you could best contribute to APS. We need your help and input. Our annual juried exhibition is coming up soon. It's time to get your paintings ready. It will be originals only. The guidelines, dates, times, and fees are all included in the prospectus on page five of the newsletter. There are too many prizes to be mentioned, including sets of pastels, paper, etc. Please sign up with Kay Gordon to help. She will need all the help she can get. I will also be there to help.

Karen Chambers
APS - President

News and Happenings

Meetings and Events

An Inspirational Urban Legend

Appalachian Pastel Society (APS) Meeting

The APS meeting will be held Saturday, September 8, 2007, from 10 am - 12 noon, at the Swannanoa Valley Fine Art League Studio, at 999 Old Highway 70 in Black Mountain, NC.

After the regular business meeting we will be doing a Paint-a-Round. We will have a number of easels set up, each with different type of pastel paper for use. Everyone gets to try everything out. This will help you decide what best suits your needs, pocketbook, and ability.

APS Second Juried Art Exhibition

Come to the September meeting of APS to hear about and see some of the wonderful awards that have been collected for this year's APS Exhibition. Kay Gordon brought back several very nice pastel sets from the IAPS Trade Show in Albuquerque. Other pastels and pastel products have been promised.

The Second Juried Art Exhibition of the Appalachian Pastel Society will be held at the Grace Centre in Fletcher, NC. Hand delivery of paintings will be Friday, November 2nd from 9am to 11am or Saturday, November 3rd from 9am to 11am. Judging will be done on the original paintings Saturday afternoon.

The reception and show opening will take place Saturday evening, November 3rd, and will start at 7:00pm. Awards will be presented at 7:30.

The entry fee is \$15 for members and \$20 for non-members. The fee is payable when the paintings are submitted. One entry is allowed per artist. Declined artwork notifications will be made by 3pm. Declined artwork can be picked up after 3pm on Saturday or pickup time arranged at a later date. Sales are encouraged but not required.

Members had an opportunity to meet our show judge, Luana Luconi Winner, at her demonstration and workshop at the March APS meeting. Luana is a founding member of the Portrait Society of America. She was schooled in Rome, Florence, Switzerland, and currently resides in Raleigh, NC. We are privileged to have this nationally recognized artist and educator to judge our show. For more information about Luana, and to view her artwork, visit her website, www.WinnerStudios.com

A prospectus for the show is on page five this newsletter, and is available in printable form on the APS website.

We are going to need much help with the show hanging and reception. Please call to offer your help! Everyone entering the show will be expected to bring their favorite cookies, cakes, cheeses & crackers, or veggie platters to the reception. Drinks will be provided by APS.

For additional information, requests for mailed copies of the prospectus, and offers to help with the show, please contact Kay Gordon at (828) 649-3363 or kgordon@main.nc.us

On Nov. 18, 1995, Itzhak Perlman, the violinist, came on stage to give a concert at Avery Fisher Hall at Lincoln Center in New York City. If you have ever been to a Perlman concert, you know that getting on stage is no small achievement for him. He was stricken with polio as a child, and so he has braces on both legs and walks with the aid of two crutches. To see him walk across the stage one step at a time, painfully and slowly, is an awesome sight. He walks painfully, yet majestically, until he reaches his chair. Then he sits down, slowly, puts his crutches on the floor, undoes the clasps on his legs, tucks one foot back and extends the other foot forward. Then he bends down and picks up the violin, puts it under his chin, nods to the conductor and proceeds to play.

By now, the audience is used to this ritual. They sit quietly while he makes his way across the stage to his chair. They remain reverently silent while he undoes the clasps on his legs. They wait until he is ready to play. But this time, something went wrong.

Just as he finished the first few bars, one of the strings on his violin broke. You could hear it snap - it went off like gunfire across the room. There was no mistaking what that sound meant. There was no mistaking what he had to do. We figured that he would have to get up, put on the clasps again, pick up the crutches and limp his way off stage - to either find another violin or else find another string for this one. But he didn't. Instead, he waited a moment, closed his eyes and then signaled the conductor to begin again.

The orchestra began, and he played from where he had left off. And he played with such passion and such power and such purity as they had never heard before.

Of course, anyone knows that it is impossible to play a symphonic work with just three strings. I know that, and you know that, but that night Itzhak Perlman refused to know that.

You could see him modulating, changing, re-composing the piece in his head. At one point, it sounded like he was de-tuning the strings to get new sounds from them that they had never made before. When he finished, there was an awesome silence in the room. And then people rose and cheered. There was an extraordinary outburst of applause from every corner of the auditorium. We were all on our feet, screaming and cheering, doing everything we could to show how much we appreciated what he had done.

He smiled, wiped the sweat from this brow, raised his bow to quiet us, and then he said - not boastfully, but in a quiet, pensive, reverent tone - "You know - sometimes it is the artist's task to find out how much music you can still make with what you have left."

What a powerful line that is. It has stayed in my mind ever since I heard it. And who knows - perhaps that is the definition of life - not just for artists but, for all of us. Here is a man who has prepared all his life to make music on a violin of four strings, who - all of a sudden - in the middle of a concert, finds himself with only three strings; so he makes music with three strings, and the music he made that night with just three strings was more beautiful, more sacred, more memorable, than any that he had ever made before, when he had four strings.

So, perhaps our task in this shaky, fast-changing, bewildering world in which we live is to make music, at first with all that we have, and when that is not possible, to make music with what we have left.

News and Happenings

News About Members

APS Members in SVFAL Exhibition

Congratulations to APS Members whose paintings were accepted into the juried Swannanoa Valley Fine Arts League's 40th Annual Members Exhibit. Suzanne Doddridge received Best Of Show with her pastel, "NC Tug," and 3rd Place in the Pastel Division with, "Quiet Evening Light." J. Kay Gordon received 2nd Place in the Pastel Division with "Winter Reverie." Susan Sinyai received 2nd Place in the Oil Category with, "Chinese Teapot & Winter Scarf."

Other APS members whose paintings were accepted into the show are Nancy Clausen, Denise Geiger, Frances Greenberg, Mary Robinson and Bea Russell.

APS was well and ably represented. The Exhibition was at the Tyson Library, Black Mountain, from August 6th through August 17th.



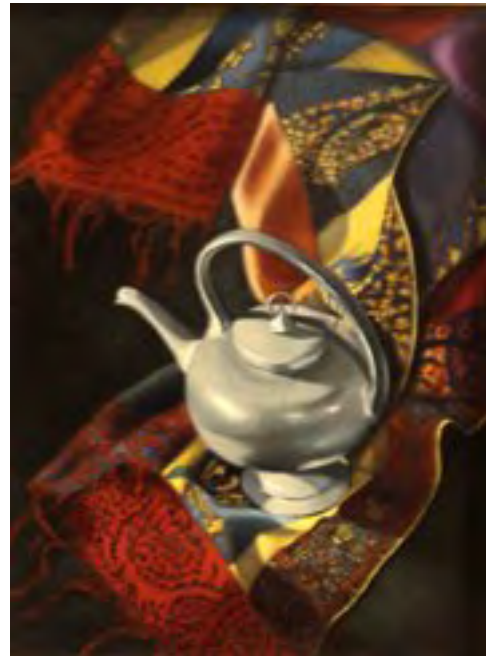
"NC Tug" - S.Doddridge - Best of Show



"Quiet Evening Light" - S.Doddridge
3rd Place Pastel



"Winter Reverie" - J. Kay Gordon - 2nd Place Pastel



"Chinese Teapot & Winter Scarf" - S. Sinyai - 2nd Place Oil

Workshops/Classes

Open live model studio at Swannanoa Valley Fine Art League

Fran Greenberg runs an open studio portrait session at the Swannanoa Art League Studio on Monday from 1:00 to 4:00. We have one model, one pose and short breaks every 20 minutes. It's free except we split the model's fee. She also runs the figure drawing session on Friday from 10:00 to 1:00. There are multiple poses for this session. For more information please contact Frances Greenberg 225-9524 francesgreenberg@netscape.net or see the Swannanoa Valley Fine Art League web site at www.svfal.org.

Pastel Society of North Carolina Workshop

PSNC is holding a workshop in October featuring nationally known pastelist Greg Biolchini. They are opening enrollment now to anyone who is not a PSNC member. They have a handful of slots open for the workshop. A full registration packet will be sent upon enrollment.

See page seven for more details and an enrollment form.

Appalachian Pastel Society

Meeting Minutes

July 14, 2007

Our president Karen Chambers called our meeting to order at 10:00 at the Black Mountain Library.

It was announced that the Swannanoa Valley Fine Art League is sponsoring a workshop with Deborah Squires. The dates are August 7 and 8, from 10:00 to 4:30. The cost is \$200.00. You can pre register by sending Denise Geiger \$25.00. Deborah will take students to a site in the morning to sketch and then in the afternoon will go back to the studio to paint. She will give a workbook at the end of the workshop.

We welcomed Colleen Hester back.

A sign in sheet has been placed in the back of the room for members to sign in.

Our dues are due in September. They are \$25.00.

Mary Robinson moved to approve the minutes. Pam Potter seconded them.

Beverly Keyes has asked that we consider moving the meetings from Saturday to a weekday. We also had discussion that perhaps we should have monthly meetings instead of bimonthly ones. Perhaps some of the meetings could be plein air painting get togethers.

We've had a change of venue for the September meeting. Since our speaker could not make the meeting, Mary suggested that we meet at the SVFAL building and bring in different types of papers to try out. We should also bring money to defer the cost.

Nancy may not be able to be at the September meeting. Pam Potter said she would take the notes for her.

Karen then brought the subject of new officers and program chairs for next year. Connie V. volunteered to do PR again and will be our Vice President. We need at this time Treasurer, Meeting Coordinator, and Program Chairs.

We then had a report from our Exhibition Committee, Kay Gordon and Mary Robinson.

Our show at the Grace Centre is the first Saturday in November (This has now been changed, see article on page two). The delivery of paintings, jurying and hanging the show will all be done in one day as there is a shortage of storage space. Our reception will coordinate with the program of the church that night.

The show is an open show whereby it will be open to nonmembers as well as members. The non members will have to pay a higher fee. One painting per person and anyone bringing a painting will also bring something for the reception. Grace will accommodate us in regard to sales. Denise will be doing the PR. The prospectus will be on our website as well as in the SVFAL letter. I made a suggestion to put our information on the wire instead of taping it to the back of the painting. (Continued next column)

Meeting Minutes (Continued)

We will need a table to display a bio. Perhaps could do a book mark or some type of business card. We could use Kay's painting which appears on our newsletter. We have 3 sets of pastels, a certificate for another and more prizes coming in.

Kay said that even though she was stepping down as Exhibition Chair, she has already started to plan for next year, as every exhibition committee needs to do. We are up for discussion again at the Black Mountain Center for the Arts. Also the Hendersonville Gallery may let us exhibit there and that should be free space. Connie's studio may be interested in having a non juried show in the spring. She takes 20% commission. That would possibly be in April with a demonstration included.

Karen mentioned that she had brought some samples of pigments back from France. They would be at the back of the room if we would like to see them.

Many thanks to Connie for her work in welcoming our new members with letters to them and in being so active in the membership.

According to Mary there is a new gallery at the Arboretum. They might be interested in us showing our work there.

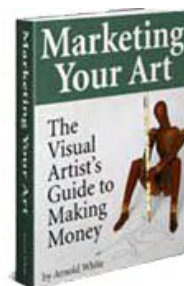
If Hendersonville comes through for our Fall show we voted to commit. This is for the year 2008.

After a short discussion of exhibition sales, gallery studios etc., we adjourned for the presentation by Kay and Denise on their experiences at the IAPS convention and afterwards.

Respectfully submitted,
Nancy Clausen - APS Secretary

Exhibitions and Newsletter Submission Dates

If you know of any exhibitions coming up, especially those within 3-4 hours of Asheville, let us know. Please allow enough lead-time (at least a month) for publication.



Get a Free
"Marketing Your Art"
eBook
[Art Websites by Webtoady.com](http://www.Webtoady.com)

Appalachian Pastel Society

P.O. Box 1182, Asheville, NC 28802
SECOND JURIED ART EXHIBITION
Grace Centre, Fletcher, NC
November 3rd – December 1st, 2007

- Prospectus -

ELIGIBILITY

- Open to all artists.
- Artwork must be at least 60% soft pastel. Nupastels and similar “harder” pastels are considered soft pastels. Oil pastels are not considered soft pastels.
- Artwork must be original, not more than 3 years old, not done in a class or under supervision of another artist, and not copied from published photos or from photos taken by others without their permission.
- Artwork must be wired and ready for hanging. No clip frames, sawtooth hangers, or string hangers permitted.
- Due to limited space, works may not exceed 40 inches in either direction including frame.
- Work accepted at discretion of show chair and judge, including subject matter and presentation.

ENTRY DETAILS

- One painting may be submitted per artist.
- All entries will be hand delivered to Grace Centre and juried from the originals.
- If possible, please have entry forms filled out ahead of time and appropriate form attached to back of artwork, or taped on the wire if desired.
- Entry fee of \$15 for members and \$20 for non-members to be paid when painting delivered. Non-members may join at the time of entry. APS membership is \$25 and is from September to September. Checks should be made out to APS.
- Sales are encouraged. Works “not for sale” marked NFS on entry form. A 10% Gallery Fee will be charged by the Grace Centre. An additional 20% commission will be charged by APS.
- APS reserves the right to photograph any submitted artwork for publicity or archival purposes.
- Grace Centre’s insurance covers a minimal amount. Artists should provide more coverage if desired. Grace Centre and APS shall not be held responsible for any damage or loss, although every effort will be made to protect artwork.

SHOW JUROR AND JUDGE

All artwork submitted will be juried prior to hanging. Artists will be notified by phone by 3 pm if their work is not accepted. The show will be juried and judged by Luana Luconi Winner. Luana is a founding member of the Portrait Society of America. She was schooled in Rome, Florence, Switzerland, and currently resides in Raleigh, NC. We are privileged to have this nationally recognized artist and educator to judge our show. For more information about Luana, and to view her artwork, visit her website, www.WinnerStudios.com

AWARDS

Ribbons will be awarded for Best of Show, 1st, 2nd, and 3rd places, and Exceptional Merit Awards and Honorable Mentions at the discretion of the judge. Some fabulous prizes have already been donated. Prizes include Cretacolor, Sennelier, Mount Vision and Great American Artworks pastel sets. Many other pastel and art companies have promised prizes as well.

LOCATION

Grace Centre, 495 Cardinal Road, Fletcher, NC 28753. Phone 828.891.2006. www.graceinfo.org
Cardinal Road is off of Airport Road, a short distance west of the Asheville Airport in Fletcher. (Continued page 6.)

CALENDAR

Delivery can be done Friday or Saturday. Judging and hanging will all take place on Saturday. Paintings not hung may be picked up before or during the Reception on Saturday or may be stored at the Centre and pickup time arranged.

- Hand Delivery Friday, November 2nd, 2007 9 am to 11 am
Saturday, November 3rd, 2007 9 am to 11 am
- Judging Saturday, November 3rd, 2007 12 noon
(Declined will be called before 3 pm)
- Hanging Saturday, November 3rd, 2007 2 pm
(Hanging committee please report by 1:30 pm)
- Reception Saturday, November 3rd, 2007 7 pm
(Awards will be announced at 7:30 pm)
- Show End - Pick-up Saturday, December 1st, 2007 10 am to 4 pm

RECEPTION

All artists are encouraged to attend the awards reception. The judge will be at the reception. Copies of the judge's notes will be made available to the entrants.

Please sign up to bring your favorite cookies, cakes, cheeses & crackers, veggie platters. Sign-ups will be done at delivery of paintings. Drinks will be provided by APS.

Kay Gordon (h 828.649.3363; c 828.206.0240)
kgordon@main.nc.us
Exhibition Chairperson

PLEASE FILL OUT THE FOLLOWING FORMS TO SUBMIT WITH ENTRY:

JUROR CARD

Name _____
Street _____
City _____ State _____ Zip _____
Phone _____ Cell phone _____
E-mail _____
Title _____ Price _____

I agree to all provisions of the exhibition.

Signature: _____

ATTACH TO BACK OF ARTWORK

Name _____
Street _____
City _____ State _____ Zip _____
Phone _____ Cell phone _____
E-mail _____
Title _____ Price _____

REGISTRATION FOR GREG BIOLCHINI WORKSHOP

Dates: **October 19, 20, 21**

Location: **Crawford Farms – Alamance County**

(not far from Chapel Hill and Greensboro)

Cost: **\$300.00**

The Pastel Society of North Carolina has been fortunate enough to secure Mr. Greg Biolchini for a three day workshop. Participation is now open to any pastelists, whether you are a member of PSNC or not.

This workshop with nationally known master pastelists Greg Biolchini will be a three day affair, plein air, (weather permitting) and will run from 9:00 AM to 4:00 PM every day. In addition to the beautiful grounds and natural setting of the farm, Mr. Biolchini will provide a model that can be painted (optionally) into the open air subject matter.

Each day will begin with a two hour demonstration by Mr. Biolchini. Questions are encouraged. Individual instruction will be given during the painting session for the participants. There will be a critique on the last day.

A full packet of information (location directions; suggested materials) will be sent to you upon receipt of your registration. Registration is now open to any pastelists who would like tutelage by Mr. Biolchini. We have a few openings left, but expect this to be a sold out workshop soon. Maximum number of participants is 15.

Registration will close on September 25, 2007.

**PSNC assumes no liability for damage done by painters nor any liability for injury or death to painters participating in this workshop. **

Name: _____

Address: _____

Phone Numbers:

Home _____ Work _____

Cell _____

Email address: _____

Payment in full required with registration. Send your **check & registration** form to:

Lori White
4600 Wellington Downs
Raleigh, NC 27613

Checks should be payable to Pastel Society of North Carolina.

APS September 2007

Appalachian Pastel Society Membership Application Form

Name _____

Address _____

City _____ State _____ Zip _____

Telephone _____ E-Mail _____

Artist _____ / Art Supporter _____

Areas of Interest

Committee Interests:

Exhibitions___ Programs___ Hospitality___ Telephone___

Newsletter___ Directory___ Clerical___ Other___

Awards / Experience

Please include a check made payable to the Appalachian Pastel Society in the amount of \$25 for membership for one year - September-September.

Appalachian Pastel Society
P.O. Box 1182
Asheville, NC 28802