



APS Events Calendar

*For Details
Click Event Date*

September 11, 2010 Paul deMarrais Demonstration
October 15 - 17, 2010 9 am-4 pm Ann Templeton Workshop
October 20 - November 13, 2010 APS Second National Juried Exhibition
October 22, 2010 6pm-8pm APS 2nd National Exhibition Opening Reception

Letter from the President

As my two year stint as President of APS comes to an end this month, I can happily say I have enjoyed serving this organization. We have grown so much in the past few years, and we are constantly learning how to make our group even better. With the help of my wonderful board members, this job has not been very difficult. We have existing board members and some new ones ready to step in for the next year.

We are looking forward to our second National Exhibition being held in Waynesville at the Gallery of the Arts Council of Haywood County. I hope everyone will attend the reception on October 22 whether you are in the show or not. It is a great opportunity to see the best of pastel art, and to support your fellow artists. Also, a little wine and good food always makes for a good time!

Our next meeting will be September 11 at the Black Mountain Center for the Arts (due to the state fair being held at the Ag Center). Paul deMarrais will be back with a wonderful presentation called "The Limited Palette," talking about the colors we really need to do a painting and the colors we can do without. We will also be voting on our new officers for 2010-2011, and announce our committee chairpersons as well.

Thank you all so much for your support. I value the friendships I have made in this group.

Your President,
Beverly Kies

In This Issue...

**Page 2... Meetings
Events**

Page 3... Member News

**Page 4... Artist of
The Month**

**Page 5... Exhibitions
and Competitions**

Page 8... Workshops

**Page 9... APS
Meeting Minutes**

**Page 10... APS Member
Application**

Board of Directors

Officers

President - Beverly Kies
Vice President - Pam Potter
Secretary - Marian Sinks
Treasurer - Susan Sinyai

Committee Chairpersons

Membership & Communications:
Kay Gordon

Exhibitions:
Karen Chambers
Nancy Clausen

Programs:
Karen Wylie

Publicity:
Pam Potter

Hospitality:
Gail Wheeler

Workshops:
Karen Wylie

Library:
Mary Robinson

Exhibitions and Newsletter Submission Dates

If you know of any exhibitions coming up, especially those within 3-4 hours of Asheville, let us know. Please allow enough lead-time (at least a month) for publication.

APS Meeting

The Appalachian Pastel Society general meeting will be at the Black Mountain Center for the Arts, 225 W State St, Black Mountain, NC, Saturday, September 11, 2010 at 10: am.

Please make a note of the meeting location change as the change is for this month only! *(The meeting occurs during the ten days of The Mountain State Fair held on the Western North Carolina Agricultural Center grounds, and our usual building is not available.)*

Be sure to attend this meeting! We will be voting on next year's slate of officers.

Demo and Discussion 10:30-12:00

Paul deMarrais will present an informative program on "**The Limited Palette.**" Strong paintings can be done in pastel with far fewer colors than what many artists believe are essential. Paul will talk about the colors you REALLY need, colors you can happily do without, and strategies you can use to boost the color in your paintings. In addition to his exquisite hand made pastels, there will be limited palette pure color pastel sets on sale. These are exceptional pastel sets made by Paul at the request of APS.

APS Officer Nominees (Oct. 2010 - Sept. 2011)

President: Kay Gordon
Vice President: Annette Winters
Secretary: Marian Sinks
Treasurer: Susan Sinyai

Committee Volunteers

Nominations: Leigh Condie
Membership: Kay Gordon
Annual Juried Exhibition:

Karen Wylie
Kate Thayer

Non-juried Exhibitions:

Nancy Clausen
Karen Chambers

Programs/Mini-Workshops: Gail Wheeler

Publicity: Carol Morrow

Hospitality/Meetings:

Coleen Meecham
Marnie Michaels
Sheryl Daniels

Library:

Mary Robinson
Fran Greenberg

Paint-outs: Susan Voorhees

Newsletter:

Ed Hunting
Meredith Adler

Website: Ed Hunting

APS Events

Directions

Black Mountain Center For The Arts



Take I-40 to
Exit 64 (Black Mountain).
Turn North onto Hwy 9 into town,
turn left on W. State St. Black Mountain Center
For The Arts is one and one half blocks on the left.

225 W State St,
Black Mountain, NC 28711
www.blackmountainarts.org
(828) 669-0930

Thank You!

- Luana Luconi Winner

Thank you so much for permitting me to share some thoughts on art and pastel painting with the Appalachian Pastel Society. It was a pleasure to spend the day with such a lovely group of artists. I was so pleased to meet so many artists at the meeting/demonstration, and I thought that for those members who were unable to make the meeting, they might like to see the results of the demonstration.

Since we were talking about the "Color of People," my three 20-30minute demos were created to help explain the color palette changes that might take place as we work from one person to another. Members of the audience were wonderful to volunteer.

Here are the results on 20 x 16 Ampersand Pastel Board.



I hope to see you all again sometime soon!

Best wishes and happy painting,
Luana Luconi Winner

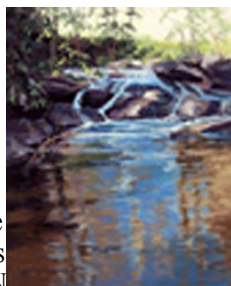
Member News

New Members

Stephanie Thomas Berry, Burnsville, NC
Ron Maffett, Asheville, NC
Kathryn Wilson Raleigh, NC
Jean Kayrell W. Compton Danville, VA

Accolades

Kate Thayer's pastel painting, "Tango," was accepted in the South-eastern Pastel Society International Exhibition in Atlanta, GA.

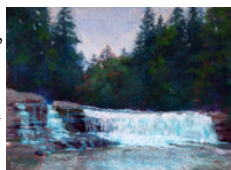


"Tango"

Kate is also the feature artist at Twigs & Leaves Gallery, located at 98 N Main St. in Waynesville, NC

The show, entitled "Celebrating Summer's End," runs September 3, 2010. Everyone is invited to join the reception for food and music from 6 to 9 pm.

Edward Morris's pastel painting, "Hooker Falls," won first place in the Arts Council of Henderson County, "Bring Us Your Best," show.



"Hooker Falls"

Kay Gordon's painting, "Opal Morning," was judged first place in pastel in the SVFAL 43rd Annual Member Exhibition. The Exhibition ran through August 16 at Tyson Library, Black Mountain, NC.



"Opal Morning"

Nancy Clausen's painting "Raging River," was juried into the Visual Art Exchange N.E.W. (never exhibited work) show in Raleigh, NC at 325 Blake Street.



"Raging River"

The show starts September 3 and runs through to the end of the month.

APS Membership Renewal

The APS membership year starts on September 1, 2010. Have you renewed? If you are not sure, or if you have other membership questions, please contact me.

We have an exciting year in store for the remainder of 2010 and for 2011. Our new program chair is continuing the tradition of excellent meeting demos and "mini-workshops." Watch for details in APS newsletters.

APS meetings are open to the public but only current members may attend the mini-workshops.

Plans for this fall also include the National Juried Show and accompanying workshop.

Only current members can begin earning points toward the newly established Special Membership Levels of APS.

APS member meetings are held the second Saturday every other month, starting with January. Programs at the meetings include guest demonstrations and member participation activities.

In addition to the member meetings, APS offers "painting-gatherings" on the second Saturday of the months not having regular meetings. The intention of these get-togethers is to paint together with other pastelists. Often such meetings will have a brief informal demo or topic of discussion. When the weather is suitable, plein air sessions are planned.

Don't miss these opportunities. Send your \$25 check with the Membership Application that appears at the end of this newsletter.

Kay Gordon
APS Membership Chair
2016 Upper Paw Paw Rd
Marshall, NC 28753
kgordon@main.nc.us
828.649.3363

APS LIBRARY

Full length DVD's:

"Painting Outdoor Shadows in Pastel" with Derorah Secor - 60+ minutes

"Get Started in Pastels: Deborah Secor Paints the Landscape" - 60+ minutes

"Pastel Journal" All 2006 Issues on one disc. Searchable and Printable

Article DVD's:

"Wade Into Water" - An article from The Pastel Journal

"Clouds" - An article from The Pastel Journal

Pastel Journal Magazines

VHF Videos:

"Pastel Techniques" - Barry Watkins - 60 minutes

"Progressing With Pastel" - Barry Watkins - 60 minutes

BOOKS:

"Pastels" - Margaret Evans

"Painting with Pastels" - Maggie Price

"Painting Children" - Bev Lee

Painting Beautiful Skin Tones with Color and Light in Oil, Pastel and Watercolor" - Chris Saper

Library Rental policy:

1. APS membership required
2. Fee per checked out item: \$5.00
3. Rental time: 2 months - from one meeting to the next
4. Late Return: an additional \$5.00 per item is due.

If you have suggestions for books and/or DVD's, or would like to donate to the library, please contact Mary Robinson - sailmary@gmail.com or call 828.625.0450.

Custom Built Web Sites For Artists

One Year Free Domain
One Year Free Hosting
Free Image Prep

Starting at just \$99.95

www.website-design-webpage-design.com

828-625-0450

APS

Artist of The Month

Jim Hefley



Jim Hefley has been an active outdoorsman for many years. He combines his love of the beautiful streams and mountains of Western NC with his passion for painting. Many of his paintings feature a beautiful mountain stream with a fly-fisherman actively pursuing trout. His trout fishing painting series features streams in WNC National Forests and the Great Smoky Mountains National Park. He also paints landscapes displaying beautiful Appalachian mountain vistas and spectacular waterfalls.

Jim lived and worked in Europe for a number of years. During his residency there, he developed a real appreciation for the countryside fields, farmhouses, and villages in several countries throughout Europe. He has created a number of European landscapes including some very colorful paintings of lavender fields in Provence, vineyards and villas in Tuscany, and barges on the canals of France and England.

Jim creates art for galleries and shows; he also does commission landscape paintings. Since clients may choose their own landscapes, the paintings have special meaning to the client and are unique to them. Jim's commission paintings are very special and very diverse in subject matter.

Jim generally paints in a representational style, but also likes to create some paintings in a more impressionistic style if the scene and the light encourage that approach. He has painted with and taken workshops from prominent Southeastern artists John Mac Kah, Peggy Taylor, Deborah Squier, Mikki Dillon, Sarah Sneed, and Julyan Davis.

As an active member of Trout Unlimited, Jim devotes volunteer time to support a number of their programs. He also donates a portion of the proceeds from all sales of his paintings to help send disadvantaged boys and girls to the annual NC Trout Unlimited Youth Camp.

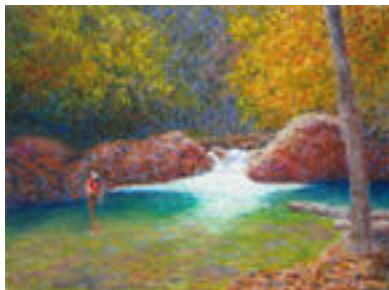
To learn more about Jim and his artworks, please view his web site at www.jimhefley.com
Contact: Telephone: (828) 277-9465 E-mail: Jim.Hefley.Fine.Art@charter.net



Palmer Chapel 1904



Misty Day on Roan Mtn.



Midnight Hole



Lavender Field in Provence



Monet's House and Flowers

Exhibitions and Competitions

Carolina's Got Art!

Charlotte, NC

Entry Deadline: August 30, 2010

Exhibit Date: October 1-30, 2010

Awards Presentation: Friday October 1, 2010 7:00 pm

Venue: Elder Gallery

15 1427 South Boulevard

Charlotte, NC 28203

Phone: (704) 370-6337

Awards: \$10,000 in cash and prizes: Best in Show: \$2,500, 1st Place: \$2,000, 2nd Place: \$1,500, 3rd Place: \$1,000, Honorable Mention – \$500 value gifts

Juror: Mario Naves

Eligibility: Open to artists, professional or amateur, who reside in North or South Carolina

Fees: \$35 (up to 3 pieces)

Commission: 40%

E-mail: info@carolinastart.com

Website: www.carolinastart.com

Prospectus: www.carolinastart.com

Fabrik Magazine

International Juried Competition

Publication

Entry Deadline: August 31, 2010

Exhibit Dates: November 20 – December 18, 2010

Sponsor: Fabrik Magazine

Venue: Fabrik Magazine print edition, online edition, and The Factory Gallery in Los Angeles, CA.

Awards: Total value of prizes \$10,000

First Prize: 1 Winner

- Editorial Profile and Feature in Fabrik Magazine
- Print Edition
- Inside Back Cover, Full Page Ad in Fabrik Magazine
- Premium Ad Position
- Exhibition at The Factory Gallery, Downtown Los Angeles
- Email Exposure to 30,000 Interior Designers, Art Consultants and Galleries who are seeking art
- Online "Artist Spotlight" Feature
- Website link

Second Prize: 2 Winners

- Full page ad in Fabrik Magazine
- Group Exhibition at The Factory Gallery, Downtown Los Angeles
- Email Exposure to 30,000 Interior Designers, Art Consultants and Galleries who are seeking art
- Online "Artist Spotlight" Feature
- Website link

Third Prize: 5 Winners

- Online "Artist Spotlight" Feature
- Group Exhibition at The Factory Gallery, Downtown Los Angeles
- Email Exposure to 30,000 Interior Designers, Art Consultants and Galleries who are seeking art
- Website link

Jurors: Robert Berman, Director, Robert Berman Gallery @ Bergamot Station in Santa Monica
Peter Frank, Art Critic and Senior Curator, Riverside Art Museum
Hossein Farmani, Founder/President, International Photography Awards (Lucie Awards)
Michelle Berc, Art Consultant and Founder/Curator of Create:Fixate
Chris Davies, Publisher and Curator
Dale Youngman, Artist Liaison, Fabrik Magazine and Gallery Director at The Factory

Eligibility: Open to artists in all media

Fees: \$30 (up to 3 images), 4-6 images: \$50, 7-9 images: \$65

E-mail: contest@fabrikmagazine.com

Website: www.fabrikmagazine.com

Prospectus: www.fabrikmagazine.com/content/juried-competition/

Online Registration: www.fabrikmagazine.com/content/juried-competition-registration/

The Pastel 100

Publication

Entry Deadline: September 1, 2010

Exhibit Date: April 2011 issue of The Pastel Journal

Sponsor: F+W Media, Inc.

Venue: The Pastel Journal

Awards: Best of Show \$5,000 Cash,

Grand Prize \$2,500 Cash

Over \$10,000 in other cash and merchandise awards

70 Hon. Mentions-Image and information about each painting will be published in The Pastel Journal.

Categories & Jurors

Landscape/Interior Brian Cobble

Still Life/Floral Claudia Seymour

Abstract/Non-Objective Colette Ody Smith

Portrait/Figure Alan Flattmann

Animal/Wildlife Cindy House

Eligibility: Open to artists 16 years old or older Work must be at least 80% soft pastel; no oil pastel. Nupastels and other "harder" pastels are considered soft pastels.

Fees: \$20 per image

Commission: None

Mail: ATTN: Competitions Dept.

Pastel 100

4700 East Galbraith Road

Cincinnati, OH 45236

Download printable entry form:

www.artistsnetwork.com/upload/images/competitions/2010%20PJ%20100%20entry%20form.pdf

Online Application:

https://competitions.fwmedia.com/dynamiccompetition/2010pastel100/entry_form

Website: www.artistsnetwork.com/thepasteljournal

Prospectus: www.artistsnetwork.com/pasteljournalcompetition

"You've Got the Magic Dust"

Alabama Pastel Society Juried National Exhibition

Birmingham, AL

Entry Deadline: September 8, 2010

Exhibit Date: October 4-28, 2010

Sponsor: Alabama Pastel Society (Ph: (706) 454-2161)

Venue: Jennifer Harwell Gallery

Birmingham, AL

Awards: \$1000 Best of Show plus other cash & merchandise awards

Juror/Judge: Greg Biolchini, PSA

Eligibility: Soft Pastels only

Fees: APS-E. Members \$30, non-members \$35. 3 images max.

Mail: Alabama Pastel Society

P.O. Box 118

Trussville, AL 35235

E-mail: Fran "RainDance" Hampton raindancedeer@yahoo.com

Prospectus: www.appalachian-pastel-society.org/ALPstlScty_prspcts.pdf

Allied Artists of America

97th Annual National Exhibition

New York, NY

Entry Deadline: September 13, 2010

Exhibit Date: November 12-30, 2010

Reception/Awards: Sunday November 28, 2010 1:00 pm

Sponsor: Allied Artists of America

Venue: National Arts Club Galleries

15 Gramercy Park South

(20th St. between 3rd and Park Aves.)

New York, NY 10003

Awards: \$24,000 in awards in cash and medals

Jury of Selection: Jason Chang, Gabriela Delloso, Robert Palevitz, Lucille Berril Paulson, Madeleine Segall-Marx, Nessa Grainger (Alternate)
(Continued on page 6)

Exhibitions and Competitions

Allied Artists of America (Continued from page 5.)

Juror of Awards: George Bolge, Director
Boca Raton Museum of Art

Eligibility: Open to all artists

Fees: Free to Members and Associate Members in good standing. Non-members \$35 (non-refundable)

Commission: 20%

Mail SASE: Rhoda Yanow, Corresponding Secretary
19 Springtown road
433 Flamingo Drive
White House Station, NJ 08889

E-mail: thomasvalenti@alliedartistsofamerica.org

Website: www.alliedartistsofamerica.org/

Prospectus: www.alliedartistsofamerica.org/prospectus.htm

Global, Lifestyles: Big Cities, Small Towns, Tiny Villages

Online

Deadline: September 13, 2010

Exhibit Date: September 29 - December 7, 2010

Sponsor: Still Point Gallery
193 Hillside Road
Brunswick, Maine 04011

Venue: Still Point Online Gallery

Awards: Artists of Distinction will be awarded "Gallery Artists" for 2011
(See: www.stillpointartgallery.com/index.php?action=galleryartists)

Juror: Christine Brooks Cote, Gallery Director - Still Point Art Gallery

Eligibility: Open to artists 18 years of age or older. Any medium except video and wearable art.

Fees: Non-refundable fee of \$25 for up to 3 images. Additional images may be submitted at \$5 each. Maximum 8 images at \$50.
Commission: 20% Must indicate pieces not for sale.

Mail: Still Point Gallery
193 Hillside Road
Brunswick, Maine 04011

E-mail: christine@stillpointartgallery.com

Phone: (207) 837-5760

Fax: (207) 725-4909

Website: www.stillpointartgallery.com

Prospectus/Entry Form:

www.stillpointartgallery.com/index.php?action=prospects

IAPS Seventeenth Juried Exhibition 2010 Web Show

Online

Entry Deadline: September 15, 2010

Exhibit Date: Begins early to mid-October

Sponsor: International Association of Pastel Societies

Venue: Internet

Awards: First Place, \$1,000 merchandise certificate from Jack Richeson & Co.; Second Place: \$500 merchandise certificate from Jack Richeson & Co.; Third, Fourth, Fifth Place and Honorable Mentions to be determined

Jurors of Selection:

Lorenzo Chavez, PSA
Margaret Evans, DA, ATC, PSA, PAC
Bill Hosner, PSA

Juror of Awards: Claudia Seymour, PSA

Eligibility: Original dry pastel only. Work must be original, completed in the last two years and not shown in any previous IAPS Exhibitions

Fees: \$25.00 for the first image and \$10.00 for each additional image. Up to 5 images may be submitted by an individual artist

Commission: 30%

(Continued next column.)

IAPS Seventeenth Juried Exhibition (Continued.)

Mail: Liz Haywood-Sullivan
IAPS Web Show Chair
P.O. Box 552
Marshfield Hills, MA 02051

E-mail: Show Chair liz@haywood-sullivan.com

Website: www.pastelinternational.com

Prospectus/Entry Form:

www.pastelinternational.com/COMPETITIONS/documents/webshow2010.pdf

New Directions '10

The Barrett Art Center's 26th Annual National Juried Contemporary Art Exhibition

Poughkeepsie, NY

Deadline: September 17, 2010

Exhibit Dates: October 23 - November 20, 2010
Reception: Saturday, October 23, 4:00 - 6:00 pm

Sponsor: Barrett Art Center

Venue: Barrett Art Center Galleries
Poughkeepsie, NY 12601

Awards: First, Second, Third - Cash Awards, Three Honorable Mentions, Exhibition Opportunities

Juror: Nat Trotman, Guggenheim Museum of Art

Eligibility: All artists, all media

Fees: \$30.00 for first four images, \$5.00 each for additional image

Commission: 50% non-BAC members / 40% BAC members

Mail SASE: Barrett Art Center
55 Noxon Street
Poughkeepsie, NY 12601

E-mail: Laurie Clark info@barrettartcenter.org

Phone: (845) 471-2550

Website: www.barrettartcenter.org

Prospectus:

www.barrettartcenter.org/pdfs/NEW DIRECTIONS 10 Prospectus webfinal.pdf

¡SIN! National Juried Exhibition

Miami, FL

Deadline: October 01, 2010

Exhibit Date: November 30th – January 24th 2011

Reception: November 30th 7-10pm (Dates subject to change)

Sponsor: The Bakehouse Art Complex

Venue: Bakehouse Art Complex
561 NW 32nd Street
Miami, FL, 33127, Wynwood, Florida, 33127

Theme: ¡SIN! is a national juried exhibition of original work inspired by a traditional concept of human transgressions. Lust, envy, gluttony, sloth, greed, wrath and pride have had an enormous impact on the moral compass of the modern world. With many different interpretations and understandings, each individual sin has been explored and exposed numerous times.

¡SIN! will be on view during the world renowned art fair Art Basel Miami 2010. In its 2,600 square foot gallery, the artists, chosen by a reputable panel of curators, will display their works that are directly related to one of the deadly sins. Each of the seven sins is explored, from their origins and nature, their opposing virtue, and their corresponding punishment through a variety of media and styles from across the country.

Applicants will present their work to a highly distinguished panel of jurors consisting of Museum and respected Art Professionals from Miami. Each juror has chosen a specific sin, which they will individually curate.

Jury: Greed: Silvia Karman Cubiñá
Executive Director/Chief Curator, Bass Museum of Art
Lust: Brian Dursum, Executive Director & Curator, Lowe Art Museum
Envy: Jeremy Chestler, Executive Director, Art Center / South Florida
Gluttony: Bonnie Clearwater, Exec. Director/Chief Curator, Museum of Contemporary Art, North Miami

(Continued on page 7.)

Exhibitions and Competitions

¡SIN! National Juried Exhibition (Continued from page 6.)

Sloth: TBA
Wrath: Carol Damian, Professor & Director/Chief Curator,
Frost Art Museum
Pride: Cathy Leff, Director, The Wolfsonian

Eligibility: All media welcome

Fees: \$45.00 Applicants may apply for up to 5 different sins corresponding with 5 images. Payment must be by check and submitted with application

Commission: 30% All work must be for sale

Mail: The Bakehouse Art Complex
ATTN: Lauren Wagner
561 NW 32nd Street
Miami, FL, 33127

E-mail: info@bacfl.org

Phone: (305) 576-2828

Website: www.bacfl.org

Prospectus: www.bacfl.org/uploads/call%20to%20artists.pdf

The Artist's Magazine - Over 60 Art Competition

Publication

Entry Deadline: October 1, 2010

Exhibit Date: March 2011

Sponsor: F+W Media, Inc.

Venue: The Artist's Magazine and online

Awards: \$1000 in prizes - 10 Winners - \$100 Each

Winners will be published in the March 2011 issue of The Artist's Magazine and on the website. All winners will receive a certificate suitable for framing.

Judging: Entries will be prejudged and award winners will be chosen by the magazine staff. All properly prepared entries will be viewed and judged.

Eligibility: Artist's birth date must be on or before June 1, 1950.

The contest is open to all artists working in all traditional art media (No digital art or photography).

Fees: \$15 per slide or image

Mail: ATTN: Competitions Dept.
The Artist's Magazine Over 60 Competition
4700 East Galbraith Road
Cincinnati, OH 45236

E-mail: art-competition@fwmedia.com

Website: www.artistsnetwork.com/artistsmagazine/

Prospectus: www.artistsnetwork.com/over60

Download printable entry form:

www.artistsnetwork.com/upload/images/competitions/The%20Artist%20Magazine%20Over%2060%20Competition.pdf

Online Application:

https://competitions.fwmedia.com/dynamiccompetition2010over60competition/entry_form

Artisphere

Greenville, SC

Entry Deadline: October 21, 2010

Exhibit Date: May 13-15, 2011

Venue: Historic West-End Downtown Greenville, SC

Awards: \$10,000 in prize money for Best in Show, 2nd Place, 3rd Place, and merit awards

Jurors: Karen Green, Katie Lee, Todd McDonald, Danielle Miller-Gilliam

Eligibility: Each artist applicant must complete an application with only one artist per entry unless entering as a team in collaboration. Artists may apply in more than one category, but a separate application must be completed for each category. Artists can apply online through Zapplication or with a Paper Application.

Fees: \$30 jury fee or \$50 paper application fee; \$250 exhibitor fee for accepted artists

Mail: Artisphere
16 Augusta Street
Greenville, SC, 29601

(Continued next column.)

Artisphere (Continued)

Telephone: (864) 271-9355

E-mail: Liz Rundorf Smith liz@greenvillearts.com

Website: www.artisphere.us

Prospectus: www.artisphere.us/html/pdf/2721%2010JMG%20ArtistApp.pdf

The 10th Annual

Art Inter/National Exhibition... here and abroad

Pittsburgh, PA

Entry Deadline: November 1, 2010

Exhibit Date: January 4-29, 2011

Sponsor: Box Heart Gallery

Venue: Box Heart Gallery

Awards: One artist will receive the Best of Show Award. This artist is awarded Box Heart "Artist of the Year" and receives their own solo exhibition

Jurors: Nicole Capozzi and Joshua Hogan

Eligibility: Art Inter/National is a celebration of artistic expression from all over the world. It's an exhibition that displays how the space one occupies both influences and guides the creative process. Box Heart encourages diversity in the media used to create the work, in the artists and his/her interpretation of Art Inter/National. There are no limits or boundaries, no categories or types. Box Heart is looking for expressions in art that are not only cultivated, but also created because of each artist's place on this earth.

Fees: No Entry Fee

Commission: 40%

Mail: Box Heart Gallery
4523 Liberty Avenue
Pittsburgh, PA 15224

Telephone: (412) 687-8858

Fax: (412) 687-6338

E-mail: Nicole Capozzi boxheartexpress@earthlink.net

Website: www.boxart.org

Prospectus: www.boxheart.org/nn/exhib.html

1st International Donkey Art Prize

Modern and Contemporary Art Competition

Milan-London-New York-Tokyo

Deadline: December 15, 2010

Exhibit Dates: February-May 2011

Sponsor: Blindonkey Cultural Association

Venue: Bakehouse Art Complex
561 NW 32nd Street

Miami, FL, 33127, Wynwood, Florida, 33127

Awards: •15000 in cash prizes divided equally among three categories: Painting, •5000, Digital art, •5000, Photography, •5000 Winner of each category will receive free accommodations in a four star hotel in Milan, Italy, for the awarding ceremony and exposition.

Jurors: Moratti Andrea, Pimazzoni Andrea, Delaini Cesare, Fiorese Mauro, Antolini Davide, Cossu Antonio, Berlanda Orietta, Tombola Carlo, Balestrini Massimo, Bovo Elisabetta, Anna Tedesco

Eligibility: Open to all artists

Fees: •30

Commission: 30%

Mail: Blindonkey Cultural Association
c.f. 03921350231

Porta Nuova st. 127, 37122 Verona, Italy

E-mail: info@donkeyartprize.com

Website: www.donkeyartprize.com

Prospectus: www.donkeyartprize.com

Workshops/Classes

APS Sponsored Workshops:

Youth Building, WNC Agriculture Center, Fletcher, NC

Workshops are open to the public only if space is still available after APS members sign up.

Ann Templeton - Three Day Workshop

“Abstracting the Landscape in Pastels”

Sponsored in conjunction with 2010 APS 2nd National Juried Exhibition.

October 15 - 17, 2010 9:00 am - 4:00 pm.

Demos and lectures in the morning. Students will paint in the afternoon. Two general critiques, as well as daily critiques.

Hands-on learning, with plenty of time for suggestions.

Fee: APS Members \$350, Non-members: \$375 (If unable to attend all 3 days, a participant may choose the option of paying \$125 per day. Non-members must add a one time \$25 membership fee.)

Workshop limited to 18 students. Hold your place with a deposit of \$125, balance due September 15, 2010.

Learn more about Ann Templeton at www.anntempleton.com

Additional Information and Entry Form:

www.appalachian-pastel-society.org/AnnTempletonWorkshop2010_2.pdf

For advance registration: Make check payable to Appalachian Pastel Society, and mail to:

Karen Chambers
116 Sams Branch Road
Candler, NC 28715

Phone: (828) 665-8538

E-mail: karenpaints@hotmail.com

Margaret Dyer - Three Day Workshop

“The Figure in Pastels”

August 28–31, 2010 9:00 am - 4:00 pm.

Greenville, NY

Students are taught a traditional pastel painting technique, working with live models. Drawing, composition, anatomy, proportion, value, color and pastel application will be explored. Emphasis will be on developing form using light and shadow. For those wanting to speed up and become less tight in their work, this is an excellent class to take. Students do not need prior pastel experience. Some drawing would be helpful, but not imperative.

Sponsor: Hudson River Valley Art Workshops

Email: Kim LaPolla info@artworkshops.com Subject: workshop

Phone: (518) 966-5219

Web site: www.artworkshops.com

Susan Sarback - Five Day Workshop

“Light & Color Landscape”

September 27–October 1, 2010 9:00 am - 4:00 pm.

Cary, NC

This workshop combines the Color Intensive and Landscape workshop working both in the studio and outdoors. Depending on weather, there will be both still life and landscape painting. A slide presentation and demonstration are included.

Sponsor: Cary Art League

Email: Jean Scholz art.jean@gmail.com Subject: workshop

Phone: (919) 303-7887

Web site: www.lightandcolor.com

Coleen Howe Workshops

4 Day Workshop September 20–23, 2010, 9:00 am - 5:00 pm.

3 Day Workshop September 25–27, 2010, 9:00 am - 5:00 pm.

Essex, CT

Popular plein air workshop pastel instructor, **Colleen K. Howe** (www.colleenhowe.com) has taught students across the United States and abroad. An award winning painter in national competitions including a Silver Award at IAPS, she is a signature member of the Pastel Society of America and American Women Artists. Articles about her work have appeared in *The Pastel Journal*, *The Artist's Magazine*, *American Artist* and *Southwest Art*. She has participated in several invitational events with the Plein Air Painters of Northern Utah and Rocky Mountain Plein Air Painters. Howe trained in pastel painting with Sally Strand, Doug Dawson and Michael Workman. She studied painting at Brigham Young University and the University of Utah. Her work is represented in many galleries throughout Utah and Wyoming.

Sponsor: Connecticut Pastel Society

Fee: 4 Day Workshop CPS Members \$425 Non-Members \$450

3 Day Workshop CPS Members \$325 Non-Members \$350

More Information/Application:

www.appalachian-pastel-society.org/ColleenHoweWorkshops_2010.pdf

Email: Karen Bahrenburg karenbahrenburg@yahoo.com

Phone: (845) 452-4883

Web site: www.ctpastelsociety.com

“Create Your Best”

with Suzanne Karnatz, PSA.

Two day workshop: October 1 & 2, 2010 10 am - 4 pm

Day one: Using your own sketches or photos, Master Pastellist, Suzanne Karnatz, will guide you to see, identify design, composition, etc. to help you create your best. Day two: You will have the option to re-create a semi-abstract piece from your first day's painting. Lecture, demo, and individual and group critiques both days.

Levels: Beginner-intermediate, intermediate, and advanced.

Place: SVFAL Studio, 999 Old US 70 W., Black Mountain, NC.

Cost: \$200.

Susi Karnatz, PSA, is known nationally and internationally as Master Pastellist. Her work is exhibited widely in N.Y., the Midwest, France, and locally. She loves to teach and bring out the best of a student.

To Register: send full registration fee, or \$50 deposit, to Stan Skeen, 350 Bee Tree Rd. Swannanoa, NC 28778.

Supply List: Pastels (soft and hard, not oil pastel) Paper: sanded paper (Wallis, Art Spectrum, Ampersand). Turpentine, alcohol, or mineral Spirits. Flat brush. Sketch pad for thumbnail sketch.

For More Information contact call Suzi Karnatz at (828) 884-5555, or Denise Geiger at 828-669-5947 (e-mail: geigerjd@charter.net)

SVFAL Live Model Open Studio

Swannanoa Valley Fine Art League Studio, Mondays, 1:00-4:00pm. One model, one pose, and short breaks every 20 minutes. Figure drawing sessions, Mon. & Fri. 10:00am-1:00pm. Multiple poses.

Contact: Tel 225-9524, E-mail francesgreenberg@netscape.net

APS Meeting Minutes

Appalachian Pastel Society Board Meeting Minutes July 10, 2010

Members present: Bev Kies, Susan Sinyai, Marian Sinks, Karen Wylie, Nancy Clausen, and Gail Wheeler.

Bev opened the short meeting with a report of the incoming APS Officer nominees and Committee volunteers for September 2010-2011.

Officer Nominees:

President (None)

Vice President: Annette Winters

Treasurer: Susan Sinyai

Secretary: Marian Sinks

Committee Volunteers:

Membership: Kay Gordon

Program and Mini-Workshops: Gail Wheeler

Publicity: Carol Morrow

Annual Juried Exhibition: (None)

Non-juried Shows: Karen Chambers and Nancy Clausen

Paint-outs locations: Susan Voorhees

Nominations: Leigh Condie

Library: Mary Robinson/Fran Greenberg assisting

APS Newsletter/Website: Ed Hunting/ Meredith Adler assisting

Hospitality/Meetings: Coleen Meecham, with Marnie Michaels and Sheryl Daniels

Nancy Clausen, as Nominating chairman, has successfully filled an amazing number of these positions. (AND orchestrated the moving of her family home in Raleigh to our beautiful mountains!)

Treasurer's Report: \$5,913.73

Discussion - October Ann Templeton National Show/ Workshop: Karen W. and Nancy C.

\$500 juror's fee

\$500 to \$700 estimated cost of travel, food etc.

\$1000 Best-in-Show Award

\$500-\$1000 other cash awards

\$700 Catalog printing (500 copies) *could be cut back to a listing of artists and entries on one front & back sheet, if necessary due to money issues.

\$400 Pastel Journal advertising

\$200 reception costs

These expenses total about \$4,000.00

Show will be held at the Gallery of the Arts Council of Haywood County, Oct 20 to Nov 13, with the Reception Oct. 22.

Nancy reported that Ann Templeton agreed to change the 5-Day workshop to a 3-Day workshop and will now include oil and watercolor artists as well as pastel.

The workshop will be Fri. 15, Sat. 16 and Sun. 17. Total 3-day workshop will cost \$350, or for those unable to attend the full workshop, a participant may choose the option of \$125 per day. Full payment for the workshop is due Sept. 29. Artists using oils will be required to use odorless Turpenoid Blue label.

Next board meeting will be Tuesday, August 10 at Ryan's Steak House at 5:00 pm.

Respectfully submitted,
Marian Sinks

Appalachian Pastel Society Board Meeting Minutes August 10, 2010

Members present: Bev Kies, Kay Gordon, Susan Sinyai, Marian Sinks, Karen Wylie, Nancy Clausen, Karen Chambers, Pam Potter, Carol Morrow, Mary Robinson with Ed Hunting.

Nominations: Bev opened the meeting with an announcement of the complete slate of candidates for the 2010-2011 officers. The slate will be voted on by the general membership at the September 11 meeting.

Officers:

President: Kay Gordon

Vice President: Annette Winters

Treasurer: Susan Sinyai

Secretary: Marian Sinks

Committee Volunteers:

Membership: Kay Gordon

Program and Mini-Workshops: Gail Wheeler

Publicity: Carol Morrow

Annual Juried Exhibition: Kate Thayer and Karen Wylie

Non-juried Shows: Karen Chambers and Nancy Clausen

Paint-outs locations: Susan Voorhees

Nominations: Leigh Condie

Library: Mary Robinson/Fran Greenberg assisting

APS Newsletter/Website: Ed Hunting/ Meredith Adler assisting

Hospitality/Meetings: Coleen Meecham, with Marnie Michaels and Sheryl Daniels

Treasurer's Report: \$6,208.00

Discussion: October National Show and the Ann Templeton Workshop:

Entries Received: 26 entries as of August 10, 2010

- 12 non-members; and
- 14 APS members.

Economy Measures: After considering the status of the APS budget, several suggestions for reducing costs were made:

- Changes to the format of the catalog
- Members will provide the refreshments for the Aug. 22 reception

Information to Members: Karen Chambers, and Nancy Clausen will send members a list of information about the Show. We need more volunteers to help with take-in at Haywood Gallery 86 in Waynesville.

Dates: The National Show runs October 20 through November 13. The Opening Reception at the Gallery will be Friday, Oct. 22 from 6:00-9:00 pm.

Ann Templeton Workshop: Nancy Clausen reported:

- **Dates.** The workshop will be held Oct. 15, 16, and 17.
- **Vacancies.** There's still room for more workshop participants.
- **Cost:** 3 days total cost: \$350 or, if unable to attend all 3 days, a participant may choose the option of paying \$125 per day.

Waynesville Art Walk: The town of Waynesville will host an Art Walk Friday, November 5 and the APS will hold a Reception in the Haywood Gallery 86, 6:00-9:00 pm.

Next General Meeting: The next APS general meeting will be Sat., Sept. 11 at Black Mountain Center for the Arts, from 10:00 am to noon.

Paul deMarras will give a presentation on the value of a limited palette. He will have many of his regular pastels for sale.

Next Board Meeting: Tuesday, September 7, 5:00 pm at Ryan's Steak House.

Respectfully submitted,
Marian Sinks

Appalachian Pastel Society Membership Application

Name _____

Address _____

City _____ State _____ Zip _____

Telephone _____ AltTelephone _____

Email _____ Website _____

Renewing member _____ New Member _____

Artist ____ Art Supporter ____

Committee Interests:

Exhibitions ____ Programs ____ Hospitality ____
Telephone ____

Newsletter ____ Membership ____ Clerical ____
Workshops ____ Other _____

Awards/Experience/Comments/(or, what are your expectations from APS):

Please include a check made payable to "APS" in the amount of \$25 for membership for one year.
APS membership year starts September 1st.

Send to: Kay Gordon
APS Membership Chair
2016 Upper Paw Paw Road
Marshall, NC 28753

More information: www.appalachian-pastel-society.org
Or contact Kay at: kgordon@main.nc.us
828.649.3363 or 828.206.0240