



Letter from the President

Suzanne "Sparky" Nelson

Greetings! We all know what it takes to ensure a good painting – a strong, well developed composition, a range of values, harmonious use of color, good edges – both lost and well-defined, and a clear and interesting focal point. There is also the consideration of an underpainting – it can be critical to the desired result.



I'd like to suggest that a strong, vibrant Pastel Society needs many of the same things. Huh? you ask. Well, if you are accustomed to coming and enjoying APS meetings, you may not have thought about what goes into running the society. What you see is merely the finished painting! Hopefully, the focal point – the day's program – captures your interest and leaves you wanting more. But I want you to also appreciate the underpainting and the composition and the work that supports what you enjoy.

A small group of volunteers (in truth, too small a group) are the artists who create the APS "painting." They comprise the Board and committees of the APS. They sketch out the composition – the schedules of exhibitions, programs and workshops and paint outs. They create the underpainting of meetings by schlepping the books and DVDs, hauling in the coffee pot and refreshment supplies, the projector and computer equipment. They show up early to help set up the room, and they bring wine and food to receptions.

Some volunteer to frame this work with several member benefits: this great newsletter, a frequently updated and informative website, and communications regarding events and opportunities of interest.

Like any good artist, those who create this APS "painting" need fresh ideas, need to experiment with new techniques and add some new colors to the palette from time to time. What I am suggesting is that we need You, your ideas and your skills to keep our APS "painting" vibrant and interesting. We will be recruiting volunteers at our Annual Meeting on Saturday, September 12th. Please be ready to lend your time and talents to the effort. Thank you!

Sparky

In this Issue

Letter from the President..... 1

APS Program/Workshop..... 2-4

Directions to Meeting..... 4

Save the Dates..... 4

Artist of the Month..... 5-6

News of Our Members..... 7

Juried Member Show..... 8

Your Own Webpage..... 8

Opportunities..... 9

Library..... 10

Thanks..... 10

Board Members..... 11

Membership Application..... 12

The APS general meeting is scheduled every second Saturday of the month i.e. Jan, Mar, May, July, Sep, Nov, from 10 am - 12 pm and those interested in pastel are welcome.

**Abstract Painting-What Is It All About??
Pastel Presentation... Fleta Monaghan, BFA, MaED**

**Appalachian Pastel Society Meeting
September 12, 2015 10 am - Noon**

The public and all artists are invited. There is no fee to attend the morning meeting.

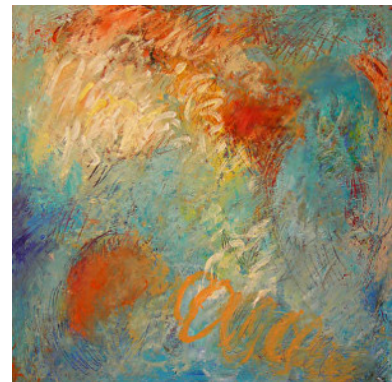
**"Breathing Life Into a Flower Portrait"
Susan Sinyai, BFA, APS-Participating Member presents
The Afternoon Workshop from 1-4pm**

Requires Registration

**Grace Community Church
495 Cardinal Rd.
Mills River, NC 28759**

Often we hear comments such as, "My kid could paint that!" when those unfamiliar with abstract art see work in museums or galleries. So, what is it all about? This discussion will touch on the development of the abstract genre since the 19th century and what is happening today. Why is All art abstract, and what does abstraction have in common with more understood subjects such as landscapes and portraiture. How can realist artist benefit from understanding the foundations of abstractions. This talk will include a slide presentation and question and answer time.

Fleta is Founder and Director of River's Edge Studio and 310 Art Gallery. This venue was founded in 2006, and is the oldest in the River Art District. She has exhibited extensively and her art work is in collections worldwide. She grew up on the west coast of Florida, on the beautiful Gulf of Mexico. After traveling around the United States and living in San Francisco, Oregon and Virginia, she settled in Asheville, North Carolina in 1981. "I have always been attracted to beautiful and historic places populated with interesting and artistically inclined people. After visiting Asheville briefly, I decided this was a perfect place to live and work. I love the thriving arts community, and enjoy working and teaching in a poetically timeworn 100 year old warehouse in the River Arts District of Asheville. The oldest of seven children, she began painting in oils and pastels at an early age. Her earliest works still in existence are pastel copies of Botticelli paintings, executed at age twelve.



Light Caress



No Place to Hide

(Continued on P. 3)

(Program - continued from Page 2)

"I have heard it said that an artist only has to look at the art work they created as a child to see the directions and themes that will resonate in their adult work. That is certainly true with me. I experimented with all kinds of materials as a kid - marbling paper with oil paint, making paper, drawing and painting and creating costumes. I would read about some new technique or see some interesting art, and the next thing you knew I was trying it out. Naturally, most of my experimentation took place outside! In recent years I have been experimenting with oil and wax, oil pastels and painting with heated beeswax. These traditional materials involving beeswax are very old, and reinventing new ways to use materials has always been interesting to me. I am always seeking an essence of thought and feeling when I combine imagery with materials. There is an unbroken thread that weaves through all my work, no matter what materials I use or which techniques I employ. The Gulf of Mexico strongly influenced my visual, spiritual and philosophical senses as have the Mountains here in North Carolina.

"Breathing Life Into a Flower Portrait"
Susan Sinyai, BFA, APS-Participating Member presents
The Afternoon Workshop from 1-4pm
Requires Registration: <http://www.appalachianpastelsociety.org>
or contact Kitty Williams at 423.764.2911 or bk@btes.tv
Cost: \$45 for Member and \$55 for Non-Members

I am enchanted and always fascinated by the essence of light, captivated by the manner in which it plays with color, manipulates form, creates mood, and drama. This is what draws me to a particular landscape, scene, or what I try to create in a still life. This observation experience is only the starting point for my inspiration. Faithful representation is but part of the equation, as my imagination, mood and memories inevitably play a role in the creation of a painting. It is indeed a painting of a teapot, a pear, a flower, field, or path, but it's also



Resplendent



so much more. To quote Annie Bevan - *Art is our memory of love. The most an artist can do through their work is say, let me show you what I have seen, what I have loved, and perhaps you will see it and love it too.*

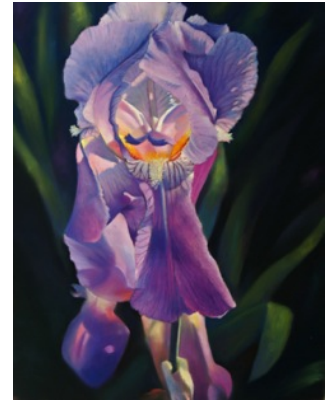
Susan has won many awards and exhibited widely throughout the region and nationally.

Luminous

(Workshop continued on P. 4)

Continued from P. 3 - Afternoon Workshop by Susan Sinyai

In this workshop I will explore ways to help your flower portrait perk up, come to life, and be successful from the ground up. This will include the essential element of a strong, well thought-out composition. I will also talk about the importance of a good photograph, if that is the resource from which the painting evolves. Techniques and materials used in creating the important underpainting will be discussed and illustrated, and then the journey towards creating a sense of luminosity. The purpose of the workshop is not so much to complete a beautiful painting, but more about planning and beginning, so as to avoid problems later in the painting process. There will be a demonstration, and then we will begin painting, with options to work from life or from a photograph. Participants may bring their own photographs or flowers if they wish, but photographs will also be provided. I will be focusing on close-up and personal views of the flower, rather than the flower in a still life composition.



Unfurled 1

DIRECTIONS TO APS MEETINGS AT GRACE COMMUNITY CHURCH

495 Cardinal Road, Mills River, NC 28759

From I-26, take Exit 40 for the Asheville Airport. Drive 3.3 miles on NC-280W/Airport Rd. passing the Asheville Airport. Turn right on Cardinal Drive, between the Land Rover dealer and Grace Church (up on the hill). Turn left at the top of the drive into the church parking lot.

Go to the left side of the building to the green awning entrance.

Refreshments will be served. Bring a friend!

SAVE THE DATE FOR FUTURE APS MEETING

Saturday, November 14, 2015, 10 am to 12 noon for the Appalachian Pastel Society Meeting.

Suzy Hart presents: "Portrait Demonstration with a Life Model"

Morning demonstrations are free and open to the public.

The afternoon workshop from 1 to 4 pm by Suzy Hart:

Skills Building: Building a strong underpainting, measuring/checking proportions, mixing flesh colors, values and the anatomy of features.

Watch for registration for this workshop.

Artist of the Month - Pamela Winkler



Churning

After retiring from a career as an architect in 2008, I decided to take two years exploring various art forms and media in hope of finding a new passion. I explored ceramics, stone carving and drawing before falling for pastel painting. I have been working in pastels since 2010 and currently paint in my studio at Northlight Studios, 357 Depot Street in the River Arts District, Asheville, NC.

I am drawn to the history of aging cars, doors, trains, signs, bottles and many other items. Like a pair of old hands, as these items age and wear they become more interesting with increased textures and colors, while still revealing something of their past. These old everyday functional objects often reveal the dedication to craft and beauty of their makers not often seen in today's mass production. My work starts with a photograph. I always have a camera on hand to capture unexpected objects and compositions. I crop the image on the computer to discover the most interesting and dramatic arrangement and look for sculptural

forms to highlight. I exaggerate the lighting and contrast to bring depth to the objects and a theatrical sense often at odds with their common nature.

I use a variety of sanded papers depending on whether I am painting something rusting or peeling, or a shiny reflection in chrome. I work with both additive and subtractive processes, putting down multiple layers of colors, and then using a paper towel or stiff brush to remove some of the layers. I am always trying new ways to express various textures. I like to blend several layers of colors when painting chrome, or lay down rough unblended strokes when portraying rust. I love to search for new subjects and textures to challenge myself and continue growing in my art.

(Continued on P. 6)



Dodge



Coal Train

(Continued from P. 5)

Pamela Winkler teaches private and semi-private classes in her light filled studio. Please contact her at 828-545-9025 for more information. Pamela Winkler www.pamelawinkler.com



Graffiti



Musing on Mondrian

AWARDS and PUBLICATIONS for PAM WINKLER

2015

Asheville Gallery of Art - January 2015 - group show
Carolina's Got Art, Charlotte, NC – accepted entry June Salon

2014

Piedmont Pastel Society 2014 Statewide Juried Exhibition, Charlotte, NC - accepted entries
Flow Gallery, Marshall, NC - Solo Show
The Laurel of Asheville - November 2014 - cover artist and feature article

2013

Carolina's Got Art, Charlotte, NC – accepted entry June Salon
Appalachian Pastel Society Statewide Juried Exhibition, Hickory, NC – accepted entry
Carolina Home + Garden - Fall 2013

2012

Pastel Society of North Carolina 2012 Statewide Juried Exhibit, Raleigh, NC - Award
APS National Juried Exhibition, Asheville, NC - accepted entry
International Association of Pastel Societies 21st Juried Exhibition, Web Show - accepted entry

2011

“The American Still Life” exhibit at The Bascom, Highlands, NC - 2nd Place Award
Appalachian Pastel Society Juried Exhibition, Black Mountain, NC - 2nd Place Award
Cincinnati Art Club ViewPoint 2011, Cincinnati, OH - People's Choice Award
International Association of Pastel Societies 19th Juried Exhibition, Web Show - accepted entry

Quote of the Day

Composition is the wholeness, the thing that coordinates color, form, value, everything. That's the vision, the big idea. Everything plays to it. As Paul Valery, the French poet said, "To see is to forget the name of the thing one sees."

Ian Roberts, painter, from *Creative Authenticity, 16 Principles to Clarify and Deepen Your Artistic Vision*

News of Our Members



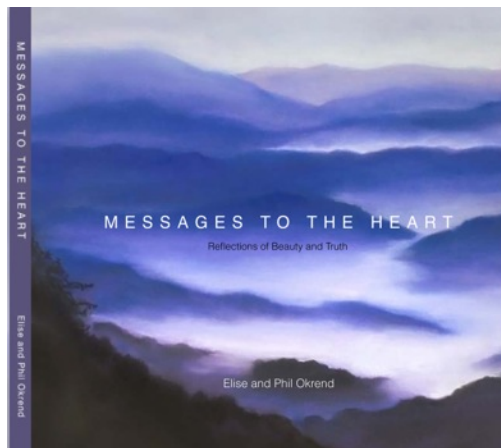
Congratulations to Suzy Hart
who had a painting accepted into the
43rd Pastel Society of America Exhibition,
September 8 through 26, 2015
at the National Art Club in New York City.

Lilies Afloat

Messages to the Heart, Reflections of Beauty and Truth by Elise and Phil Okrend

Messages to the Heart, is a gorgeous inspirational coffee table book, born from an organic pairing of my husband, Phil's and my passion. It combines my serene, healing pastel paintings paired with Phil's mindful philosophy derived from years of coaching clients to success. Together, they bring a visceral expression of everyday inspiration brought together through art and words. Readers will feel touched, inspired and reminded of their "ah-ha" moments of truth and beauty in their own lives. The book captures the spirit of Asheville and its surrounding natural beauty with paintings of light, clouds, mountains and lakes of areas such as the Blue Ridge Mountains, Lake Fontana and the Great Smokies. Not just a beautiful art book, Messages to the Heart is also a tool that readers can use again and again to pull themselves through life's challenges. The book is 82 pages with 37 reproductions of my original paintings.

Messages to the Heart and my artwork is available at The Kress Emporium and The Asheville Gallery of Art, in downtown Asheville. The book is also available at Malaprops, Mountain Made and Chifferobe, in Black Mountain. Online at, www.messagestotheheart.com and www.eliseokrend.com/messagestotheheart. I invite you to check it out! Elise Okrend



**The Appalachian Pastel Society Juried Exhibition
at the Black Mountain Center for the Arts**

2015 APS Juried Member Exhibition

Black Mountain Center for the Arts
225 West State Street
Black Mountain, North Carolina

October 16 – November 30, 2015

Join us for the Opening on Friday, October 16, 2015, 6-8 pm

The reception will be catered by Fresh Fire Baked Pizza
& Pasta of Black Mountain & the River Arts District

Your Own Webpage for only \$30!

Did you know that as an APS member, you can have your own webpage on the APS Website?

For only \$30 (one-time charge...no yearly fee), you can have a page that will link from your name in the Membership List. If you already have your own website, we can put a link on this page that will direct people to your website.

Updates to this page can be made for \$15...but otherwise there is no additional charge.

For details...and to see pages already in place, go to the APS website (www.appalachianpastelsociety.org), and click on the "Member Directory and Gallery" tab at the top of any page.

Information about how to have your own page is above the membership list.

If you have questions, contact the APS Webmaster...

Kay Gordon

APS Webmaster

kgordon@main.nc.us

828.206.0240

Opportunities

Arts Depot to Host Women Painters of the Southeast 5th Annual exhibit in 2016:

The Arts Depot in Abingdon is pleased and excited to host the 5th annual Women Painters of the Southeast Exhibit in April, 2016. **More than \$13,000 in cash and in-kind awards have been secured so far, including: \$5,000 best in show! Jurying will be done in November 2015 so now is the time** to explore this opportunity.

About WPSE:

Women Painters of the Southeast (WPSE) www.womenpaintersse.blogspot.com is dedicated to promoting women painters whose works are representational and who live in the southeast United States (Alabama, Arkansas, Florida, Georgia, Louisiana, Mississippi, North Carolina, South Carolina, Tennessee, Kentucky, Virginia and West Virginia). We encourage members to participate in (WPSE) events, such as juried exhibitions, featured artists, and on-line exhibitions. Women artists are growing in number. We dedicate our efforts to bringing women artists to the forefront. This organization is juried. Any woman painter whose works are representational and lives in the southeast United States is able to apply.

Representational paintings of original design and concept only.

Accepted mediums are: oil paint, watercolor paint, pastels, acrylic paint, gouache and egg tempera only.

Feel free to contact me for any reason but registration and jurying must be done on the WPSE website.

www.womenpaintersse.blogspot.com

Susan Yates, Arts Administrator

Arts Depot- Abingdon, VA

276-628-9091 abingdonartsdepot@eva.org www.abingdonartsdepot.org

The Geezer Gallery

The Council on Aging of Buncombe County is excited to announce a new program! The Geezer Gallery, which was originally established in Portland, Oregon, is currently in the first phase of replication. Our replication includes the two major components of The Geezer Gallery including a creative arts program and providing opportunities for older master level artists to exhibit and sell their art.

Our first exhibit is at the Arrowhead Gallery in Old Fort that will run September 24-October 22. We are currently offering the 10-week creative arts program to the residents of Battery Park and Vanderbilt apartment buildings in downtown Asheville.

The mission of The Geezer Gallery is to serve as a social change agent with respect to our perceptions of aging. The name of The Geezer Gallery is intended to be provocative as we want to provoke conversation and new ways of thinking about what it means to be an aging or "older" person in today's world.

[For more information, contact Turner Goins](#), Program Director for [the Geezer Gallery](#).

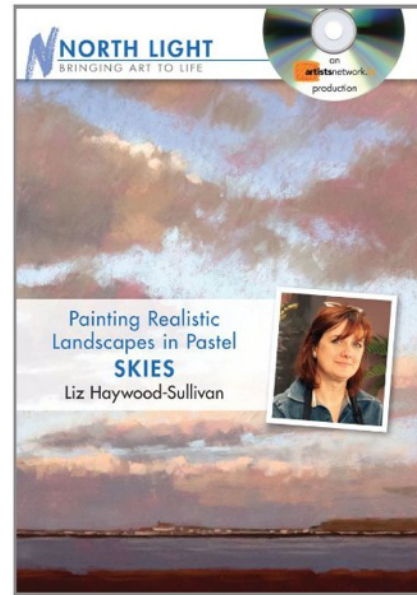
From the Library

Painting Skies that Sing

Respected pastel artist and teacher **Liz Haywood-Sullivan** brings artists a 94-minute widescreen DVD, ***Painting Realistic Landscapes in Pastel: Skies***. In this workshop, Liz starts out with an aerial perspective, value and color to introduce the elements needed to paint a believable sky. She then uses pastel to paint a colorful cloud-filled sky from start to finish. This popular art workshop is now available in the APS lending library which is displayed at each membership meeting. For more information or to reserve a DVD or book in advance, contact

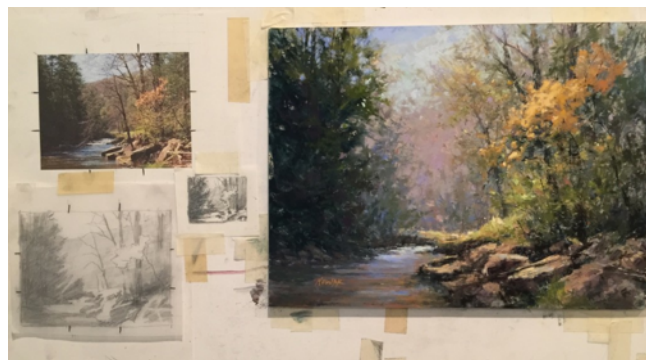
annekallen@gmail.com.

Anne Allen, Librarian



Our Thanks go to Nancy Nowak for her demonstration and workshop at our APS meeting on July 11 , 2015.

“My main focus for the demo was Painting Preparation. Just as the building of a structurally sound house needs a blueprint, an organized layout and a strong foundation, so does a painting. I find taking particular time to study your painting reference, having an intention of what kind of visual story you want to tell, working out a composition, simplifying the scene down to various and interesting abstract shapes through a value study is imperative to creating a better painting.” Nancy Nowak



Board Members

Officers



President:
Sparky Nelson
sparkynelsonpaints@gmail.com



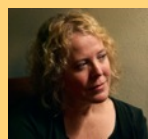
Vice President:
Gary Rupp
glrupp11@yahoo.com



Secretary:
Karen Chambers
karenpaints@hotmail.com



Treasurer:
Maggie Whitney
maggi whitney10@yahoo.com



Immediate Past President:
Suzy Hart
suzyhartfineart@yahoo.com

Board of Directors

NC Statewide Show:

Karen Chambers, karenpaints@hotmail.com



2014 APS National Show:

Jim Smythe, jamesesmythe@gmail.com

Carol Rollick, cbrollick@gmail.com

Membership/Communications:

Suzy Hart, appalachianpastelsociety@gmail.com



Public Relations:

Jim Hefley, jhefley@charter.net

Programs:
Kitty Williams, bk@btes.tv



Non-juried Shows (co-chairs):

Nancy Clausen, nancy@clauseninstrument.com

Deborah Squier, squierd@bellsouth.net

Elise Okrend, elise@eliseokrend.com



Hospitality:

Sheryl Daniels, stdaniels@embarqmail.com

Paint Outs:

Gary Rupp, glrupp11@yahoo.com

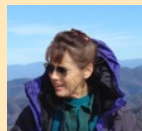
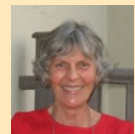


Library:

Anne Allen, annekallen@gmail.com

Newsletter:

Sydney Wilson, wilstu@charter.net



Website:

Kay Gordon, kgordon@main.nc.us

Juried Exhibitions:

Appalachian Pastel Society Membership Application

Name _____

Address _____

City _____ State _____ Zip _____

Telephone _____ Alt Telephone _____

E-mail _____ Website _____

Renewing member _____ New Member _____

Artist ___ Art Supporter ___

Committee Interests:

Exhibitions ___ Programs ___ Hospitality ___ Telephone ___

Newsletter ___ Membership ___ Clerical ___ Workshops ___

Other _____

Awards/Experience/Comments/(or, what are your expectations from APS):

Our new membership year is September 1st, 2014 to August 31, 2015. If you have not renewed yet, please print out the form below and send it in as soon as possible. This helps us keep our records current, keeps you in the loop for announcements about our awesome programs, shows, exhibitions and member news.

The new membership year promises to be an exciting one, with plein air events, great demonstrations and workshops, and the wonderful company and support from your fellow artists.

Stay in the loop, stay involved, and renew now! Please call me or email me if you aren't sure of your current status.

Send your \$25 dollar check and the Membership Application to:

Suzy Hart
122 Broome Lane
Easley, SC 29640

More information: www.appalachianpastelsociety.org
Or contact Suzy at: appalachianpastelsociety@gmail.com
845.986.3653