

# appalachian

■ ■ ■ pastel society

2017 APS NATIONAL EXHIBITION

---

OCTOBER 19TH - NOVEMBER 17TH

Juror of Entries and Judge of Awards, Dawn Emerson



HOSTED BY THE BURKE ARTS COUNCIL

IN THE JAILHOUSE GALLERY

115 E. MEETING STREET, MORGANTON, NC 28655

# Welcome!

---

## THE APPALACHIAN PASTEL SOCIETY'S 2017 NATIONAL EXHIBITION

The Appalachian Pastel Society was founded in 2006 with the purpose of the promotion, development, and enjoyment of pastel art.

*Our deepest appreciation to Deborah Jones and the Burke Arts Council for graciously hosting this exhibition.*

### **JUROR, DAWN EMERSON**

#### **Juror's Statement**

My criteria for judging a show is based on selecting pieces that show mastery of the pastel medium, beautiful composition, variety in the way the medium is used, and a quality of magic that makes the artist's vision unique. The versatility of pastel is expressed in spades in this show, and I am excited to see the work in the flesh!

#### **About Dawn Emerson**

Dawn's career began with graphic design and illustration in the late 70's. Her professional career in book design and art direction gave way to a passion for teaching art to children in the public schools when she moved westward with her family in 1985. Since then, Dawn has taught pastel, drawing, and design classes to all ages and levels in the US and Canada, and at the Community College of Central Oregon where she now lives. In 1991 she fell in love with pastels after meeting portrait artist Harley Brown, and has spent the past 25 years creating art, teaching, and working to push the boundaries of the pastel medium.

Since 2008 Dawn has expanded her work to include printmaking, which has led to new and exciting directions for her art expression. Dawn has produced three instructional DVDs, and has just released a book for North Light titled "Pastel Innovations." Her work and articles are included in many art books and magazines, and she has been a signature member of the Pastel Society of America since 1997. For more on Dawn Emerson, visit her website at [dawnemerson.com](http://dawnemerson.com)



**ANNE ALLEN**

Hendersonville, NC

***Meet Me in Butchart Gardens***

13x10 Inches

**\$380**



**ELAINE AUGUSTINE**

Florence, AL

***Color Frenzy***

11x8 Inches

**\$750**



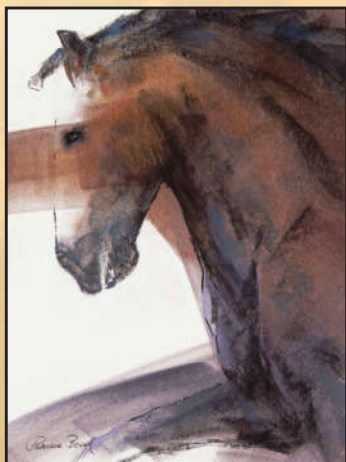
**PATRICIA BEVAN**

Blacksburg, VA

***Fly Like the Wind***

18x19.5 Inches

**\$700**



**PATRICIA BEVAN**

Blacksburg, VA

***Iconic***

13.25x10 Inches

**\$350**





**CATHYANN BURGESS**

Hendersonville, NC

***Long Division***

22x25 Inches

**\$1,200**



**CATHYANN BURGESS**

Hendersonville, NC

***Yellow Path***

22x26

**\$800**



**LUCY COBOS**

Asheville, NC

***My Lolita***

18x19 Inches

**\$5,000**



**DIANA COIDAN**

Raleigh, NC

***All My Ducks in a Row***

24x30 Inches

**\$1,100**



**BETTE CONINGSBY**

Boynton Beach, FL

***Homeward Bound***

12x18 Inches

**\$550**



**BETTE CONINGSBY**

Boynton Beach, FL

***Spring Color***

12x18 Inches

**\$550**



**ELLEN CORBET**

Fairview, NC

***On the Grass in the Moonlight***

12x16 Inches

**\$300**



**SHERYL DANIELS**

Johnson City , TN

***Afternoon on the Holston River***

17x19.5 Inches

**\$350**



**MARCIA DONLEY**

Zionville, NC

***Along the Cove Creek Road***

10x14 Inches

**\$1,450**



**MARCIA DONLEY**

Zionville, NC

***Snow in the Bougainvillea***

10.5x13.5 Inches

**\$1,250**



**MARILYN DWYER**

Maryville, TN

***Late Summer-Little River Road***

18x29 Inches

**\$550**



**MARILYN DWYER**

Maryville, TN

***Erin's Porch***

13x12.5 Inches

**\$375**



## **TRACY FERENCE**

Abingdon, VA

***This is Marshall***

21x22.5 Inches

**\$950**



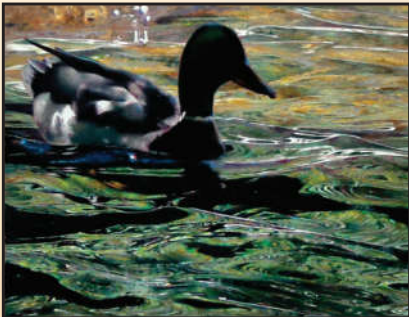
## **TRACY FERENCE**

Abingdon, VA

***Freedom***

25x26 Inches

**\$1,500**



## **J KAY GORDON**

Weaverville, NC

***In Cottonwood Shadows***

17x22 Inches

**\$4,000**



## **ALEC HALL**

Hendersonville, NC

***Newton's Apprentices II***

20x16 Inches

**\$1,000**





**ALEC HALL**

Hendersonville, NC

***Pulling Hard II***

20x16 Inches

**\$1,000**



**JUDY HARRON**

Greensboro, NC

***Garden Stained Glass***

18x24 Inches

**\$875**



**SUZY HART**

Easley, SC

***Within Mother Emanuel***

28x21 Inches

**\$4,500**



**SUZY HART**

Easley, SC

***Eurydice***

28x21 Inches

**\$3,600**





**L. HUDSON-TOLLES**

Cleveland, NC

***Ancestry Passing By***

14x18 Inches

**\$1,800**



**BEVERLY KIES**

Hendersonville, NC

***Round the Bale***

16x17 Inches

**\$995**



**TONI LINDAHL**

McLeansville, NC

***Pond Abstractions***

18x24 Inches

**\$850**



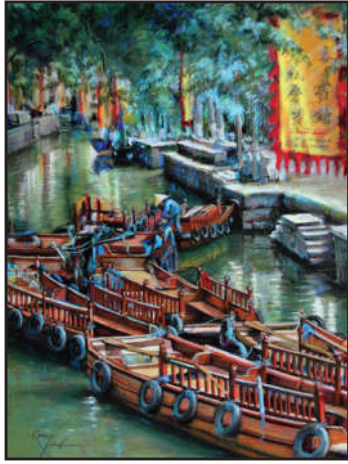
**TONI LINDAHL**

McLeansville, NC

***The Great Escape***

16x20 Inches

**\$750**



**LUANA LUCONI WINNER**

Raleigh, NC

***China Series: Boats on Canal,  
Tong Li, Suzhou, China***

16x12 Inches

**\$1,200**



**LUANA LUCONI WINNER**

Raleigh, NC

***China Series: Restaurants on  
Canal in Tong Li, Suzhou, China***

18x24 Inches

**\$2,100**



**LINDA MEDDERS-JACKSON**

Cross, SC

***By Dawn's Light***

10x8 Inches

**\$1,025**



**LINDA MEDDERS-JACKSON**

Cross, SC

***Winning Charms***

11x7 Inches

**\$1,250**



**MERYL MEYER**

Weaverville, NC

***Senor Toucan***

12x15 Inches

**\$525**



**CAROLYN MOLDER**

Marble, NC

***Harvest Time***

16x20 Inches

**\$500**



**DIANE PIKE**

Denver, NC

***Total Chaos***

16x20 Inches

**\$1,100**



**CHERYL POWELL**

Winston Salem, NC

***Judith Baking***

12x12 Inches

**\$725**





**CHERYL POWELL**

Winston Salem, NC

***Crossing to Picton***

14x18 Inches

**\$720**



**GARY RUPP**

Winter Park, FL

***Peace Like a River***

16x12 Inches

**\$875**



**GARY RUPP**

Winter Park, FL

***Abundance***

12x16 Inches

**\$875**



**DONNA SCHULTZ**

Durham, NC

***2Blue***

20x14 Inches

**\$600**



**ZOE SCHUMAKER**

Hiawassee, GA

***Barnyard Strut***

11x14 Inches

**\$500**



**SUSAN SINYAI**

Asheville, NC

***Black & White & Red All Over***

18x12 Inches

**\$1,355**



**SUSAN SINYAI**

Asheville, NC

***The Approach***

13x19 Inches

**\$1,375**



**ANNE STRUTZ**

Charlotte, NC

***Story Time***

13x10 Inches

**\$450**



## **ANNE STRUTZ**

Charlotte, NC

### ***Drummer Boy***

13x12 Inches

**\$400**



## **SUSAN VOORHEES**

Asheville, NC

### ***Victorian Bonnet***

21.5x17.5 Inches

**\$1,200**



## **PAMELA WINKLER**

Asheville, NC

### ***Unattached***

30x15 Inches

**\$1,825**

Special thanks to the show and workshop chair, Zoe Schumaker, for her hard work and expertise that have made this exhibition possible. Much gratitude, too, to the APS Board, and to members who have so generously volunteered their time...and especially to Suzy Hart, Nancy Clausen, Jim Hefley, Kay Gordon, Susan Sinyai and Meryl Meyer.



## **About The Appalachian Pastel Society**

The Appalachian Pastel Society is centered in western North Carolina (Asheville area) and serves members from North Carolina, Tennessee, South Carolina, Georgia, Virginia and other states.

APS offers bi-monthly informational programs and demos on pastel techniques, workshops, juried and non-juried exhibition opportunities for members, and sponsors National Juried Shows open to all.

As its specific stated mission, the Appalachian Pastel Society was formed in 2006 to promote an understanding and appreciation of pastel painting throughout the Appalachian Region, by:

1. Elevating the standards of excellence for the benefit of artists, collectors, and those who appreciate the medium;
2. Promoting educational activities to benefit the artistic and professional goals and abilities of its members;
3. Fostering, encouraging, and developing general public appreciation for the pastel medium through sponsoring speakers, classes and exhibits, artists in-the-schools, and publicity.

APS meets the 2nd Saturday of January, March, May, July, September and November. Follow our website and Facebook pages for the current schedule of programs and events.

For a membership form, newsletters, and many valuable art resources, see our website...[www.appalachianpastelsociety.org](http://www.appalachianpastelsociety.org)

**FOR MORE INFORMATION ABOUT THE ARTISTS IN THIS SHOW,  
SEE THE BOOK OF ARTIST BIO'S THAT ACCOMPANIES THE SHOW.**

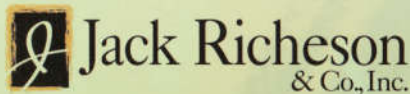
# appalachian

■ ■ ■ pastel society

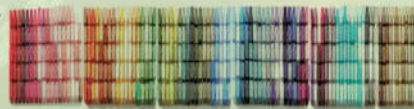
WE WISH TO THANK OUR GENEROUS  
DONORS AND SPONSORS

Lorraine King Pastel  
Award

Great American  
ART WORKS



terry  
ludwig  
PASTELS



Dakota Art  
[www.dakotaartstores.com](http://www.dakotaartstores.com)



North  
Carolina  
Arts  
Council  
*Fifty years  
of leadership*