

Letter from the President— Will Evans

Dear Friends and Members of APS:

Fall is upon us, leaves are changing their colors, and temperatures are falling ... reminding us to finish garden chores, bring plants inside and find fewer reasons for NOT being in the studio.

This is my first newsletter, taking the reins from Gary Rupp and thanking him for his years as president and setting the bar ridiculously high.



Like so many of the APS members, I'm on a journey that started years ago as a kid that liked to sketch, through different art experiences in college, a number of decades of work and family distractions and finally picking up a pastel and discovering, in a clumsy way, a new world.

By taking workshops and demos, becoming involved in APS, visiting museums, reading and learning from fellow artists at all levels, I've followed the crumbs that have led me to where I now find myself.

My thoughts today are about the Van Gogh Show in Columbia S.C. (October 4, 2019- January 12, 2020). It is such an unique opportunity to see his works (and in this case, his inspirations) in a nearby venue. I've read several books about his life and if there ever was a suffering artist, that is Vincent!

Born in 1853, he died from gunshot wounds in 1890, at age 37. Yet in that time, he became a master of his art. His troubled life, his numerous dead-end occupations (missionary was one!), grinding poverty, and mental challenges all formed him. I urge everyone to read his story to better understand the man and celebrate his triumphs. In the last ten years of his life he created over 2,000 artworks, including more than 900 oil paintings, most from the last two years of his short life. In comparison, Leonardo da Vinci is said to have completed only 14 paintings in his long life (67), but that's a story for another time.

So join me in the studio, celebrate the painting process and create beauty. Until the next time, make some dust!

Will Evans
APS President

In this Issue

President 's Letter	1-2
APS Program	3-4
Direction to Meeting	4
September Meeting Highlights	5-10
New Board Officers	11
Artist of the Month	12-14
Big Little Show Recap	15-16
2020 National Show	17
National Show Artist	18-19
New APS Shows	20
Plein Air Event	21
Van Gogh Trip Recap	22-23
Art Exhibitions	24
Member News	25-31
Margulis Workshop	32
Upcoming Classes	33
APS Library	34
APS Calendar	35
Your Own Website	35
Board Members	36
Membership Application	37

The APS general meeting is scheduled every second Saturday of the month: January, March, May, July, September, and November, from 10 am - 12 pm Any interested in pastel are welcome.

Appalachian Pastel Society

November 9, 2019 Meeting

10 a.m. – 12 noon

Grace Community Church

495 Cardinal Road, Mills River, NC 28759

APS presents— All Framed Up!

“Presenting your Pastel Paintings in the Best Light”

We are all painfully familiar with the difficulties of framing our pastel works. Learn about the best framing methods for pastels and get your framing questions answered by this informative panel presentation! Deborah Moore from Framed on 4th (Hendersonville) and Jennifer Pearson of Frugal Framer (Asheville) will present best methods for framing and discuss framing aesthetics. APS Member Chris Robinson will share information on frugal DIY framing tips. APS Members Beverly Kies, Cathyann Burgess and Susan Voorhees will field your framing questions.



*Deborah Moore
Framed on 4th*



*Jennifer Pearson
Frugal Framer*



Chris Robinson



Cathyann Burgess



Beverly Kies



Susan Voorhees

The morning presentation is **free** and open to the public.
Come join us! No afternoon workshop.

Continued on page 4 3

Framing Extravaganza – Guest Speakers

Deborah Moore - Framed on 4th - 135 4th Avenue West, Hendersonville, NC

Deborah takes a fresh approach to framing, using design concepts and conservation-quality framing. A veteran in the custom framing industry, she owned and operated three frame shops over the past 30-plus years. Her Buckhead store was voted by DECOR magazine as one of the top frame stores in the country. Deborah now makes her home in the mountains near Hendersonville.

Jennifer Pearson - Frugal Framer – 95 Cherry Street, Asheville, NC

After earning her BS in Interior Design, Jennifer worked on numerous commercial projects for several architectural firms. Her move to Asheville brought her into the framing world, where she found the business of custom picture framing to be the perfect marriage of design and detail.

APS Members on the Panel

Christie Ann Robinson

A regular contributor to APS activities, Christie will share with us how she frames her own artworks and methods to help control framing costs.

Susan Voorhees

Adept in multiple art mediums, Susan prefers to frame her own work. Learn how she successfully cuts her own mats and creatively frames works of all sizes.

Cathyann Burgess

A Manhattan-born artist, teacher, and juror, CathyAnn is happily transplanted in Hendersonville. She has worked with many framers to ensure her numerous show entries were properly presented. Her insight on image aesthetics will be very valuable.

Beverly Kies

Beverly's beautiful pastel works sing with color. And she has won numerous awards with her richly-pigmented paintings. She will offer ideas on framing without mats, which can give your work a decidedly modern appearance.



DIRECTIONS TO APS MEETINGS AT GRACE COMMUNITY CHURCH

495 Cardinal Road, Mills River, NC 28759

From I-26, take Exit 40 for the Asheville Airport. Drive 3.3 miles on NC-280W/Airport Rd. passing the Asheville Airport. Turn right on Cardinal Drive, between the Land Rover dealer and Grace Church (up on the hill). Turn left at the top of the drive into the church parking lot.

Go to the far left side of the Church building to the stand-alone classroom building. Refreshments will be served. Bring a friend!

Recap from September Meeting – Gary Rupp

Color Temperature was Gary's topic and he gave us great information to achieve better color balance in our paintings. His handouts and presentation boards were inspirational – Thank you, Gary, for all the extra effort you put forth to make this a great demo and workshop!



Continued on page 6

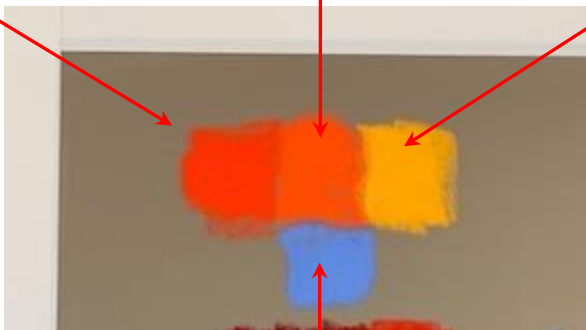
Recap from September Meeting – Gary Rupp

Still Life for the Morning Demo:



Color selections for the painting – Limited palette selection!

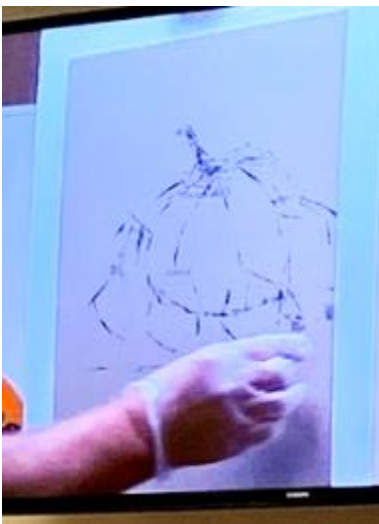
Cooler Color Touchstone Color Warmer Color



Color complement to touchstone color for underpainting



Alcohol wash on underpainting

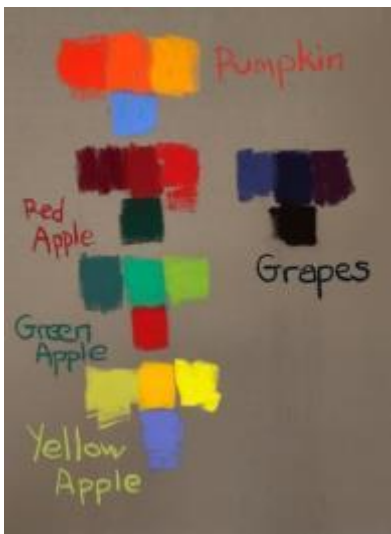


Still life elements rough-in



Complements for underpainting

Recap from September Meeting –Gary Rupp



Color selections ...



Local & secondary colors ...



Building color layers ...

Tips from Gary...

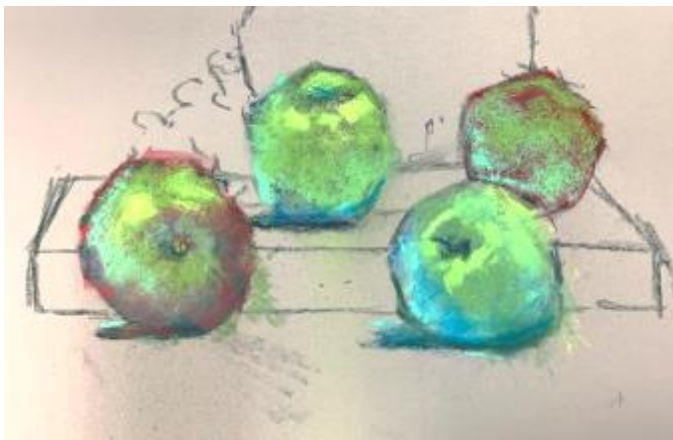
- Color temperature and concept of simultaneous contrast are good topics to explore on-line to gain better understanding of how colors work in your painting.
- Making color charts is great practice to understand how colors interact.
- Make materials selections to help your processes, i.e. neutral ground like Pastel Premier's Italian clay color paper.
- Touchstone color = the local color of the subject ...
 - #2 cooler color than touchstone
 - #3 warmer color than touchstone
 - Then select complement of the touchstone.
 - This becomes your underpainting color.
 - Match complement to value of the touchstone color.
- Test colors on samples of your ground before going to your final painting support.
- Paint to make your soul shiver.



Completed Painting

Afternoon Workshop with Gary Rupp

Photos from the Workshop ... Exercises before beginning to paint.



Continued on page 9

Afternoon Workshop with Gary Rupp

Photos from the Workshop ... Sunflower demo.



Continued on page 10

Afternoon Workshop with Gary Rupp

Finished Painting from the Workshop ...



New APS Board Officers

Our Nominating Chairman, Judy Harron, assembled an excellent Slate of Officers for the coming year. These Officers were voted in at the September meeting. And, we thank the departing members for their dedication and hard work for the Society. Many thanks for a job WELL DONE!

Departing Board Members:

Alec Hall – Treasurer

Bobbie Kelsten – Membership and Communications

Zoe Schumaker – Ad Hoc Member

Gary Hall - President

And now ... introducing, our new board members and their favorite pastels!



Will Evans – President

NuPastels are my “go-to” for preliminary blocking in and final highlights.

Love my Girault pastels for laying down big shapes as the painting is starting to develop, as well as for finishing.



Nancy Clausen – Vice President

One of thirteen founding members of APS and the first secretary. We have changed a lot over the years. My favorite pastels are

Faber-Castell for hard pastels and Great American and Schminke for soft pastels.



Gary Rupp – Treasurer

Gary says he never met a pastel he didn't like, so it's difficult to pick a favorite.

Looks like it's a three way tie: Unison, Terry Ludwig and Sennelier.



Michelle Breen – Secretary

I love Sennelier pastels, but Great American pastels hold a special place in my heart. They are made in Cincinnati, where I lived and worked for 32 years. Visited their warehouse many times! Their colors are labeled with their frequency on the electromagnetic spectrum.

Very cool for a former biology teacher!

Artist of the Month — Alison Webb



Inspired Landscapes

- By Alison Webb

Alison Webb has lived in North Carolina for seven years and before that resided in New York City. She travels widely, painting on location as well as in her Asheville studio.

Raised in the mountains of Tennessee, Alison was educated at New York University, the University of North Carolina at Chapel Hill, and Skidmore College. In the international textile industry, she was a design forecaster and color expert for major corporations.

“The beauty of the land is the inspiration for my paintings. Those moments when a scene takes my breath away because of its “perfectness” compel me to take brush to canvas. I can’t imagine not painting.”



Night Pond
by Alison Webb

Artist of the Month — Alison Webb



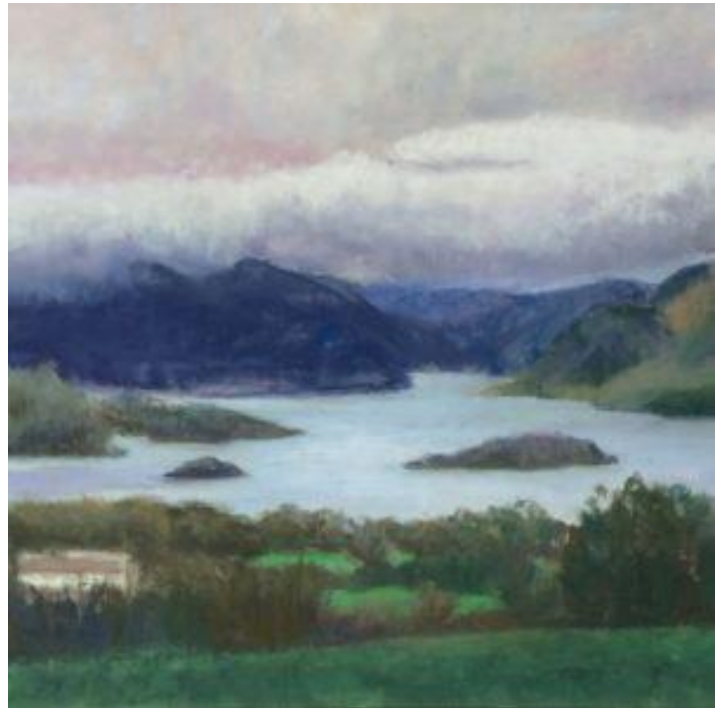
Alison has also studied at the Fine Arts League of the Carolinas; Art Workshop International – Assisi, Italy ; Peninsula School of Art – Door County, Wisconsin; and is currently with landscape artist Mark Henry of Weaverville Fine Art Studio.

In addition to being in several private collections, her work has been shown locally in the Grove Arcade, the Osher Institute at UNCA, the Windsor Hotel – Asheville, and the Corner Kitchen in Biltmore Village. Beginning this month, her work will be represented by the Asheville Gallery of Art.

Alison is a juried member of the Pastel Society of America and the Association of American Women Artists. Her work received a Merit Award from the statewide show of the North Carolina Pastel Society in 2018.



Early Glimpse by Alison Webb



Lake Lean View by Alison Webb

Artist of the Month — Alison Webb



Mountain Storm Coming by Alison Webb

“My years working with color in the textile business helped prepare me for painting with oils, but the challenge of capturing the subtle nuances of nature are a continuing exercise in creativity.”

To see more of Alison’s work, visit her web site at:

www.alisonwebbstudio.com



Homage to the River
by Alison Webb

“Big Little Paintings”

An Exhibition of the Appalachian Pastel Society at BlackBird Frame & Art, Asheville

October 3- 30, 2019

At the opening reception on October 10th, Anne Allen welcomed artists and guests to the 2019 APS Non-juried Member Exhibition. Anne is the APS board chair of non-juried exhibitions, and she co-chaired the member show with APS member Meryl Meyer.

Anne’s opening remarks at the reception began with a quote from Henri Moore, 20th century British sculptor:

“To be an artist is to believe in life.”

The show featured works of art by 34 member pastel artists who clearly believe in life. Painting topics covered pure emotions, nature, animals, flowers, and portraiture. There were many paintings by new members, exhibiting for the first time as well as award-winning artists from the pastel society.”



“Big Little Pastel Paintings”



Applause, too, was given to John and Pat Horrocks, co-owners of BlackBird Frame & Art. John recognizes our passion and believes in APS as a non-profit organization, and in each of us as a participating artist. APS is grateful to John for the collaboration, for designing the Big Little Paintings postcard for advertising, and for hanging the show in the Asheville frame studio. It was beautifully grouped by subject, theme and color. Smaller paintings were elegantly placed on easels, mantels and tables.

The spotlight glowed brightly on Shannon Gallagher, of the Open Hearts Art Center, as she accepted a check from APS. Open Hearts is a nationally-recognized non-profit organization which serves adults with different learning abilities through exposure to visual and performing arts. APS volunteers were invited to present a pastel painting workshop inspired by the circus paintings of Marc Chagall. The APS check, representing a portion of the show entry fees, will help adult artists at Open Hearts to find and stay on their path.

Anne's closing message was: "To all artists, believe in life ... in art ... and in *your* art."



Update: Key Information for the 2020 National Show

Our 2020 National Show is rapidly approaching. Mark your calendars with this important information so you don't miss any of the deadlines.

Show Dates

September 15 – October 24, 2020
John M. Crawford, Jr. Gallery
Asheville School
Asheville, NC



To be juried by Nancie King Mertz

National Show Workshop

Tuesday, September 15 through Friday
September 18, 2020
To be held in Asheville, NC. Registration details
will be announced in January 2020..

Registration opens February 3, 2020 for APS
members. Opens to other societies February
17. To the public, March 2, 2020.

Workshop Instructor: Nancie King Mertz

Show Prospectus

Available April 3, 2020
Entry details and shipment of accepted
works will be detailed on the prospectus.

Show Entry

Opens May 1, 2020 and closes July 3, 2020
Entries will be made online. Be prepared to
supply a written bio with your registration.

Show Opening Gala

Saturday, September 19, 2020



For insight on Nancie's working style – see the
next two pages!

2020 National Show Workshop Artist Nancie King Mertz

Excerpt from an article featuring Nancie King Mertz, which appeared in the October 2019 issue of Artists Magazine. Reprinted with permission from Peak Media Properties.



Chicago Down Low (part of a series) (NKM, 2019)

*Swift
&
Sure*



We are fortunate to have Nancie as our workshop instructor for the 2020 National Show. Here are a couple of her painting insights to get your creative juices flowing. Watch for the workshop registration announcement in January. It will fill quickly and you won't want to miss out!.

Artists Magazine: What decisions do you make about color before you begin a painting? Do you paint the colors you see or do you have a separate color plan in mind?

NKM: I always say that I paint what I see, but I do push the color and make value decisions to push structures and elements into the distance. When painting an urban scene, I often determine the warm sunlit side and balance it with a complementary cool side (see Chicago Down Low, at right).



Chicago Down Low

2020 National Show Workshop Artist Nancie King Mertz

Artists Magazine: Walk us through your painting process. How does an idea transition from out-in-the-world to a completed painting?

NKM: Nearly all of my paintings begin with a “tick-mark map”—the initial charcoal notes I make on the surface to include all the desired elements in the composition. This quick map helps me get the correct perspective and the right scale before I begin adding pigment. Often when artists just start right in painting, they run off the surface, omitting some of the elements that are key to the composition. My map helps me avoid this blunder.

From the quick map, I begin to place all the darks throughout the piece. For pastels, I lightly wash in these darks with denatured alcohol and a fan brush. For oils, I scrub them in with turpentine. Whether working in oil or pastel, it’s important to keep the initial darks transparent, which makes them appear much richer. Throughout the process I keep the hoped-for outcome in my mind, striving to make the painting match my vision— either improving my poor photo or capturing the scene as it inspired me when I first set up my gear on site. That image pushes me forward to rapid completion. (See Start to Finish, below.)

← Start to Finish →



Whether working in oil or pastel, Mertz’s process is the same. First she draws a charcoal tick-mark map on her painting surface to establish the composition (upper left). She then sets the darks, washing them in with denatured alcohol for pastel (upper middle) or scrubbing them in with turpentine for oil. From that point, she develops the mid-tones and lights, as seen in the remaining progressive images of **Come From Away** (pastel on mounted board, 24½x28½).

Two New Show Opportunities for 2020

2020 APS Signature Member Invitational

#1

A new APS exhibition is planned in 2020 to promote the recognition of APS Signature Members. This invitational will spotlight APS Signature Members in a one-day exhibit of paintings in the Grace Church education center. The purpose of the show will be to recognize APS award-winning members, share information on membership levels as outlined in the APS bylaws, and encourage all APS members to actively participate in the membership levels program. APS currently has eleven Signature Members.

Learn how APS members can begin earning points toward an APS Special Membership level at:

<http://www.appalachianpastelsociety.org/wp-content/uploads/2019/10/APS-SPECIAL-MEMBERSHIPS.pdf>



Strut by Barbara Kitty Williams



The Blue Motorcycle by JK Gordon

2020 APS Non-juried Member Exhibition Announced

#2

The next non-juried member exhibition is being planned for June, 2020. Veteran award-winning members of APS will be exhibiting alongside new APS members who are new to shows. Grace Gallery, Grace Church, of Mills River will host the 2020 exhibition. The show prospectus and entry calendar will be available in January 2020. New membership applications and APS membership renewals need to be in place and paid prior to entering the all-member show. Watch the APS January newsletter for further information about entering the show.

Plein Air Outing —Mount Pisgah Inn

Saturday, October 12th, was a perfect day for drive on the Parkway out to visit Mount Pisgah Inn. And it was a perfect day for a paint-out, too - 10 people certainly thought so! 7 artists and 3 friends - a mix of Meetup and APS members - enjoyed painting on a truly perfect day. Great weather, combined with incredible mountain views, resulted in several beautiful works.

The collage features a central map of the Mount Pisgah area. Key locations marked on the map include Mills River, Yellow Gap Rd (7.4), Little Bald Mtn, Picnic Area, and Pisgah Inn. The map also shows distances along the Mt. Pisgah Trail (1.6, 1.1, 1.0) and nearby landmarks like USFS 1206 and 408. Three photographs are included: a woman in a purple shirt holding a framed landscape painting, a person painting outdoors on a hillside, and an art setup with easels and a camera. A large, detailed painting of a mountain landscape with a cloudy sky is also shown.

This was the last plein air event for 2019, with more to come for 2020. Watch the newsletter and APS Mail for future announcements.



APS Field Trip – Columbia Museum of Art



Self Portrait by Vincent Van Gogh

Although Vincent Van Gogh only painted for a little over a decade, and died young at age 37, he is considered one of the best-known artists in history. This would have come as a complete surprise to him, as he sold only one major painting during his lifetime. But what a life! He created over 1,000 drawings, 150 watercolors, 9 lithographs, an etching and over 900 oil paintings.

The Columbia Museum of Art currently has on display a beautifully curated exhibition entitled *Van Gogh and His Inspirations*. This collaboration features Van Gogh's own works, on loan from a number of well-known institutions. Also shown are the works of other artists who inspired him: Anton Mauve, Dupré, van Rappart, Monticelli, Daubigny, Boudin, Jacque Michel and many others. Each painting is labeled, describing how that painting/artist affected Van Gogh. Several have pictures of Van Gogh's own interpretation of the painting.



Wheatfields by Vincent Van Gogh

A group of 20 APS members, Meetup members and friends had a private tour of the exhibition. The rest of the day was spent enjoying the Museum's own collection in the upstairs galleries



Weaver by Vincent Van Gogh



Grand Bérnaise Weaver by Léon Augustin Lhermitte

Van Gogh and His Inspirations Exhibition



Rembrandt Harmanszoon van Rijn
Dutch, 1606-1669

The Raising of Lazarus, 1632.
Etching and engraving
Gift of Arthur Pinner

In this dramatic moment, Rembrandt portrays Jesus of Nazareth calling out, "Lazarus come forth." Focused by the work's natural rock formations and spotlighted from below, Lazarus rises from the dead. The faces of the surrounding women are captured in expressions of joy, amazement, and fear. The painterly quality of this etching, due to Rembrandt's finer technique and play of light and dark, caught the attention of the art world. Much of Rembrandt's international fame during his lifetime was based on the dissemination of his prints and etchings. During his voluntary hospitalization at Saint Rémy in 1890, Van Gogh would paint a colored interpretation of this 17th-century print. While Rembrandt used the technique of *chiaroscuro* (light/dark) to define the three-dimensional space of Lazarus' burial tomb, Van Gogh chose to use a combination of blues, greens, yellow, and oranges to "speak of the same thing expressed by the chiaroscuro of the etching."

Vincent van Gogh
The Raising of Lazarus (after Rembrandt), 1890
Oil on paper
The Gogh Museum, Amsterdam
© Museum van Gogh Foundation

This Rembrandt etching and engraving is rarely let out on display. However, it is on display for this exhibit.

Displayed next to the description of Rembrandt's **Raising of Lazarus**, c. 1632, is Vincent's **Raising of Lazarus (after Rembrandt)**, c. 1890

Raising of Lazarus by Rembrandt van Rijn

One of the most fun parts of the exhibition was being able to dress up and pose as though plein air painting on Van Gogh's *Flower Beds in Holland*, c. 1883. The original of the painting, on loan from the National Gallery in Washington, DC, is on display as part of the exhibition.



You may not be a fan of Dr. Who, but do watch this video snippet from the episode about Vincent Van Gogh.

Amazing ... and touching. This is why each of us, no matter our skill level, needs to continue painting. So we can touch the lives of others.

Copy link to browser: www.youtube.com/watch?v=ubTJI_UphPk

Art Exhibitions – Not to Miss!

The Touch of Color: Pastels at the National Gallery of Art

September 29, 2019 – January 26, 2020

West Building, Ground Floor, East Outer Tier

If you are visiting our Nation's capitol soon, be sure to take in this show at the National Gallery. Featuring 64 exquisite examples drawn entirely from the permanent collection, **The Touch of Color: Pastels at the National Gallery of Art** traces the history of pastel from the Renaissance to the 21st century and examines the many techniques which artists have developed to work with this colorful medium. Because pastel is such a fragile medium, these works have seldom, if ever, been exhibited. If you can't visit, at least listen to the audio cast from the show opening event. Use the link below for the audio cast.

<https://www.nga.gov/exhibitions/2019/touch-of-color-pastels.html> Then scroll to bottom of page and click on Press Event.

Study of Flesh Color and Gold by William Merritt Chase



Self Portrait by Vincent Van Gogh

Van Gogh and His Inspirations

October 4, 2019 - January 12, 2020

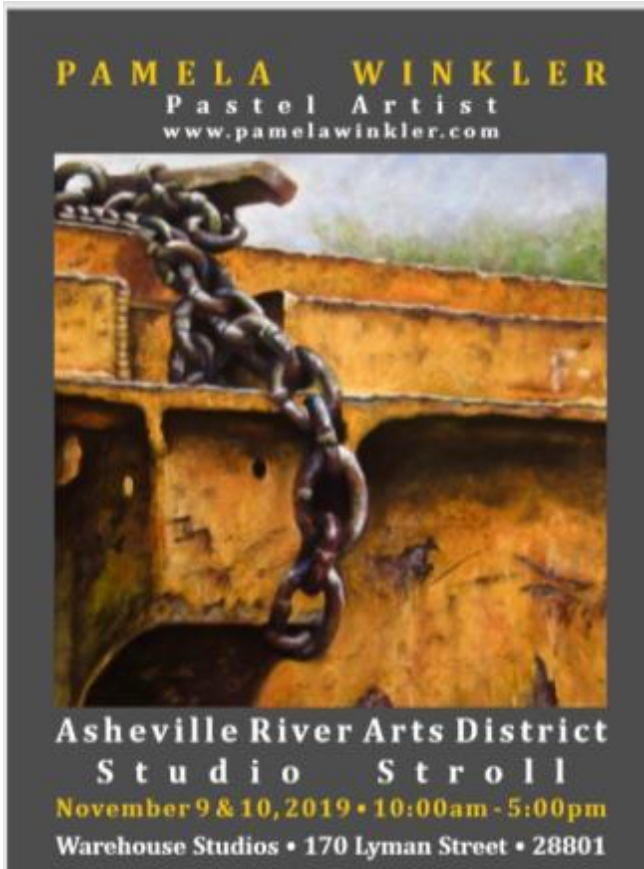
Columbia Museum of Art, Columbia, SC

If you missed the APS field trip to this show, then you missed a real treat. It's not too late to schedule a visit as the show runs through January 12, 2020.

Tickets are \$15.00 and give you access to all galleries in the museum. The tickets are not timed, so you can view the exhibit at your leisure. The show features Van Gogh's works, alongside artwork which inspired him in his own painting efforts. Showing only in Columbia, SC.

Listen to this podcast before you go! Copy link into browser.
https://fineartconnoisseur.com/2019/09/van-gogh-and-his-inspirations/?utm_source=ActiveCampaign&utm_medium=email&utm_content=Advancing+the+Cause+of+Figurative+Art&utm_campaign=FAT+10-24-19

News of APS Members



APS Member Pamela Winkler is participating in the Asheville River Arts District Studio Stroll. Her studio is located at 170 Lyman Street, RAD.

Dates are November 9th -10 from 10 am to 5 pm.
Be sure to stop by and say hello!

Most galleries in RAD will be participating in the River Arts District Studio Stroll. You can see the works of other **APS members** at the following studios:

Lucy Cobos

Pink Dog Creative 342 Depot Street, RAD

Anne Allen

310 Art Studio, 191 Lyman Street, RAD

APS Member **Hyn Patty** has a solo show opening next month at Highlands Sotheby's International Realty 114 N 4th Street Highlands, NC.

The show opens November 1, 2019 and runs through March 30, 2020. An opening reception will be on November 1st, from 4:00 pm to 5:30 pm. The exhibit features a selection of her paintings, both oils and pastels, of local landscapes and some portraiture of both animals and people. The show is sponsored by the Bascom Center for the Visual Arts, Highlands, NC. All pieces in the show are available to purchase.

Additionally, Hyn is opening a second art studio (away from home) in the River Arts District of Asheville, NC with Foundations Studios at 27 Foundry Street. Congratulations, Hyn!



Harlequin Great Dane 'Mac' by Hyn Patty

News of APS Members



Giverny by Eileen Wilhem

APS Member Eileen Wilhem has been very active this summer and fall. She now has paintings on display in the following galleries:

- Red Dog Gallery in Winston Salem
- Salem College Fine Arts Center
Velam Mason Davis Gallery - Winston Salem
- Every Corner Gallery - Winston Salem

Congratulations, Eileen!



Ghost Ranch by Eileen Wilhem



Popping Up Poppies by Eileen Wilhem

**ASHEVILLE
ART MUSEUM**

www.ashevilleart.org

The newly-renovated Asheville Art Museum is reopening November 14! Adult art classes will be offered in the new year including drawing, watercolor, and soft pastel. **APS member Terrilynn Dubreuil** will be teaching the pastel classes. Watch the web site for class announcements.

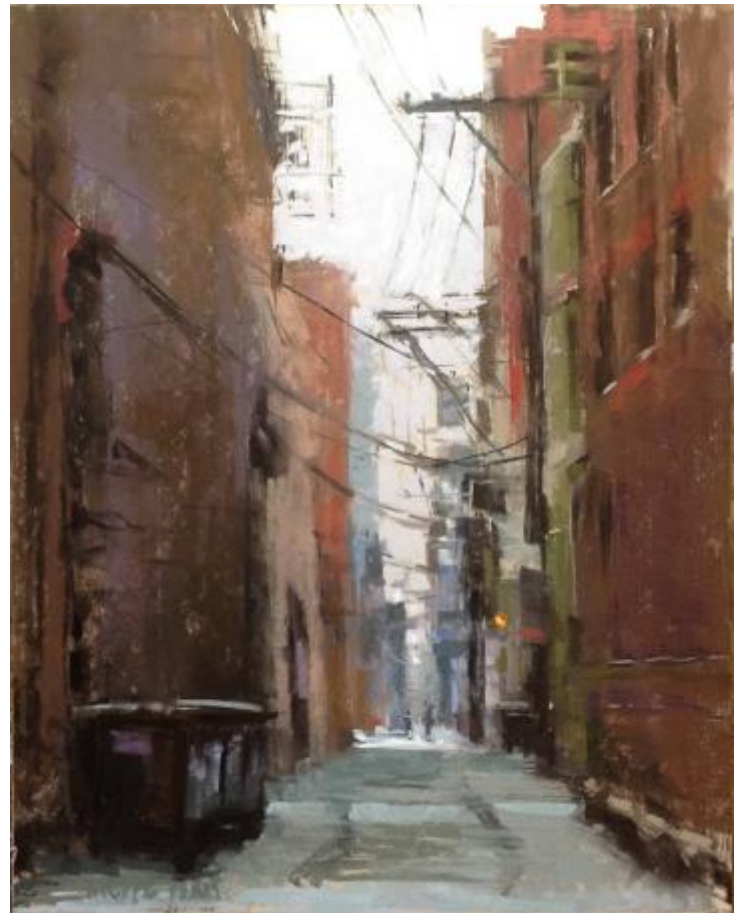
News of APS Members

APS Member **Nancie King Mertz's** painting **Alley Off Elm**, won Best in Show at the Connecticut Pastel Society Show. Congratulations, Nancie!

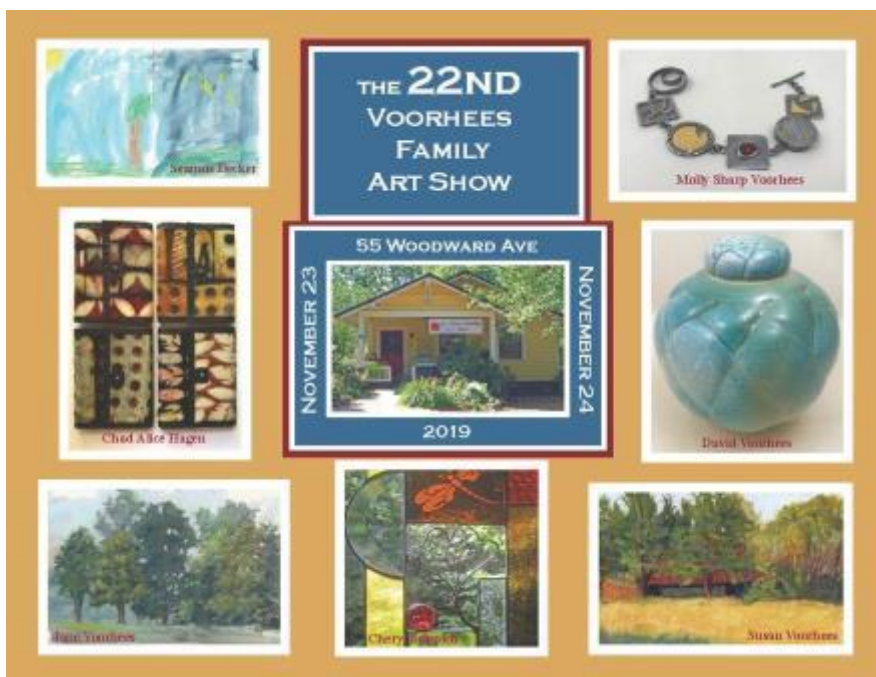
Nancie was also juried into the IAPS Web Show, the Degas Show and 3 paintings are going to the Chicago Pastel Painters Show! She is teaching a 3 day studio workshop in Toronto in November. Check her website - there might be a spot or two open still!

Congratulations, Nancie!

www.nanciekingmertz.com



Alley Off Elm by Nancie King Mertz



22nd Voorhees Family Art Show. November 23 & 24. Sat 10-5. Sun 10-4. At the home of APS member Susan Voorhees. [55 Woodward Ave, Asheville](#). The show includes artwork by family members Susan Voorhees, David Voorhees, Jane Voorhees and Molly Sharp Voorhees. Guest artists include Cheryl Stippich and Chad Alice Hagen. Artwork featured will include pastels, watercolors, pottery, jewelry, cards, book arts, felt art and stained glass.

News of APS Members



American Abundance by Barbara Kitty Williams



Tucked In by Barbara Kitty Williams



Copper and Grapes by Barbara Kitty Williams

APS Member **Barbara Kitty Williams** has pastel work accepted for the 34th National Society of Artist Juried Show in Galveston, TX.

She also won a First Place award for her pastel, "**Copper and Grapes**", exhibited in the National Association of Women Artist in NYC juried exhibit titled *Small Summer Works 2019*.

The painting **American Abundance** was accepted for the juried Degas Pastel Society 21st Membership Show in November.

Congratulations, Barbara!

News of APS Members



Joy by Anne Strutz

APS Member **Anne Strutz** has had a very active year! She competed in Dueling Demos, painting flowers with Jude Tolar, at the IAPS convention in Albuquerque.

Anne also has numerous floral works on display at the Cecil Byrne Gallery in Charleston, SC.

Her painting – **Downstream** – was juried into the 35th IAPS Juried Exhibition Web Show.

And to top it off, her painting – **In the Flow** – won 3rd Place in the Animal and Wildlife Category of the 21st Annual Pastel 100 Competition.

Congratulations, Anne!



Downstream by Anne Strutz



In the Flow by Anne Strutz

3rd Place Winner – Animals & Wildlife – 2019 pastel 100!

News of APS Members



Ah Fall by Don Osterberg

APS Member
Don Osterberg 's painting
"Ah Fall" was selected for the
Autumn Color show at Art
Mob in Hendersonville.

Congratulations, Don!

*The holidays are rapidly
approaching - Thanksgiving,
Christmas, Hanukkah.
Whatever holiday you
celebrate, may you have a
joy-filled time with family
and friends!*

Note from the Editor:

Many thanks to everyone who submitted information for this issue. The paintings are beautiful!

As a reminder, please supply an image with your submission, as well as the title of the painting. The editor can not search for and use images from gallery sites as the web resolution is too small for publication.

Thank you very much!

News for APS Members

APS member Don Osterberg wanted to share information about lights for your studio. He recently purchased some lights at Joann's during a 1/2 price sale (says they are fairly expensive). They are OTTLites and are on clamps, movable arms, light weight, daylight color, and swivel. Don thinks they're the best thing since sliced bread!

Nice studio set-up, Don! Thanks for sharing this info!



Kate Thayer has a new email address.
It is: katethayer46@gmail.com

Please update your records.

Anne Allen and Meryl Meyer wanted to thank the many volunteers for their contributions to the Annual Member Show at BlackBird Frame & Art: ...

Cathyann Burgess, for helping with the arts workshop at Open Hearts Art Center.

Jane Voyles, For her help with Show publicity

Kay Gordon, Mentoring the Show team.

Christine Robinson, for managing Show social media.

Alison Webb, managing the reception

Lynn Ebanks, for technical support

Additional volunteers who received paintings and assisted with the reception were Julie Babb, Nancy Clausen, Claire Crook, Merrie Datin, Susan Griffis and Bobbie Kelsten.

Thank you!

Two-Day Workshop with Karen Margulis PSA, IAPS-MC



Expressive Pastels! How to Loosen up and Add spice to your Paintings

July 9-10, 2020

\$250 for APS Members
(for both days)

Location details to follow!

Workshop registration details will be
sent to APS members in November.

Mark your calendars as you won't want to miss Karen's visit with us in July 2020. In addition to the workshop, Karen will be our guest artist at the July 11th meeting. Her demo and afternoon workshop will focus on underpainting and the power it gives your paintings.



Artist Bio:

Karen Margulis was born in Connecticut and lives in Marietta, Georgia. Karen received her BA in Education from the University of Florida. Her primary medium is pastel, although she enjoys all mediums. She is a Master Circle recipient of the International Association of Pastel Societies and a Signature Member of the Pastel Society of America. She is also a Member of Excellence in the Southeastern Pastel Society. Her landscape and wildflower paintings have received recognition in many International exhibitions including PSA. Karen is a Daily Painter and art blogger. She teaches workshops and classes throughout the Southeast and online. To learn more about Karen, please visit her website: www.karenmargulis.com

Upcoming Classes

Pastels!! Something Old, Something New, Something You - with Susan Sinyai

Saturday, November 9 10 am – 4 pm

Class Cost: \$135.00 Class held at 310 Art, 191 Lyman Street, Asheville, NC

Register: <https://310art.com/2019-workshops-in-fine-art/something-old-something-new-something-you-pastels-with-susan-sinyai-november-9>

It's all about you! Delve into beautiful pastels, great for beginners and up.. Bring in objects personal and meaningful to you – books, pottery, scarves or other fabric pieces, jewelry, to suggest a few – to arrange in a pleasing composition. With your items, we're off to a beautiful still life pastel painting! Still life painting is the perfect subject for painters at any level, because all the artistic elements can be explored, but more importantly, manipulated by the artist. Let's make it fun – We will be working in a smaller format – 11x14, 12x16, (or 16x20 if you feel so inspired)- so that a piece can be completed. Pastels and paper provided, as well as a few extra props.

All Levels welcomed....Some drawing experience is helpful!

*Sign up Today! Only
a few spaces left!*

PASTEL WORKSHOP WITH LINDA COULTER



Two Days – November 8 – 9, 2019

9:30 am to 3:30 pm Daily

Linda is teaching workshops in her new home state – Tennessee!

\$120 for Tennessee Arts Association members

\$140 for non-members

Location:

9524 Shadow Lane
Knoxville, TN

This is a great opportunity for both experienced and beginner pastelists. Linda begins with a demonstration and then assists the class in their work. Learn about aerial perspective, composition, water, trees and reflections.

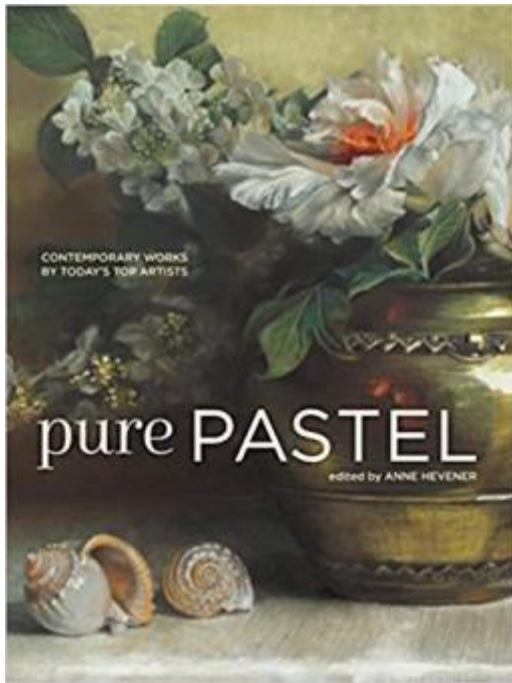
CONTACT:

Linda Coulter

email: lindacoulter@comcast.net

Or visit her web site for more details. www.lindacoulter.net

From the APS Library



pure PASTEL Contemporary Works by Today's Top Artists

Edited by Anne Hevener

Pastel is a medium like no other: pure color, unrivalled in its immediacy of application, and--in the hands of today's most talented artists--capable of astonishing feats of expression. A celebration of the best in contemporary pastel painting, Pure Pastel explores how artists are pushing the medium to new heights of innovation and creativity.

- Art from 100 of today's most recognizable names in pastel, hand selected and invited to participate by the editor of Pastel Journal.
- A dynamic range of styles and subjects, including still life, portraits, city scenes, animals, landscapes, abstracts and more.
- Firsthand commentary offers insight into the artists' work--how they use pastel to capture a moment in time, tell a story or evoke emotion.

Alice Alone

Yael Maimon

Ashkelon, Israel

Soft pastel on Seinnelier La Carte pastel card

25' x 18.5"

yaelmaimon.com

“Alice depicts my version of Lewis Carol’s seven-and-a-half-year-old Alice. To capture the inner spirit of young Alice, I used lots of luminous colors that express vitality and imagination. In the story, Alice goes through her journey practically alone, but she bravely rises to all challenges. No matter what age we are, in the big world with its strangeness and all the adventures it holds, we are Alice.”



APS Calendar

Future Meeting Schedules

Mark your calendars for the upcoming meetings and workshops. All planned guest artists have unique skills to share with you. Check their websites for further information. Workshop registration dates will be announced as they become available. Don't miss out!



JANUARY

January 11, 2020
**Special Group Painting
 Party**
 Morning only

Still in planning stages, but
 be sure to bring your pastels
 and be ready to paint!



MARCH

March 14, 2020
Polish Your Drawing Skills
 Demo and Workshop

Susan Griffis will present key
 factors of drawing to help
 make your paintings better.



MAY

May 9, 2020
TBD
 Demo and Workshop

Still in planning stages with
 an award-winning artist.
 Watch for more details!

Your Own Webpage for only \$30

Did you know that as an APS member, you can have your own webpage on the APS Website?

For only \$30 (one-time charge...no yearly fee), you can have a page that will link from your name in the Membership List. If you already have your own website, we can put a link on this page that will direct people to your website.

Updates to this page can be made for \$15...but otherwise there is no additional charge.

For details...and to see pages already in place, go to the APS website (www.appalachianpastelsociety.org), and click on the "Member Directory and Gallery" tab at the top of any page.

Information about how to have your own page is above the membership list.

If you have questions, contact the APS Webmaster...

Kay Gordon, APS Webmaster, kgordon@main.nc.us, 828.206.0240

APS Officers and Board Members

OFFICERS:

President: Will Evans, pineconelodge@gmail.com

Vice President: Nancy Clausen, nancy.clausen@outlook.com

Secretary: Michelle Breen, michellemichelle831@gmail.com

Treasurer: Gary Rupp, garyruppart@gmail.com

Immediate Past President: Gary Rupp, garyruppart@gmail.com

BOARD OF DIRECTORS:

2020 APS National Show: Susan Griffis, griffis.susan@gmail.com

Membership: Susan Voorhees, susancvoorhees@gmail.com

Communications: Chris McGraw, cmcgraw999@gmail.com

Programs: Robbins Richardson robbinsrichardson@gmail.com
Kathleen Jones kwyoga@yahoo.com
Julie Babb juliebabb52@gmail.com

Publicity Coordinator: Jane Voyles, joyles121618@gmail.com

Non-juried Shows: Anne Allen, annekallen@gmail.com

Nominating: Judy Harron, abharron@live.com

Hospitality: Carol Crotty smilesinnottphoto@yahoo.com

Paint Outs: Gary Rupp, garyruppart@gmail.com
Nancy Clausen, nancy.clausen@outlook.com

Library: Anne Allen, annekallen@gmail.com

Newsletter: Susan Griffis, griffis.susan@gmail.com

Social Media: Chris Robinson, harpnhu@charter.net

Website: Kay Gordon, kgordon@main.nc.us

Appalachian Pastel Society Membership Application

DATE _____

Name _____

Address _____

City _____ State _____ Zip _____

Telephone _____ Alt Telephone _____

E-Mail _____ Website _____

Renewing Member _____ New Member _____ Artist _____ Art Supporter _____

Committee Interests (How you can help):

Exhibitions _____ Programs _____ Hospitality _____ Telephone _____ Newsletter _____ Website _____

Membership _____ Clerical _____ Workshops _____ Social Media _____ Other _____

Awards/Experience/Comments:

Skills: (Media/Teaching/Computer/Photography/Clerical/Organization/Leadership/other)

What are your expectations of APS? (How can we best serve our membership?)

How did you learn about APS? Newspaper _____ Magazine _____ APS Website _____ Facebook _____

Meetup _____ Friend _____ Other _____

Please include a check made payable to "APS" in the amount of \$25 for membership for one year. You can also submit a digital form and pay with PayPal or credit card on our website, www.appalachianpastelsociety.org

If you don't submit a digital form, please print and mail this form. Thank you!

[APS membership year starts January 1st.]

Send to: Susan Voorhees, Membership Chair, 55 Woodward Ave, Asheville, NC 28804

More information: contact Susan at: appalachianpastelsociety@gmail.com (828) 253-4628