



Web Show

October, 2020

APS Adventures in Pastel Adventure Six: "The Color Purple"

"Laying down a good-sized area of purple is all I need to start a picture. That color is expressive in so many ways, and so special in others." -Wolf Kahn

Here's the challenge: Use the color purple in a critical way to create a painting!

Step 1: Decide what role the color purple will play in the articulation of your painting. It can feature prominently or reticently but it's role must be functional. Purple can be used to establish depth, energy, psychology, mood, atmosphere, harmony, contrast, symbolism...

Step 2: Paint! Have fun! The size of your piece is up to you.

Step 3: Write a brief description of how you used the color purple to develop/inspire your piece.

Step 4: Give it a title and take a photo!

Step 5: Send **the photo of your artwork, along with the title, size, and description** to Kay Gordon (jkaygordon364@gmail.com) by 6 PM Sunday, October 25.

Step 6: Remember this deadline is firm. On your mark; get set; PAINT!

The following 31 artists, who are members of the Appalachian Pastel Society, participated in this virtual group activity while "Sheltering-in-Place" at their homes. The artwork they created is shared here. Hugs and best wishes to all until we can meet together safely.

Kathy Amspacher, Hendersonville



Mr. Mouse 7.5 x 10

These paintings were experimental monoprints inspired by Karen Margulis's study of monoprints. I have worked acrylic monoprints but found pastel monoprints to be lots more fun!

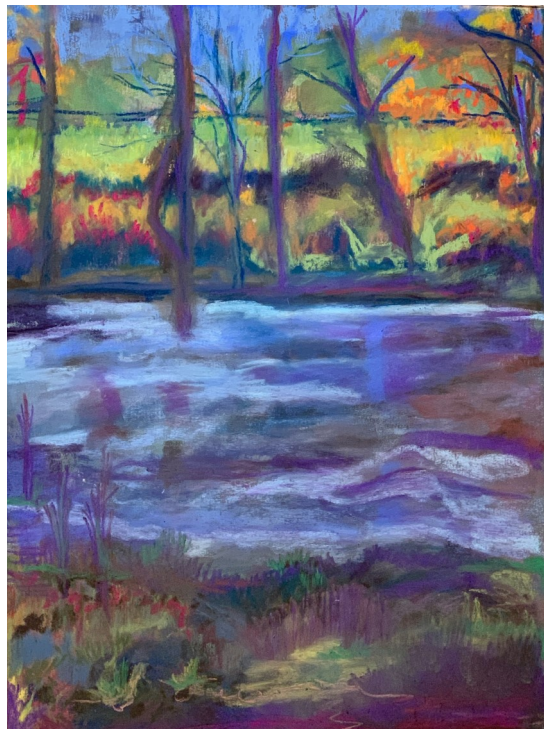
Used liquid acrylic black paint to paint the image of our cat Mickey Mouse onto a piece of glass. Then put a piece of paper I used from an old calendar (good quality heavier weight calendar) on top of the painted image and used a brayer to Monoprint the image on the paper. The print will be in reverse of original source. After this was dry, I used assorted pastels, mostly from a few Diane Townsends I have. They have more gypsum and worked well with the paper. The paper took the pastel very well. I included a ghost print, a very light second print with barely an outline of original.

Purple is a fave of mine and suited how I feel about this sweet cat we had for 21 years.

Catherin Banta, Hendersonville

Sunday Purple Trees 12 x 9

The purple inspired me and created a whole different image from the original photograph. The end result was moodier and a bit somber, yet had more depth than the original. The yellows and greens helped create some excitement and gave the painting some added life and light. Landscapes are a challenge for me and I enjoyed using purple in lieu of greens and browns to help me think outside of the box. I believe the end result was more appealing as well. Thank you for these challenges!



Uart 400 pastel paper

Jane Best, Morganton

When I'm Old I Shall Wear Purple 9 x 12



9x12 pastel in Art Spectrum (beige) paper.

I mostly do landscapes and use purples mainly to subdue and shadow greens and yellows. Wanting to do something different for a change, I looked up purple pictures on the internet and considered buying an eggplant to paint or else painting one of Queen Elizabeth's many purple hat photos. I finally decided to paint this pastel based on a photo I took of a homeless lady many years ago in New Orleans.

The title is from a poem I like. Thanks for another interesting challenge.!

Tomasyn Breazeale, Buford, GA

This was painted using soft pastels on an 11X14 UART Pastel Board. I also used hard pastels and an alcohol wash for the underpainting.

The painting is based off of a reference photo I took over last weekend while on a trip to Sky Valley. The tree was the only one standing in a field next to the 12 Spies Winery and stood out against the sky and mountains in the background. I love to use Purple tones in my paintings, partly to offset all the green we have in Georgia and also because I prefer to use it to bring depth to my darker areas over greens and blues. I find the Purple tones to be soothing. For this painting I used some neutral violets to get the distance of the mountains in the background and a combination of some Darker Purples to give depth in the foreground.

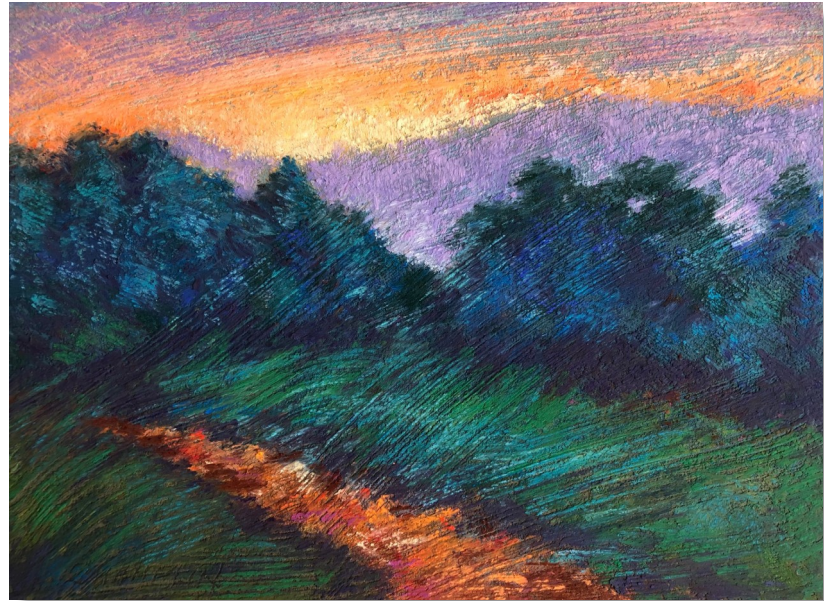


The Last of the Old Guard 11 x 14

Michelle Breen, Asheville

The Path 6 x 8

This painting was inspired by a sunset view from an airplane window, while sitting on the runway. I chose purple for aerial perspective in the mountains, depth and shadows in/under trees and grasses, and in the sky for mood. The substrate is media board coated with micaceous iron oxide. The rough texture of the substrate, causes the camera to pick up the very top layer of pastel, which gives the image a little jolt! Sure wish I could figure out how to play that down.



Cathynn Burgess, Hendersonville

Good Heavens 8 x 10



" Good Heavens" 8x10 uart 400 soft pastels and pan pastels

I received an award of pan pastels in 2018, the darks, and had not yet explored them so this was a great opportunity to have some fun! There were plenty of gray and violets in the set.

About using the purples for this subject and why this subject:

Moonlight. I was up at 1:30 A.M. contemplating the heavens, during a phase of the full moon and took many photos. This painting evolved from memory and some pretty lousy camera shots!

I am reading about a movement happening on the heels of Impressionism in America called Tonalism. I am immersed in learning the techniques employed by George Inness and Charles Warren Eaton in creating moody, low chroma, ethereal landscapes and skiescapes. Dawn and dusk are the golden hours, night time too. I have always been drawn to those times of day. Nocturnes, not very often. These quiet times of transition, the fleeting moments of drama infuse me with a reverence for my existence. I am kin with others seeking to communicate a quiet, contemplative mood directing my attention to a heaven beyond the canvas. Great use for low chroma purples!

Deborah Chase, Hendersonville

Untitled 10 x 6.5

Keeping with the concept of the color purple here is my submission. It is 6 1/2" x 10" on Art Spectrum Colourfix paper. Untitled. I used the color to unify the painting by having it in the objects, reflections and shadows.

Thank you for putting these Adventure shows together. Actually, a thank you also should go out to everyone who is participating. I look forward each month to sharing with my sister (who lives in rural Montana) the topic and then the results of the Adventure.



Nancy Clausen, Swannanoa

Purple Mountain Majesty 12 x 16



The idea came to me as I was thinking about doing a different painting. It's from the piece "America the Beautiful". Mountains usually look majestic so I thought purple was the perfect color to depict them.

This is finished for the time being. I call it Purple Mountain Majesty. It's on rose grey Art Spectrum and is 12x16. I used Rembrandt and Faber

Castell pastels for the under painting. Then I used Great American and Unison for the rest of the painting.

Marcia Donley, Zionville

Midnight Prowlers 24 x 18

I have always loved animals, and have a special feeling for cats. Maybe because we are nocturnal creatures.

Hope you are doing well. I appreciate all the effort you put into these webshow events, and know how much time it takes. Thank you for including my pastel....

Best Wishes



Terrilynn Dubreuil, Asheville

I rarely use purple as a major color element in my paintings so this one was a bit of an adventure .. a unique challenge. Out on a walk along the ocean in Maine, pre-dawn, one is struck by the deep purple and blue hues and tones of the landscape elements as the sun is coming up, masked by the trees, and yet is not high enough to have any impact on the trees themselves and the grass. Here I used deep purple to give that sense of the early morning haze and shadow.

"Purple Haze" 4x11 pastel on sanded paper



Purple Haze 4 x 11

Will Evans, Fairview

This is a 9x11 on burgundy Colourfix sanded paper. I chose the split complementary scheme of purple, giving me the range of yellow-orange to yellow-green.

Sometimes the Blue Ridge mountains turn wonderful shades of purple due to the atmospheric conditions filtering the setting sun. Add in the frequent rain squalls and you get, of course, "Purple Rain"

Purple Rain 9 x 12



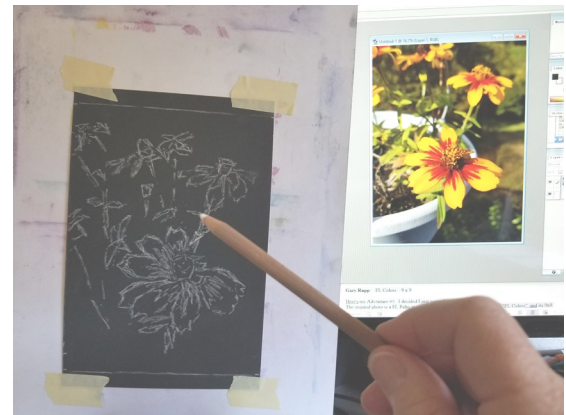
J Kay Gordon, Weaverville

Miracle-Gro 8 x 6 on black Uart 800



I am including a photo of my process...I made a sketch with white charcoal on black Uart. My reference photo was on my computer screen.

I used a purple background to set off the color of the flowers... picking a Triadic color scheme of purple-green-orange.



The plant that is "modeling" for me is an unbelievable survivor. It is in a hanging pot on my deck...purchased last year (Spring of 2019!)...no water & direct hot sun while we were away all summer of 2019...no evidence of life when we returned, but I was just too busy to toss it...hung out in the cold and snow all winter... appeared to just be a pot of dirt. Again, spent the summer (2020) looking like a pot of dirt...until about July when a tiny sprout appeared and grew and grew and bloomed and bloomed!



So I used a photo that was pretty neutral and had a nice quiet feel and I liked the composition. I did a value drawing with a few purple shades. I did an alcohol wash and then reestablished the drawing a bit with the purple colors then accented with some subtle natural landscape colors. I wanted that purple base painting to be more predominate. I liked the challenge because it once again helped to explore different creative avenues. I did this on an 8x10 piece of regular sandpaper. I learned about this from another pastel group and thought it was a great material to use to feel less inhibited. Calling this "Moody Landscape".

Sami Griffis, Flat Rock

While in the hospital for pneumonia, My Dad sat with me every evening until I went to sleep. He would read, recite poems or we would color together. And one night, he recited:

"I never saw a purple cow,
And I never hope to see one
And I can tell you anyhow,
I'd rather see than be one!"



#8 The Purple Cow—In the Pangola 9 x 12
9 x 12 on Colorfix Paper, Elephant color

I told him there was no such thing as a purple cow! He retorted back, well, you just never know, do you?

Fast forward 8 years, and our farm pasture was filled with Hereford cows. Who looked PURPLE in Florida's brilliant early evening light! Who knew is right! I can now say I've seen a purple cow. This is a portrait of #8, one of our best cows. She always had the most beautiful calves. I checked to see if that really was a poem, and it was! Written by Gelette Burgess in 1895. My Dad was full of surprises. And I have loved the color purple ever since.

Alec Hall, Hendersonville

Welcome Shade 9 x 12

My painting for Adventure 6 is "Welcome Shade"; 9" x 12" on UART 400 grit.

I used the purple on the horse, on the shaded tree trunks, and for the shadow on the ground. Because there are many cool areas in this piece, I used a slightly warmer purple on the horse to contrast some warmth with the background cools. In general, I like to use various shades of purple whenever I have strong greens in a painting.



Kathy Hawk, Kingsport, TN

Blue Bells 8 x 10

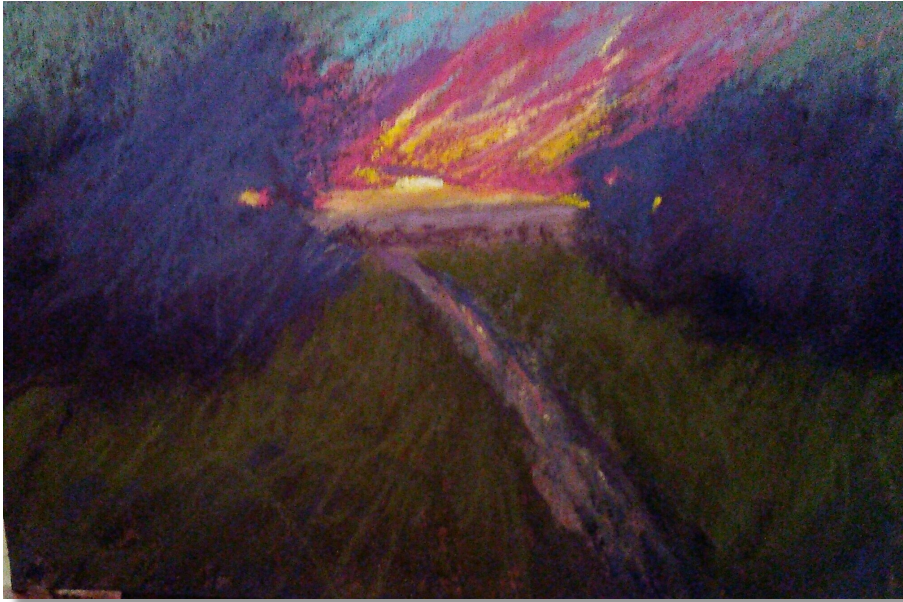


Pastel I started one day with our Plein Air group as a watercolor monotype and have turned it into a pastel painting.

The use of purple helped push the forest back and create depth while the rows of flowers with their various purples and blue-violets lead the eye back into the scene.

I used the sky color to help unify the piece.

Gail Helton, Knoxville, TN



Purple Magic 5.5 x 8.5

Use of purples to signify darkness, mid tones to represent just before total darkness.

5 1/5 x 8 1/2 homemade surface with watercolor underpainting in purple, pink, and yellow.

Ginny Hotze, Asheville

Intense

I use purple for shadow and highlights frequently.

"Intense" is the name of the painting but fun was the feeling



Karen Knaub, Lake Lure

Rooftop Solo 12 x 9



Purple is my favorite color to work with. I love the warmth, the energy and I feel you can set just about any mood you want.

On this painting i was trying to create the feeling of a fun solitude. This is a tribute to all the out of work musicians in all the big City's that aren't working because of the pandemic.

I still have lots to do on this painting, its been a busy few days.

Cindy Lidd, Asheville

Autumn Table 9 x 12

Attached is my 9 x 12 painting entitled "Autumn Table"; sorry it is so late in coming but with the little time I have now, I had to make the time to do it.

I like the way it turned out. I chose the underpainting color a deep purple and tried to keep the purple alive throughout the painting.



Linda Medders-Jackson, Cross, SC

Now I know why I never paint sheep the fur is horrendous but I did try

dark purple for bringing out the sheep and some shadows on sheep.

used medium purple for facial shadows and fur

light purple for high lights in shadow areas



Sheepies 7 x 10

Meryl Meyer, Weaverville

I decided to use purple, my favorite color, for highlights on 2 pumpkins. I also tied it in with the background.

Pumpkin Pals 6 x 8

6 x 8 on Rust colored pastel premier Paper Used Terry Ludwig, Blue Earth, Sennelier soft Pastels



Two Pears and a Plum 6 x 8

on Uart 400 Terry Ludwig, Sennelier, Blue Earth, Great American and Nu Pastels Still life study. I made the Plum the star. Pulled the color purple into the background and shadows.

Been wanting to join your adventures but I have been busy with medical stuff, Patreon, and creating illustrations for my children's book. Somehow I have managed to paint myself through it.

Miss you all

Don Osterberg, Hendersonville



Underpainting



First sketch



Happy Halloween 11 x 14

I decided to go with the season. "Happy Halloween" 11 x 14 Soft pastel on UArt 500 paper. I was not sure where this was going when I did the underpainting and the 1st sketch. But it did evolve in to a fun time..

Joy Rademacher, Southport

Entredeux 21 x 11



Underpainting



Here is my purple adventure. I used purples for the underpainting which I attached also. Somehow, orange became a player. I needed something warm and the wood door showed orange. This is "Entredeux" 21 x 11, inspired by a photograph I took ten years ago of the christening gown I made for my granddaughter Lorelei.



Charlie's Music 16 x 12

Pastel on pastel ground gator board

Inspired by: Purple in the background, highlights and shadows of the clothing and face.

I am hoping for the day when we can be together in a crowded space listening to talented musicians play live music. I miss the enjoyment of the atmosphere and how I can be taken away by a saxophonist!

Awe - someday soon I hope.

Zinnias on the Bend 8 x 10



Reference photo



Purple was the underpainting for the darks and the rocks. I love purple but haven't been at the easel much and labored over this. Lost the story of light when I tried to simplify and leave out the distant trees. Put the trees in lightly at the end because my sky done and thick!

Chris Robinson, Leicester



Purple Mountains Majesty 11 x 14
Pastelmat



Pallet

With my mom in the hospital I've had very little time, or inclination, to paint, but I just received a new set of Art Spectrum extra soft pastels and violet shades.

I couldn't wait to use them for this adventure. I added some blues, coral, and then yellow for the complementary color.

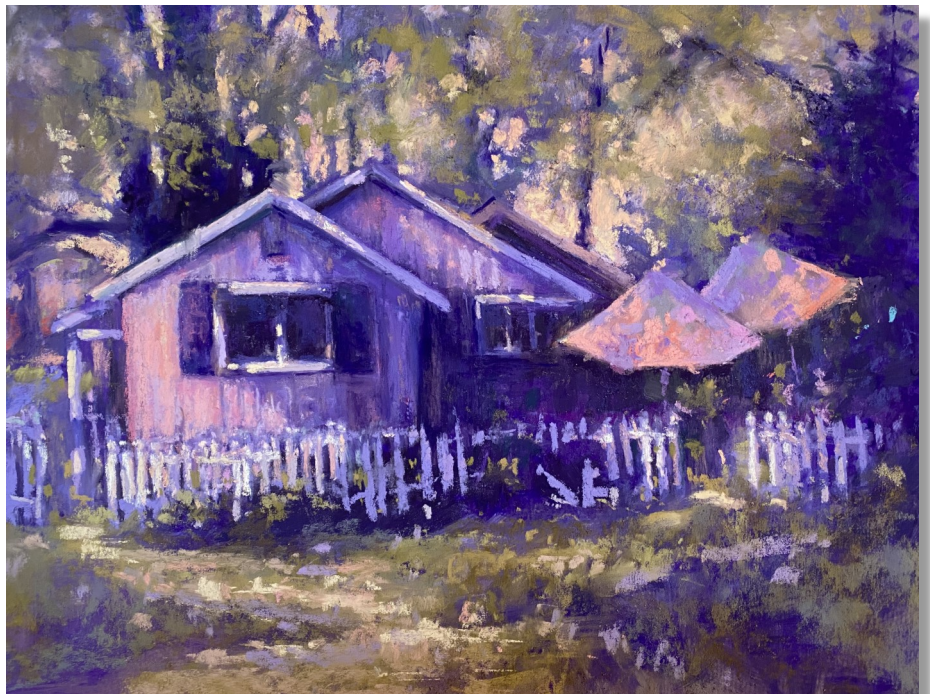
Gary Rupp, Black Mountain

For the underpainting, I used three shades of violet gauche: spectrum violet, bright violet and smalt blue. I also used the underpainting to establish the major areas of darks and lights. For the painting, I focused on using warm and cool violets with touches of peach, orange and olive greens and wanted to keep things painterly and loose. The fence, especially, was fun to do.

Sunrise Café 11 x 14



Underpainting





thumbnail sketch



In the Glow of the Moon 6 x 9

Title: In the Glow of the Moon

Paper: Uart

Pastels: Various Brands

Personal Reference Maine Coastal Scene



palette

First, let me thank you for all that you do for APS. It is greatly appreciated.

I've enclosed photos of my process which consisted of doing a thumbnail sketch; picking my purple pastels, and then developing my painting.

It was a challenge to take a daytime photo and develop a twilight scene. The challenge was (hopefully) successfully getting the values correct for a twilight scene that essentially was in my mind's-eye.

Ruth Whitaker, Newnan, GA

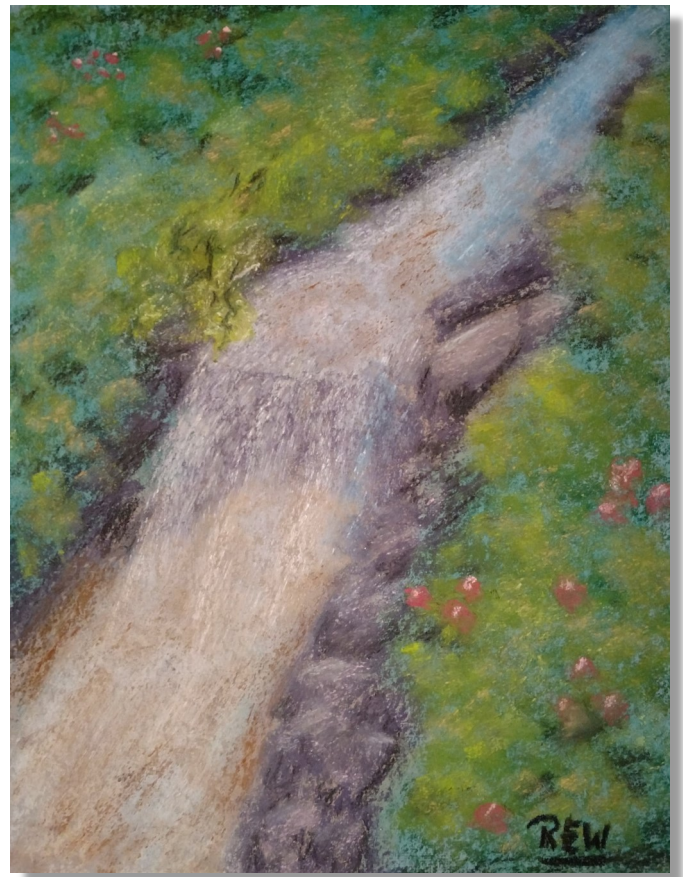
Cascading Falls 12 x 9

9x12 on Art Spectrum paper. Assorted pastels.

Cascade falls at Jefferson Park off the Blue Ridge Parkway.

Done from a photo as I was unable to make it outside today.

I enjoy using different shades of purple for shadows, rocks and even under the falls.



Sawyer Bear Whitemiller, Cape Coral, FL

Magenta Guardian of Treasure 7 x 10



I used different values of purple to represent the shiny scales of the dragon. The dragon is holding gold coins and gemstones in its claw.

I have always loved dragons and have been meaning to paint one. This dragon painting works perfect because I am learning about drawing animals with my art teacher, Anne Allen.

This gave me a new insight on how complicated and detailed a dragon has to be. Purple is my favorite color and the amethyst is my birthstone!

Much appreciation to all who participated and shared their paintings and their comments!