



WIN this Townsend Thin Line Pastel set! (earn one point for each "Adventure")

More details... <http://www.appalachianpastelsociety.org/>

APS Adventures in Pastel Adventure AA-3: "The Inside Scoop"

Welcome to our Third Pastel Adventure in Series AA called "The Inside Scoop". In this adventure we will find our inspiration from building interiors. Many artists have used interiors of rooms as references for their paintings.

For examples, see Vincent Van Gogh, Grant Wood, and Wassily Kandinsky. An interesting recreation of some of this artwork can be seen at <https://www.artsy.net/article/artsy-editorial-rooms-6-famous-paintings-today>

Here's how this adventure will work:

Step 1: Look around your home, office. or any personal interior space for your own inspiration.

Step 2: Take a photo of the space. You can use this photo as a reference to work from, or you can work from life.

Step 3: Create a painting to depict all or a portion of that space. Note: we are not just looking for a still life, but want to see an area of an interior. You can experiment with lighting, angles, colors and painting styles.

Step 4: Send **your interior photo, and the photo of your artwork, including title and size** to Kay Gordon (jkaygordon364@gmail.com) by March 24th at 6 PM. Feel free to include a brief commentary about your process or tell us something about the interior space you chose to paint.

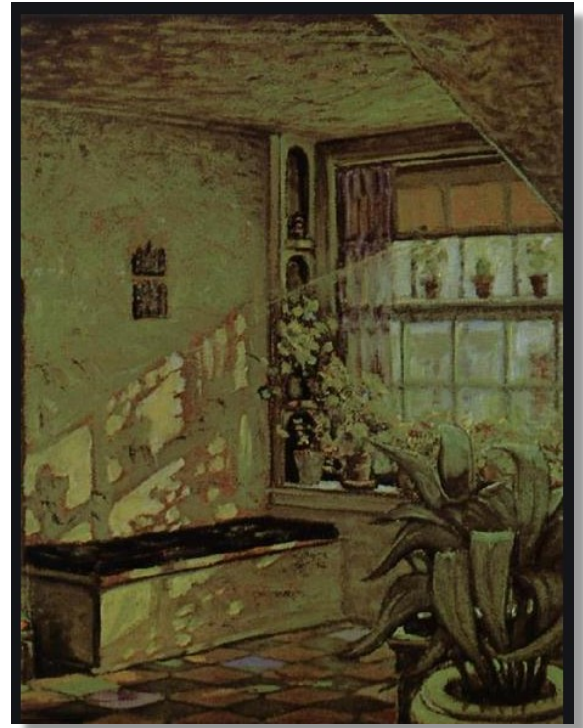
Step 5: Remember this deadline is firm and nothing can be posted that is received after 6 PM on March 24th. Your painting does not need to be finished. The adventure is designed so we can be painting, exploring, experimenting and enjoying pastels together!

On your mark; get set; go inside; PAINT!

Some famous interiors



The Bedroom 1888 Vincent van Gogh



The Sunshine on the Corner, 1928—Grant Wood



My Dining Room 1909 Wassily Kandinsky