



The following 29 artists, who are members of the Appalachian Pastel Society, participated in this virtual group activity while “Sheltering-in-Place” at their homes. The artwork they created is shared here. Hugs and best wishes to all until we can meet together safely.

APS Adventures in Pastel B-1: “Me and My (Cast) Shadow ”

Welcome to our NEW Adventure Series B. This is the first Adventure in that series, and it is called “Me and My (Cast) Shadow.” In this adventure, the challenge will be to use shadows cast by one or more objects as the focus of the design of your painting.

There are two basic uses of shadows in a painting, Form Shadows and Cast Shadows. Form shadows (shading on the object) are used to give the illusion of dimension to the object (so that an apple will appear to be round). Cast shadows “are the shadowed area on adjacent surfaces where direct light is blocked by the form.” (quote from Artist Network)

In this Adventure, we will emphasize Cast Shadows. If you “Google,” “shadows in artwork,” you will find excellent discussions and demo videos of the principles involved. You will learn that important factors include the angle, colors and intensity of the light source (or multiple light sources). You will find that you need to take into account the surface your shadow is projected on, and the quality of the edges of your shadow.

Step 1: Take some time to study the principles of shadow portrayal. Also, look at other paintings and see what other artists have done. (See the illustrations below for inspiration.)

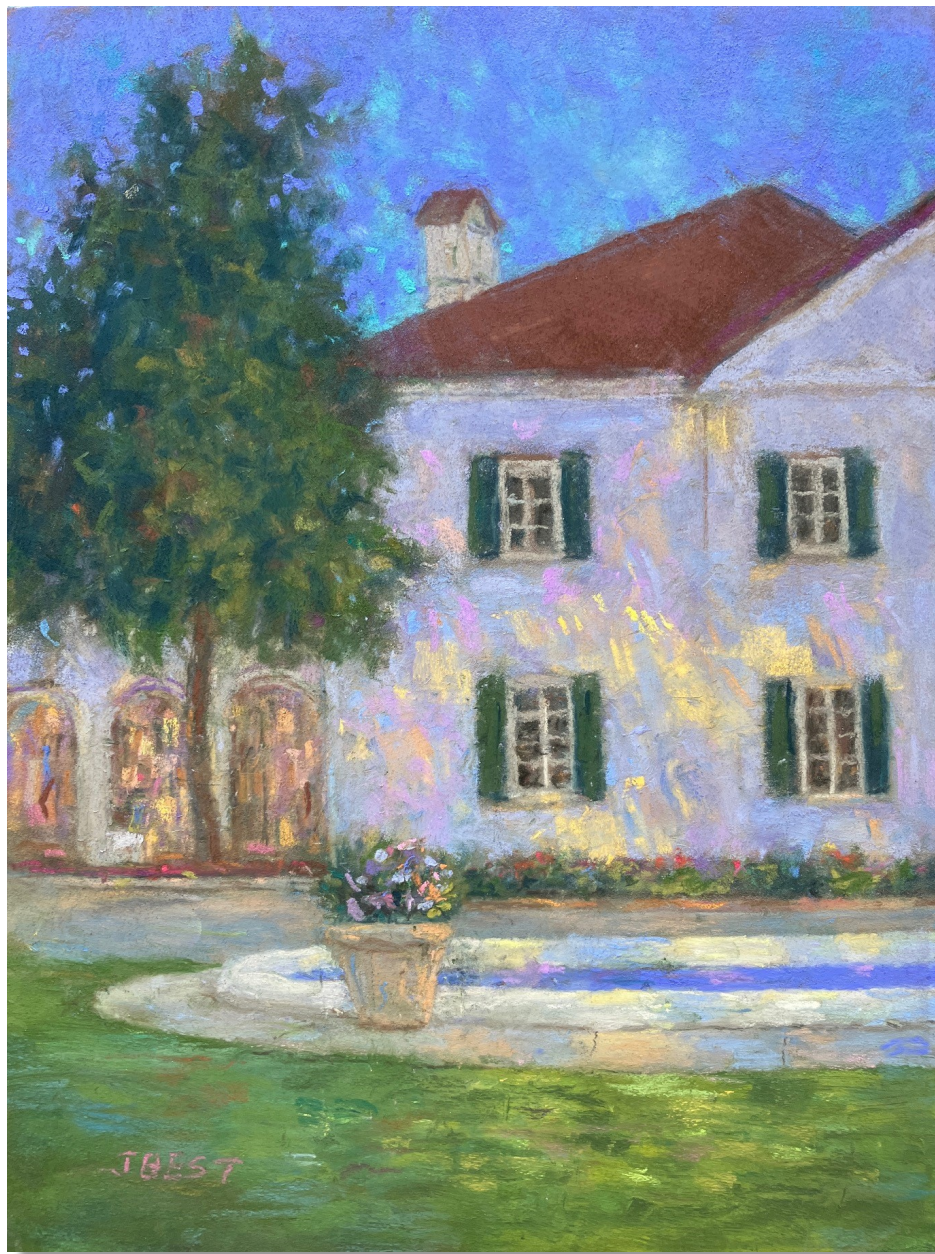
Step 2: Instead of focusing on an object in your painting, feature the shadow it casts. Any style is acceptable, be it realistic or something created from your wild imaginings. The colors, size and type of surface are totally up to you, the artist.

Step 3: Send **the photo of your artwork, your comments, and the title and size** of your painting to Kay Gordon (jkaygordon364@gmail.com) by **July 27th** at 6 PM.

Step 4: Remember, this deadline is firm and nothing can be posted that is received after 6 PM on **July 27th**. Your painting does not need to be in its finished form! The adventure is so we can be painting together. This means exploring and experimenting with ideas and techniques using pastels and then sharing the results with each other.

GET READY, GET SET...CHASE YOUR SHADOW

Jane Best, Morganton



Early Evening at the Cottage

*12 x 9 on Sennelier
Pastelcard*

This painting is based on a photo I took several years ago of the Crane Cottage on Jekyll Island in Georgia.

Most of the scene is in shadow with faint dappled light and with only a few hints of the stronger sunset light.

I enjoyed this challenge and will definitely try to find some more shadow scenes to paint.

Daphne Boder, Charleston, SC

This was a cast shadow on the wall of my bedroom.

I really enjoyed painting the negative spaces around the shadow.

This is 6 x 9 on Uart 500



Shadow on the Wall

9 x 6

Beryl Bradley, Brevard

Silvermont is an historical home in Brevard with trails and a walking path which I walk through it most mornings. As I walked through on Saturday it occurred to me that there were shadows everywhere on this bright sunny morning and I needed to take some photos to use in this challenge!

This one was very difficult for me. I'm thinking I need a class in painting shadows!

I used a board I painted a few years ago and had alcoholed over it as I hated it. So, I brought the 11x14 board out and used hard and soft pastels. I used my photo for ideas but it's not a true likeness of the photo.

This was a challenge for sure!!



As always, thanks for all you do and for these great challenges. I look forward to them every month.

Silvermont Gardens

14 x 11

Regina Burchett, Kannapolis, NC

Attached is my pastel painting for this cast shadows challenge.
It is titled "On the Way to Clearwater", and is pastel, 9x12
Thanks so much for doing this!



On the Way to Clearwater

12 x 9

Chris Carroll, New Bern, NC

The title is "Sunny Day on the Course". the size is 12 x 16 on non-sanded paper. I saw this scene on the golf course and decided to try and capture it for the shadow painting project. Not sure this is what you were going for, but I loved the scene and wanted to paint the bright summer day with the tree shadows. The sun was too high at the time to get really strong shadows, so they are there but somewhat light in intensity. I enjoyed this project and will keep trying to do more and different kinds of shadows this summer.



Sunny Day on the Course

16 x 12

Karen Chambers, Candler, NC

The flowers are 'Morning Glory Bliss', 14" x 20" Art Spectrum Colorfix Elephant Gray board with different pastels. Done on top of a previous pastel.



The second is 'Upper Whitewater Falls', 14" x 20" Elephant gray Art Spectrum Colorfix board, painted on top of a previous pastel.



Deborah Chase, Rutherfordton, NC

Reflecting Shadows

9 x 11



Hope you are staying cool but enjoying the summer. Here's my entry.

Title: "Reflecting Shadows"

Size: 11"x9"

I enjoy seeing the shadow this snail figurine casts next to some blooming violets. I used Art Spectrum Colourfix sanded paper and a variety of pastels.

Nancy Clausen, Swannanoa, NC

Here is my shadow painting.

The painting is of the shadow of a wild cherry tree that finally grew tall enough that when the afternoon sun came around our home, it cast a shadow on our deck.

It's done on Ampersand Bord 12 x 12. I used Faber Castell hard pastels for the underpainting and then Rembrandts for the deck. The tree shadow was done with Terry Ludwig violets

Afternoon Shadows 12 x 12



Claire Crook, Hendersonville, NC

Early Start to the Day 12 x 9



When I read this challenge, I immediately thought of a picture my husband took years ago when we were in Kansas City. Taken from our hotel window, I thought it was the perfect shadow subject. However, translating into a pastel painting has been a challenge. I think I have a decent start on it, but we'll see where it goes. Getting both of the subjects of the shadows in will make the painting more believable. It's coming.

9 X 12 pastel matt

Various pastels and pastel pencils

Diane de Grasse, Black Mountain

Sunny Sink

11 x 14



All soft pastels on ivory Canson Mi-Teintes.

Jennifer Donolo, Burlington, ON, Canada

Thank you for this exciting Adventure! It was challenging! Please find my submission attached.

Pastel on Art Spectrum Colourfix Pastel Paper (Terracotta)

I used NuPastels and Rembrandt hard pastels, and Unison, Terry Ludwig, Art Spectrum and other soft pastels.

Caught in summer rain and sun showers in Charleston.

Charleston Showers and Sunshine

2022

9 x 12



Terrilynn Dubreuil, Asheville

Milo Catches Rays

12 x 18



Milo, a sweet tabby, loves to be nearby - especially when one is cooking. I have to keep an eye on him because it's easy to step backward and trip on him. This particular day, the sun was getting low as it passed through the window, across the table and through the rungs of the chair, which then cast strong, abstract shadows on him and the floor.

Will Evans, Fairview

Attached is my shadow submittal. 11x14 on Black Uart 400, almost all the marks are with nupastel or pastel pencils. Title: "Winter jumble"

The photo was taken on a bitterly cold afternoon, sun was behind me as I photographed a frozen pond. I wasn't aware that my shadow photobombed me. The intense light illuminated the bare branches and deepened the shadows. I cropped the photo and focused on the edges.



Winter Jumble

14 x 11

J Kay Gordon, Weaverville

That strange projection out the top of my head is an action camera that I have attached to the top of my helmet. It is my newest “toy,” and I’m enjoying editing to create movies to watch when we “bike” indoors this winter!

For me, this was truly an exercise in “paint what you see.” The unusual angle looking down at the bike, and the contortions of the shadows required concentration...wheels weren’t round, bars weren’t straight, lengths were exaggerated!

We’re still in Maine, so I painted in my travel “studio” ...aka our dining table in our trailer... with my reference photo next to me on my iPad.

I sketched with white charcoal on black Uart 800, using pastel pencils on the bicycle and the shadows...and Creatacolor pastels for the pavement in the background.

Shadow-self-portrait with Bike 4 x 5



Jeri Greenberg, Leland, NC

Tea Party

14 x 18



I found some little teacups in a thrift shop and brought them to my studio for my still life class.

From there the story of the tea party began. I always like to make sure my paintings tell a story. this one was mine

MaryAnn Grib, Gray, TN



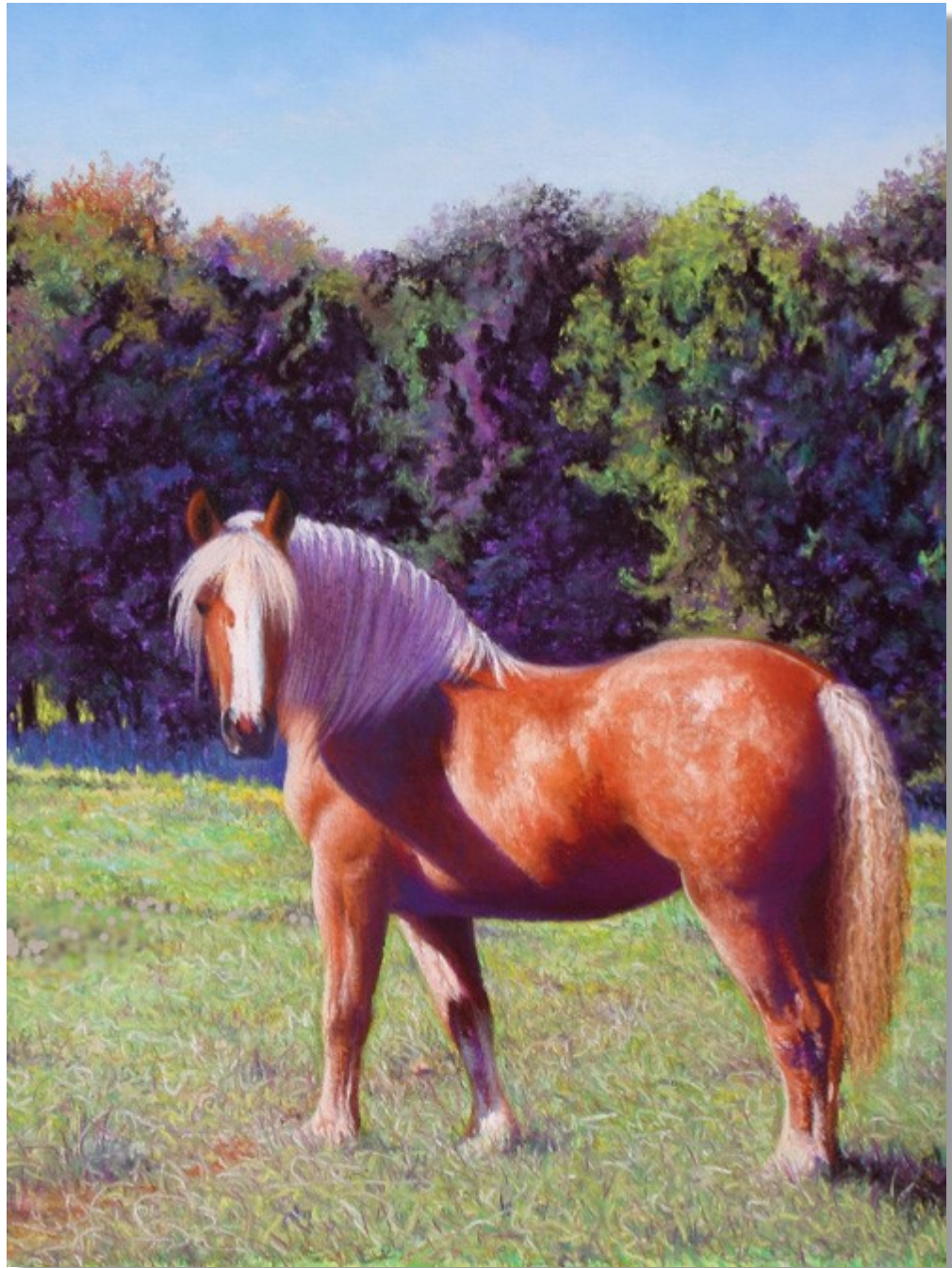
(untitled) 8 x 10

I'm submitting this incomplete piece. I had a crazy week and didn't have much time to work on it. I chose the mug tree on my kitchen wall because of the multitude of shadows created. It was more challenging than expected but fun.

I have quite a bit more to work on - hoping to make the shadows a bit more interesting.

It's on 8x10 multi media paper with a base of clear gesso. I'll leave it as untitled.

The Belgian
12.5 x 9



Surface: UART 400 grit
Pastels: Rembrandt,
Great American, Carb-
Othello pastel pencils

As a realist painter, I frequently use shadows (both form shadows and cast shadows) in my work to give the illusion of 3-dimensionality. Cast shadows on the ground also serve to anchor an animal or an object in their environment. Thus, for a realist, shadows play a major role in the value structure of every painting.

This horse was one of several draft horses owned by a good friend in Michigan. In this painting, I was drawn to the cast shadow of the horse's head on his shoulder as he turned to face me. I experimented with color, especially in the background trees, and used them as a foil for the warm, solid-colored horse.

Thanks for continuing the Challenges for another 6 months.

Mona Hearne, Matthews, NC

Paintings are from Fall photos I took of Windsor Greenway in Matthews

5" x 6"
Pastel Card
Nupastels and Ludwig's
Title "Green Bridge at Windsor"



6 1/2" x 7 1/2"
Pastel Card
Nupastels and Ludwig's
Title "Windsor Creek"

Kathy Hutchinson, Rutherfordton, NC

These are just studies and are not titled .

Well before this challenge I was fascinated with cast shadows along the road in our neighborhood at the coast.

I am wanting to be able to paint a composite of a variety of photos. So one submitted picture is looking directly down at shadows on asphalt the other is looking at the entire tree shadow as well as nearby trees.

This is a busy time and I don't want to miss submitting so here it is..such as it is.

Both are quite small ..around 3"x5"



Lynn Jackson, Brevard, NC

Good Morning Geranium

12 x 9



I love red geraniums.

I have a red door and this is a hanging pot next to the door which is a pretty accent to the house.

It was early morning when I left the house and saw this shadow in the bright sun.

Karen Knaub, Lake Lure

I am currently away in Hawaii, and knowing this challenge was coming I packed just a sketch book and some pastel pencils so I could participate.

I haven't missed a challenge yet. So my biggest challenge for this one was lack of supplies. I will try this again because I think it could make an interesting painting.

Thanks again for another fun challenge.

I don't know how you keep coming up with different ideas.



KBay

6 x 4

Cindy Lidd, Garner, NC

Attached is my drawing "Still Life With Apples"; size is 12"x12-3/4" on Uart 400. I always enjoy doing drawings of objects with some fairly deep cast shadows, which is always a challenge to get them right in a still life. Enjoyed the challenge.



Still Life with Apples

12 x 12 3/4

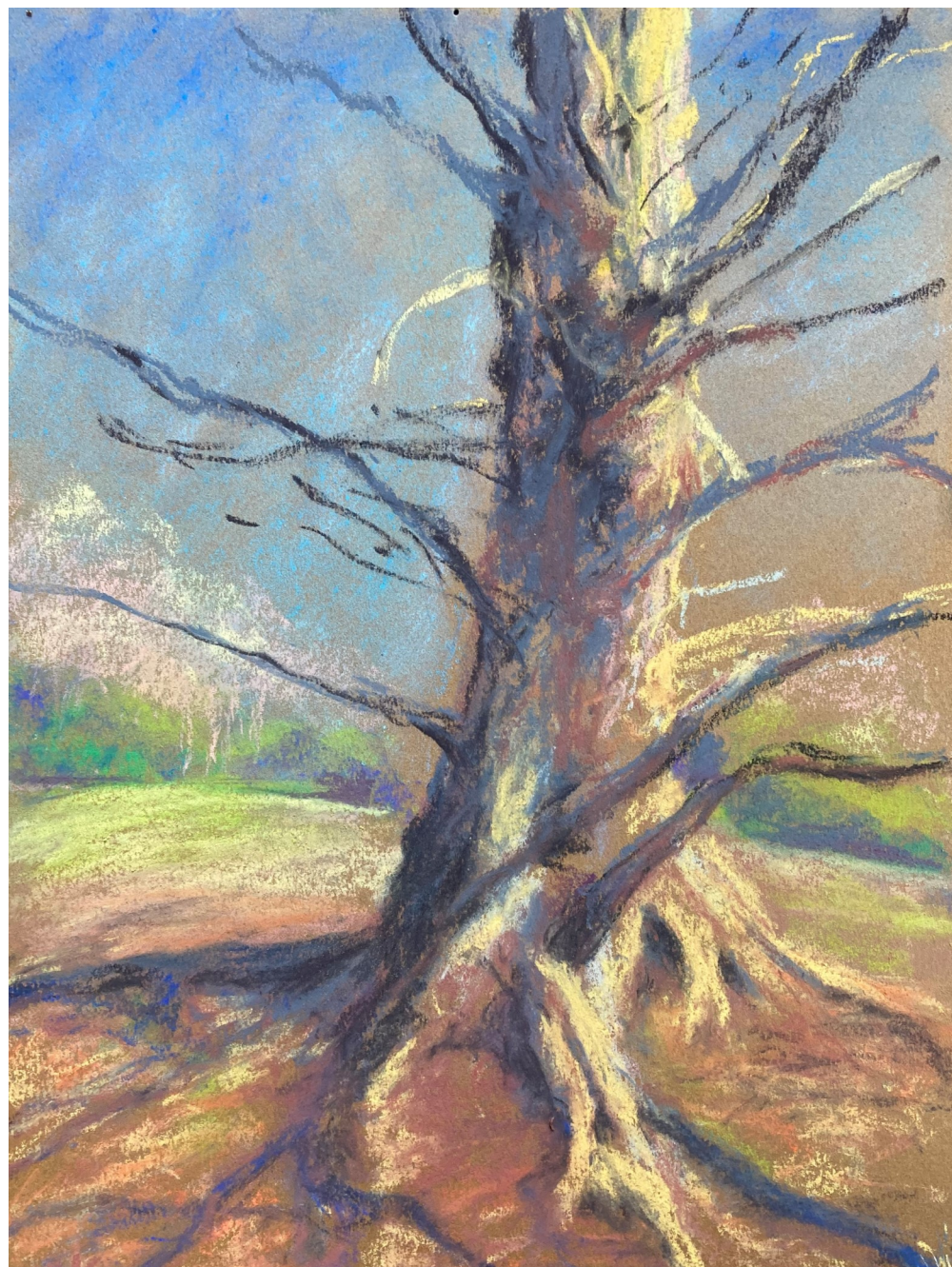
Margaret V Lyn-Soroken, Black Mountain

Title: Redwood heritage tree

Size: 12 x 9.5

Medium: pastels on Cason

Toned paper



I got this far on tree sketch from photo I took in winter.

I'm leaving as is hoping I've captured something.....

Thanks for the challenge.

Margaret V Lyn-Soroken

Meryl Meyer, Weaverville



Me and Fall Shadows
12 x 9

Assorted Soft pastels on light orange Canson Paper

Based on a reference photo I took in the fall of 2019 on the upper rd past my house.

The paper required my softest pastels. It does not take hard pastels well. I loved how the shadow from the trees created vein-like shapes on the dirt road. The shadows had some gradation of blue gray. They were quite intricate and created interest.

I was surprised that my shadow was in the photo and I kind of liked the mystery. My husband said it looked creepy. I like that it evokes emotion. The road leads up to the morning light.

This piece/study is not finished. This was another great challenge.

Thank You

Kathryn Olive, Durham, NC



Cicada in the Sun

Andrea Stutesman, Black Mountain

Title: Out of the Dark

Pastels: Variety of soft and hard

Paper: Dark UArt

Dimensions: 18" x 24"



Out of the Dark
24 x 18

Mary Tallman, Jackson, MI

Plein Air Poetry—Justin Parks Farm I 11 x 14



This farm composition I completed as a plein air painting.

I am always drawn to subject matter in the light that reveals strong contrasts. I love cast shadows that are long, as found either early in the morning or late in the afternoon.

The cast shadow of the silos on the barn roof were all it took to hook me to paint at this location.

Ruth Whitaker, Newnan, GA



Here are the pictures of my submission.

The original reference photo.

My beginning using DeWitt ink sticks and then rubbing alcohol over them. Lastly my finished painting.



"Early Morning Shadows." 8x10 on Uart 400 lb. paper. I used assorted soft pastels. This was an interesting challenge. We all do shadows but concentrating on them was a bit more challenging. Enjoyed it!



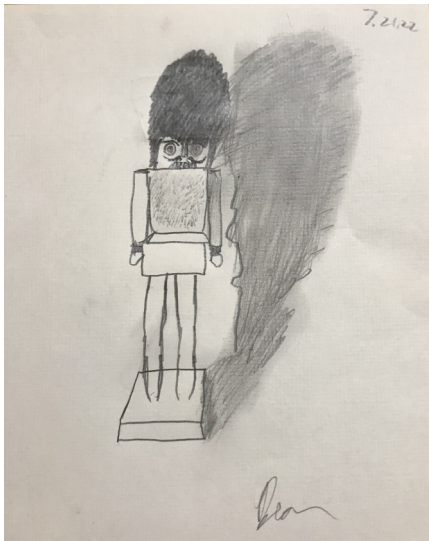
Early Morning Shadows 8 x 10

Sawyer Bear Whitemiller, Cape Coral, FL

I decided to paint this nutcracker that is in the house year-round and had a lot of fun doing this painting.

I listened to Tchaikovsky's The Nutcracker Suite while I painted and it was very inspirational. I did a sketch first on the pastel paper and then painted over it for the first time. I liked having an outline to paint over.

I can't wait for the next Adventure.



Christmas in July 8 x 6.5 , Pastel on UArt 400-grit sanded pastel paper

Much appreciation to all who participated and shared their paintings and their comments!