

The following 23 artists, who are members of the Appalachian Pastel Society, participated in this virtual group activity. The artwork they created is shared here. Hugs and best wishes to all.

APS Adventures in Pastel B-5: “Doing the Splits”

Welcome to our fifth Adventure in Series “B”. This challenge is focused on working with a split complementary color scheme. One of the many ways artists can create harmony in their paintings is by using a split complementary color palette. In this Adventure we want to explore this particular technique using any subject or style of painting you enjoy.

For this Adventure you will need to have available a color wheel which uses twelve colors. (For example, see the illustration below which is created with pastels.) You, of course, are free to use any color wheel that is comfortable for you. The focus is on finding and painting with the colors of a split complement. See below, Monet’s “Regatta At Argenteuil” painted in 1872. Notice how the artist used the colors of red orange with the split complements of blue and green to create a beautiful landscape.

Step 1: Using a color wheel with twelve colors, select any three adjacent colors. For example, you might select Yellow, Yellow Orange and Orange. (See the illustration below.) You will be using the two colors on either side of the one in the middle. In our example, you will be using the Yellow and Orange.

Step 2: Next, find the complement of the middle color. Again, in our example, you would find the complement of Yellow Orange which in the middle color of the three adjacent colors. Looking directly across the color wheel from Yellow Orange you will find Blue Purple. This allows you to see that Orange and Yellow are the split complements of Blue Purple. So in our example your palette would be based on Yellow, Orange and Blue Purple.

Step 3: Now that you have found the three colors for your palette, choose more pastels that have varying values of the three you have identified. You will want to have lights, darks and don’t forget to find some that are neutralized, ie, grayed down versions of your three main colors. You may also use white and black if you wish.

Step 4: With your colors selected, feel free to paint any subject you desire. The surface, size and style are also your choice.

Step 5: Take a **photo of your three main colors and another of your painting** and send these to Kay Gordon (jkaygordon364@gmail.com) by **November 23rd** at 6:00 PM. Please **include the size and title of your work**. Feel free to comment on your process and your experience of working with a split complementary palette.

Step 6: Remember this deadline is firm and nothing can be posted that is received after 6:00 PM on November 23rd. This Adventure is so we can paint together, learn from each other and enjoy pastelling! Your art does not need to be in its finished form; just share what you have done.

ON YOUR MARK; GET SET; DO THE “SPLITS!”

Jane Best, Morganton

Morning Walk

9 x 12



A painting based on a photograph I took last summer while on an early morning walk near Doughton Park in the Blue Ridge Parkway in NC.

After seeing last week's demo and workshop with Susan Kuznitsky, I decided to do a watercolor underpainting using three split complementary colors based on Stephen Quiller's color wheel—cadmium yellow, ultramarine blue, and magenta.

This helped me to see the wide variety of colors combinations possible before selecting the pastel sticks for my painting.

It was a very challenging adventure and learning experience which I hope to try again.

Daphne Boder, Charleston, SC

This painting is 8 x 8 on yellow Pastelmat paper and I used a variety of hard and soft pastels. I am including the photo of the color wheel combination that I used. It's a favorite of mine.

Happy Thanksgiving!



Colors of Fall

8 x 8

Chris Carroll, New Bern, NC

Thanks again for this challenge. Not sure how I did, but here they are.

The first one is "Quiet Sunset", 8 1/2 x 11 1/2. I have a number of sunset pictures, and decided the Fall colors are the best to use. The cloud actually looks like a cloud in real life. ;)

The second one is "Home from the Market", 11 x 14 1/2. Farmer's Markets are great where you take some fresh food and bring home some fresh fruits and vegies.

Have a wonderful Thanksgiving!!



Quiet Sunset

11.5 x 8.5



Home from the Markets

11.5 x 8.5

Deborah Chase, Rutherfordton, NC

Sunlit Begonias

12 x 9



I enhanced my reference photo by editing it to dramatic warm then chose orange as the main color with blue green and blue violet as the split complements.

Since doing these Adventures I have used Pan Pastels more and more though the colors are limited. It was tough trying to get the right blue violet.

Happy Holidays !

Nancy Clausen, Swannanoa, NC

I almost forgot to send this. I haven't had much time to work on it, so it will be finished later. For my colors I used violet, yellow green and yellow orange. I used Stephen Quiller's color wheel to pick the colors I would use. The wheel showed 3 different shades I could use for each color. The paper I chose was something that I think someone gave me. They had used a ground for the paper. It's 10 x 13 ½. It's been fun to work with it. I used Terry Ludwig's violets, a combination of Rembrandt and Girault's for the other colors.

I call the painting Winter's Approach. It feels like it outside.

Have a nice Thanksgiving.



Winter's Approach 10 x 13.5

Diane de Grasse, Black Mountain



Split view Stonington

8 x 10



I needed a color wheel for this one! And I stuck pretty closely to the Blue main and Yellow Orange and Red Orange splits.

To establish only the values, I printed my reference photo in black & white.

I used inexpensive Master's Touch somewhat hard pastels - they should perform better on a sanded surface - with touches of soft pastel on medium gray Mi-Tientes paper.

Thanks again for this challenge, it was a learning curve and fun!

Jennifer Donolo, Burlington, ON, Canada

Thank you for this challenging Adventure. My effort needs much more work but the challenge was great, thank you.

My colours were Yellow Green and Blue Green, with the compliment of Red. Photos attached. I used only the colours indicated, no white, and used vine charcoal for placement, some block in, and in some parts of the painting.

Pastel on paper (Lux Archival, dry underpainting)



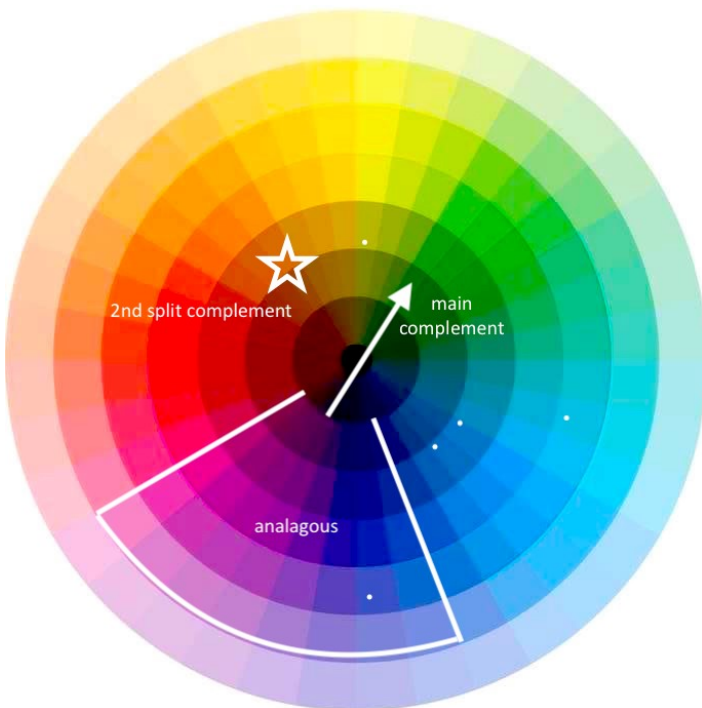
To the Beach! 9 x 6.75

Terrilynn Dubreuil, Asheville

Water Nymph

My initial colors are the mid-tones of the analogous deep magenta, purple, and purple-blue. The mid-complement is a warm green. And to add a tiny spice in a finishing accent (the shirt), I included a small amount of warm orange. (see the color wheel)

This is a painting (another) of my regular muse: my granddaughter. I have been wanting to paint this image for a while. She is young here and we had gone to the lake to explore. Her fascination with the water dripping is captivating. The photo is taken from above so it gave me an interesting, albeit challenging, angle for the figure. I want to work a bit more on this as I now see a few details that need adjustment. Thank you for this challenge. Split complementary color themes are my favorite.



Will Evans, Fairview



9x12 on Burgundy Art Spectrum Colorfix

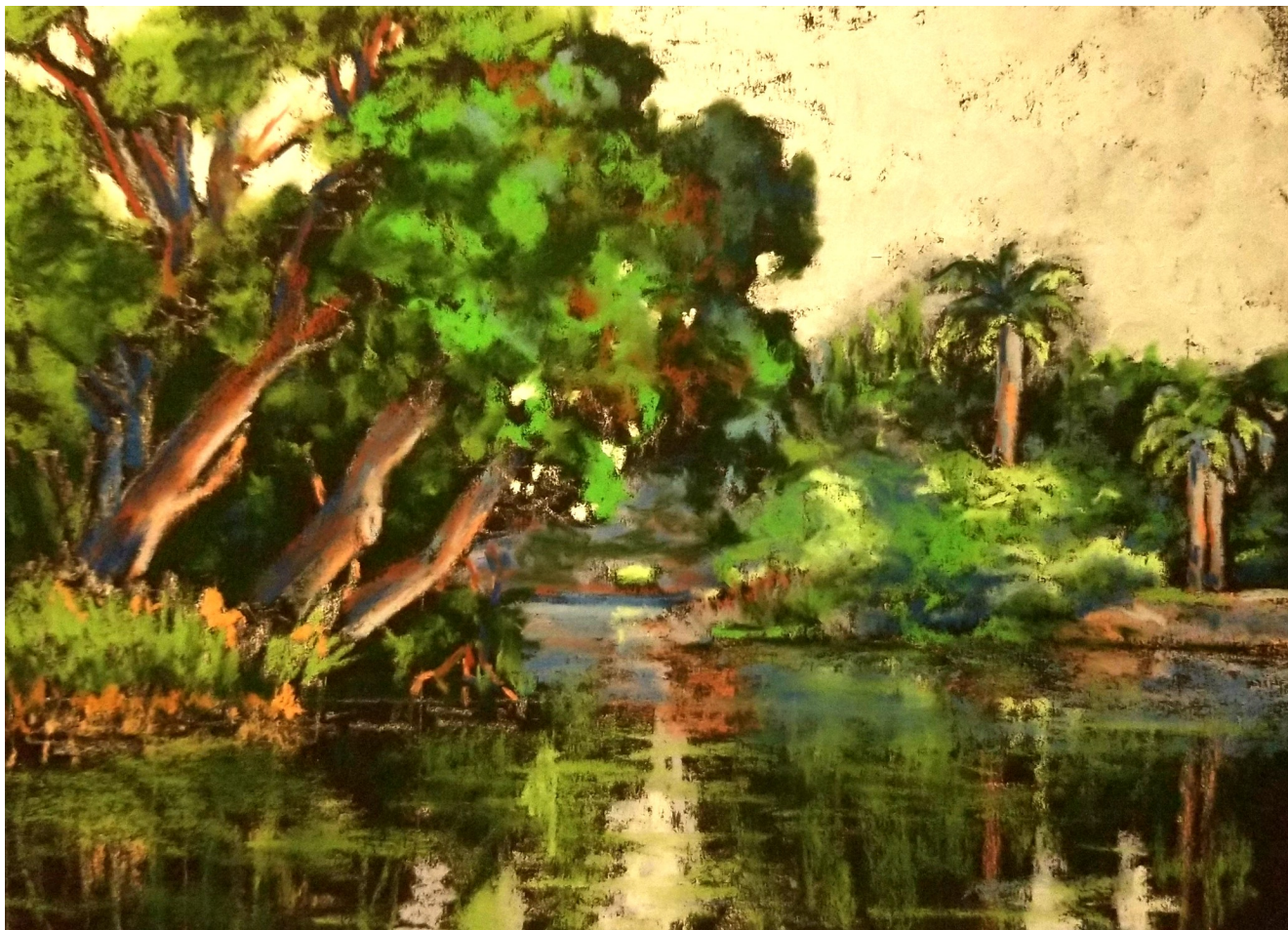
I blocked in with Nupastels, washed with alcohol and worked with the split complements.



Spring Marsh Tide

9 x 12

J Kay Gordon, Weaverville

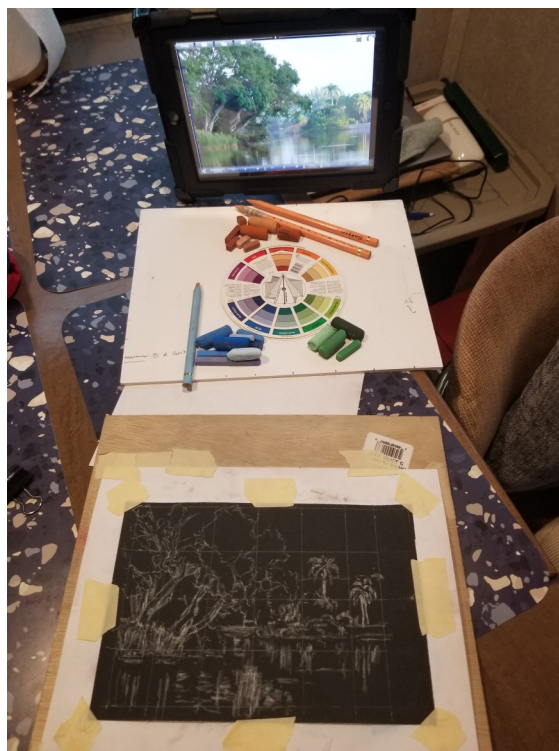


Across Lake Osborne 6 x 8

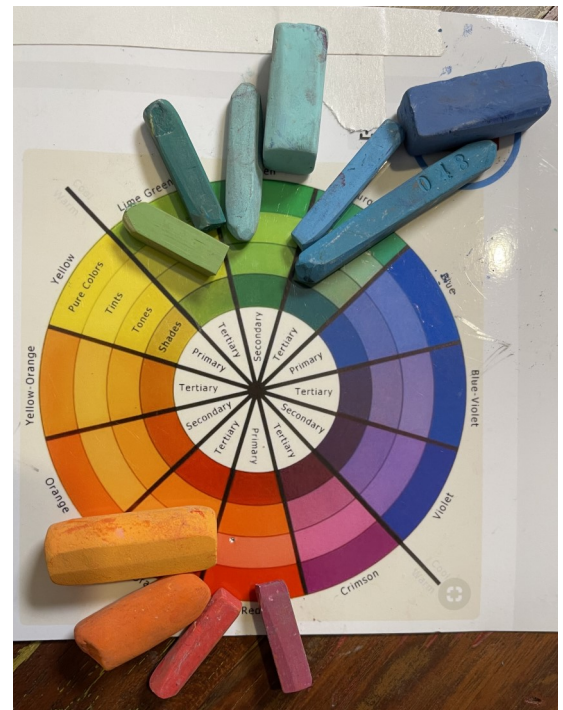
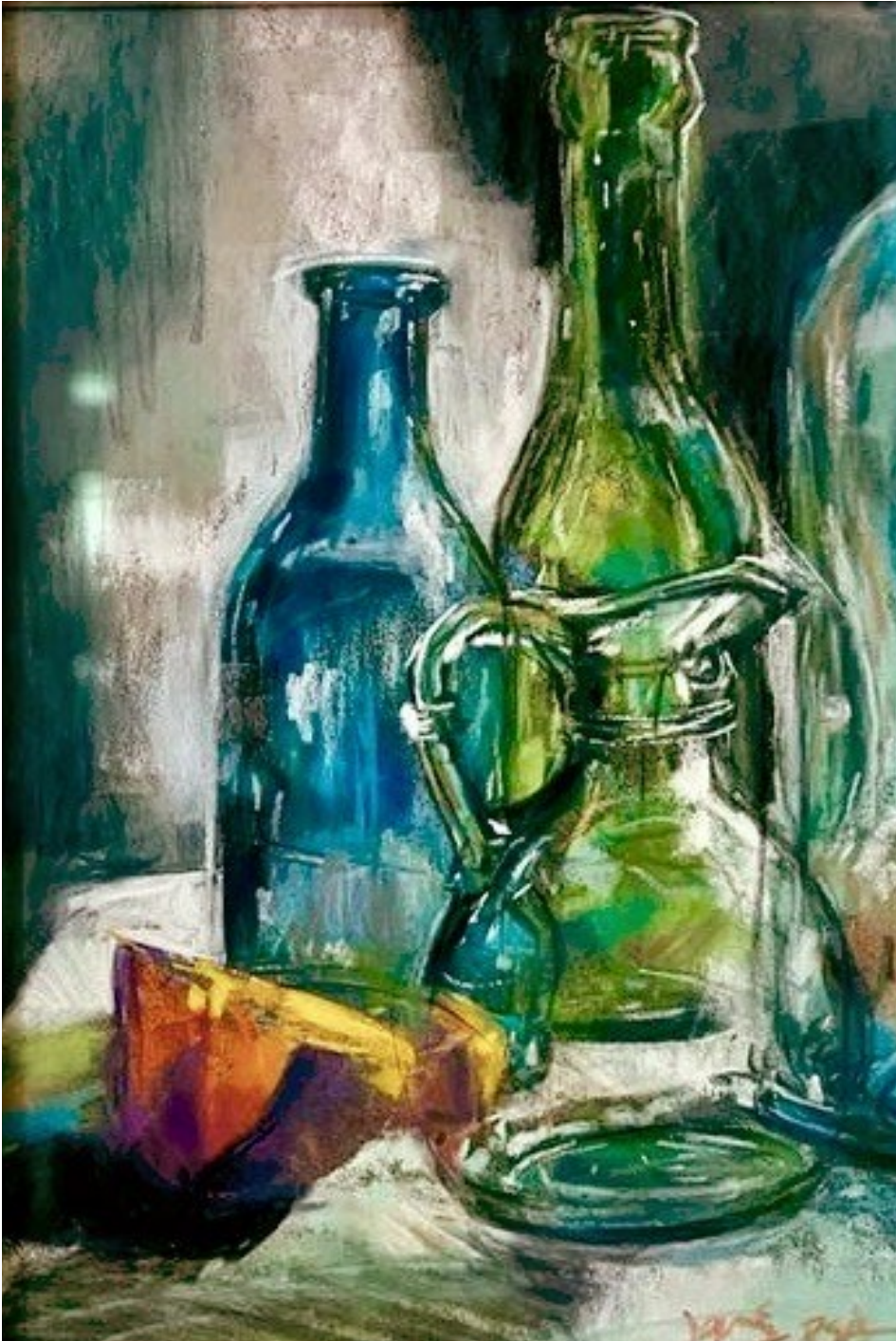
I'm working in our trailer again...spending some time in Florida for Thanksgiving with family, and then a couple of months on Jekyll Island, GA. The campground we're in is stretched along the shore of Lake Osborne, so it was a convenient subject for this Adventure. It was a rainy day, so I worked from a reference photo on my iPad.

I started with a white charcoal sketch on black Uart 800, and then pulled out my color wheel. I chose to work with Orange-Red and its split compliments, Blue and Green. I stuck with the rules, but must say that I REALLY missed the rest of my pastels! My phone camera shifted the colors a little (I like it better than the light blue which is the color in the sky as painted).

Pastels I used were Cretacolor, Sennelier and Conte pastel pencils.



Jeri Greenberg, Leland, NC



Orange Slice

9 x 6

My little painting, Orange Slice, packs a big punch at 9x6"

Most of the palette is blue/green high key notes. The orange slice which has notes of red and purple playing within it, is a nice counterbalance.

People are surprised when they see the amount of subtle colors that are in this little piece.

MaryAnn Grib, Gray, TN

Glorious Fall 8 x 10



Here's my submission. This was an interesting lesson. I just so happened to have some lovely Fall pics I took recently which worked well with the colors I chose.

This was done on 8x10 black multi media paper primed with clear gesso. Calling this "Glorious Fall".



Jeff Fahey, Ocean Isle Beach, NC



Before-the-Frost 16 x 14



Surface: UART 500 grit

This scene of the South Haven Lighthouse on Lake Michigan occurs frequently in March and April each year. After the winter ice clears from the beaches along the lake, we would still get gale force winds sweeping across the big lake. The waves would crash into the lighthouse and pier and send plumes of foam and water 30-40 feet into the air.

It appeared that the gulls enjoyed soaring in these winds, as they playfully dodged the explosive geysers of water that shot skyward.

I used the red lighthouse as the focal point for the painting and incorporated split-complements, blue-green and yellow green into the charging waves. (See attached a color wheel.)



Happy Thanksgiving to everyone! Alec



Green / Red Orange / Red Violet

Almost Split
10 x 10"
Pastelmat



Lynn Jackson, Brevard, NC

My composition is based on the colors orange, yellow and blue purple. I blended the colors next to them to give depth to the painting.

I liked the strong contrast of black against the orange and the total image reminded me of fall colors.

I had a hard time coming up with what to paint for this assignment, but am thinking of doing another abstract with a different set of split complementary colors.

I liked the challenge!

Thank you!

Imagined Forms 12 x 16



Karen Knaub, Lake Lure

I had 2 cats to paint for a friend, one a grey tabby and the other an orange tabby. And this challenge came up. It was perfect subject matter to work the color wheel. I chose the blue/purple and yellow/orange and just flip flopped for each cat. Using the same pallet.

This was difficult in that I usually don't limit my pallet, but I love how they came out.

Thank you for another great challenge



Maxie
12 x 9

George
12 x 9



I hope I got the directions right, but I have attached my painting 'Complementary Lilies' which is on Uart 400, 12" x 12".

Also attached is a photo of the three colors selected from the color wheel, and the reference photo.

Thanks for the challenge and a Happy Thanksgiving to everyone!



Margaret V Lyn-Soroken, Black Mountain

Title: Pausing Fall

Size: 9x12

Medium: pastels on color
pastel paper



I took this landscape scene photo because of simple shapes. This sketch I tried to apply color requirements though I lose it and just color...

Happy thanksgiving everyone

Meryl Meyer, Weaverville



Scotland Sunset

9 x 12

Color Fix Sand Colored Paper

From my own reference. This was a great challenge. I welcome learning and adapting using color theory. Something I need to do more of. I used assorted hard pastel for underpainting and assorted soft pastels.

I love how the Orange Yellow and Blue Violets bounce off each other enhancing the mood of the scene.

Happy Thanksgiving Everyone!



Andrea Stutesman, Black Mountain

Medium: Soft and hard pastels

Tough assignment, but tried to meet this challenge head on. Hope I got close to my intention. Orange - Yellow Split with Blue Violet complement



Winter Sunset
12 x 9

Mary Tallman, Jackson, MI

Monument Poetry XXVII Those Left Behind 11 x 14



Monument Poetry XXVII Those Left Behind

11 x 14 pastel on Richeson pastel paper

I primarily used very light yellows creams and violets with an ochre for the figure. The landscape was greens with red and some blues turquoise in the sky.

Thanks!

Mary

Sawyer Bear Whitemiller, Cape Coral, FL

At first it was very hard to come up with something that had split complimentary colors naturally.

When I was researching different objects with split complimentary colors, I came up with this chameleon. It is a panther chameleon and I love the idea that if you paint a chameleon, you can alter it (or find one) to be any color.



The Christmas Chameleon 7" x 7 ½" Pastel on U-Art 600-grit sanded paper

Much appreciation to all who participated and shared their paintings and their comments!