

APS ADVENTURES IN PASTEL 2024!

Adventure E-4

"STYLING"

Welcome to our Series E Fourth Adventure!
Paintings due by 6pm April 24!

This Adventure is all about painting in the style of one of your favorite artists. People often talk about a painting that's "just not my style" or they say "I can recognize the style of that artist anytime". Many artists will say it took them years to find their style and others will confess they are still looking for theirs.

However you look at it, style is a hot topic among artists and art patrons. Often the conversation goes into how the artist developed or changed their style over time. And then, of course, the discussion centers on which period or style is preferred. In this Adventure we want to focus on style and give you the opportunity to paint in the style of an artist you admire. You might want to consider who this

artist might be by considering the question: "Whose art have I always admired?"

Usually a favorite style can be identified by thinking about an artist whose work you never grow tired of seeing or you are always eager to see what they might produce next. Looking at the art world we're aware that the number of styles over the centuries is truly difficult to number.

Therefore, in this Adventure, we're asking you to limit your choice of artist and style to the 20th and 21st century. We would like you to consider painting in the style of a contemporary pastel artist, if possible. This is not a requirement, but please do so if they are a pastelist you deeply admire.

So let's get started:

Step 1: Consider the style of the artist you want to follow as a model. Remember to stay within the 20th or 21st century. Choosing a contemporary pastelist would be awesome, but not required. The Pastel Journal would be an excellent source for ideas.

Step 2: Select the subject, surface, size and palette colors that you feel would allow you to paint in the style you have chosen.

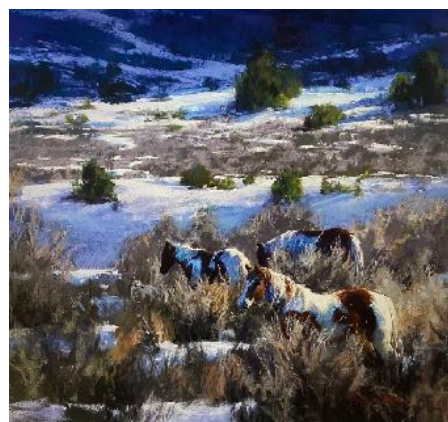
Step 3: Take a photo of your painting. Remember, it does not need to be in its finished form. Name your photo like this: Lastname_Firstname_Title_Size. Send your photo to apsmedia828@gmail.com and be sure to tell us the artist's style you selected and why this style is so attractive to you. Any further comments you want to make are most welcome! We all learn from hearing the experiences of other artists!

Step 4: Feel free to include a photo of a painting by the artist you selected. This step is optional, but it would be interesting to see a painting that inspires you.

Step 5: Remember, this deadline is firm. Nothing can be posted that is received after 6:00PM on April 24th. As always, the goal is NOT a finished piece, but rather to participate in taking on a challenge with other artists and sharing our journeys with each other. And, of course, to enjoy painting with pastels as we do it.



Tony Allain "Marina Reflection"
www.tonyallainfineart.com



Kim Lordier "Azure Wonderland"
www.kimfanherlordier.com



Teresa Saia "Santa Fe Cottonwoods"
www.teresasaia.com

Reminder:

you must be a member to participate. Join or renew at AppalachianPastelSociety.org

Completing all six Adventures in this series qualifies the member to this summer drawing:

Win a \$100 Gift Certificate for



DAKOTA ART PASTELS
your pastel specialist!

**And FREE
2025 APS Membership!**

Get ready! Get set! Start styling!!