

## MEMBER MEETING: DEMO/WORKSHOP

*Featuring*  
***Kathleen Newman***

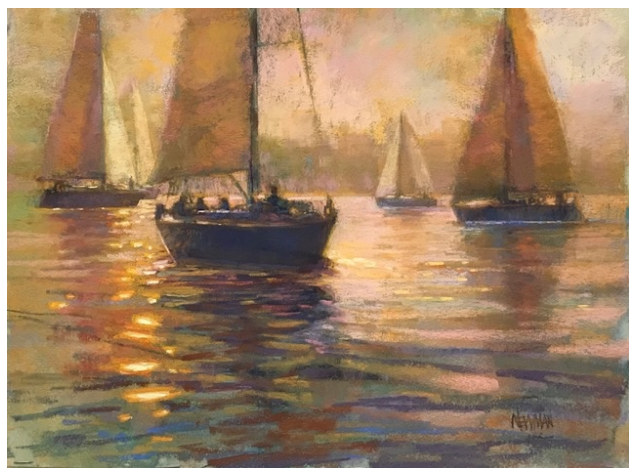
**Saturday, March 8, 2025**

**Meeting and LIVE Demo 10 am - Noon • Workshop 1:15 - 4:30 pm**

Native to the Chicago area, Kathleen Newman combines a sense of focused observation and sensitive interpretation in her award-winning pastel and oil paintings.

Inspired by the turn of the century Tonalist and Impressionist painters, Kathleen creates small studies and sketches on location and uses that information to work up to larger paintings in the studio. She strives to capture the certain mood of the moment and bring that subtle nuance to each painting; the color, light and shapes that help create a sense of place and atmosphere.

Kathleen has received the honor of Eminent Pastelist and Masters Circle distinction from the International Association of Pastel Societies, is a Chicago Pastel Painters Master, and a Signature Member of the Pastel Society of America, the American Impressionist Society, the American Society of Marine Artists, the American Transparent Watercolor Society and is a member of the Palette and Chisel Academy of Chicago.



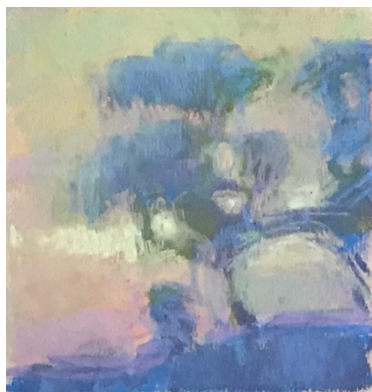
Her work is held in many private collections as well as the Ritz Carlton Orlando, Ameritech, IBM, MCI, Disney, Deloitte, and American Dental Association with recent additions to Prentice Hall and Northwestern Memorial Hospital.

Kathleen currently teaches online and in-person pastel, watercolor, and urban sketching classes at the historic Old Town Art Center in Chicago, as well as in workshops throughout the country.

[www.kathleennewman.com](http://www.kathleennewman.com)

### AFTERNOON WORKSHOP

#### ***Exploring Mood and Atmosphere through Color Harmony with Kathleen Newman***



Kathleen will demonstrate how to interpret your photo reference and create more expressive, personal work using a variety of color strategies upon a single composition. Exploring color through its definitions of hue (the name of a color), value (light to dark on the tonal scale), chroma (saturation from bright to neutral), and temperature (warm and cool), we will find that a single image source can yield multiple expressions.



Beginning with black and white images, she will provide methods of designing strong compositions using simplified shapes of the light and shadow pattern. Using this value plan, Kathleen will provide numerous sketches to explore color wheel harmonies (monochromatic, complementary, analogous, etc.) and value strategies (high, mid, and low key). Choosing one, she will create a toned underpainting and demonstrate a variety of painterly techniques in layered pastel to create a final painting.

Exploring color relationships and playing up and down the value scale provides a unique opportunity to create mood and mystery rather than detailed accuracy in your paintings.



**Workshop Cost is \$60**

**NOTE...** that to view the morning DEMO you must be a current APS Member. Current members will receive a link to the morning Zoom in their email.

***The 2025 Membership Year starts on Jan 1. Have you renewed?***

***IF YOU WISH TO RENEW OR JOIN, click the "JOIN/RENEW" tab at the top of the website page... or use the following link...***

**[http://www.appalachianpastelsociety.org/?page\\_id=142](http://www.appalachianpastelsociety.org/?page_id=142)**