



---

## Adventure G-5

*Let's go to... BEDS!*

Flower beds, hammocks, cosy beds, empty beds, garden beds, sofa beds, stream beds... and on! What a delight to see such a wonderful variety of beautiful paintings from our **20** APS artists!

***Enjoy the show!***

---



Adventure G-5

*Let's go to... BEDS!*

Hello!

Our kitty Simon nestles into anywhere he can sleep (hide) . This is his recent “bed”. It is usually darker in our living room and this sofa is the perfect place to sink into. A cardboard box would do just as well. Thank you for another happy time sketching!

Title: I want to be alone 🐱

Size: 9x6 black uart paper

Assorted soft pastels and pastel pencils

**Kathy Amspacher**  
**Hendersonville, NC**





Adventure G-5

*Let's go to... BEDS!*

Growing up, we had ant BEDS. They became ant hills after the fire ants invaded. I thought about ants in beds, but decided on this.

"Ant Bed"

7" x 5" pastelbord

Used every type of pastel I have and a little pumice.

**Claire Benton**  
**Riverview, FL**





Adventure G-5

*Let's go to... BEDS!*

This is “Beth’s Flower Bed.” It is 8 x 10  
I don’t usually paint buildings but I have loved the  
photo for a long time and decided it was time.

**Daphne Boder**  
**Pittsboro, NC**





Adventure G-5

*Let's go to... BEDS!*

This was painted this week with the Plein Air group at a local flower dealer. A quick paint with fellow painter in my scene. 9x12 on Uart 400. It was a beautiful day under a large tree for plenty of shade.

**Christina Carroll**  
**New Bern, NC**





Adventure G-5

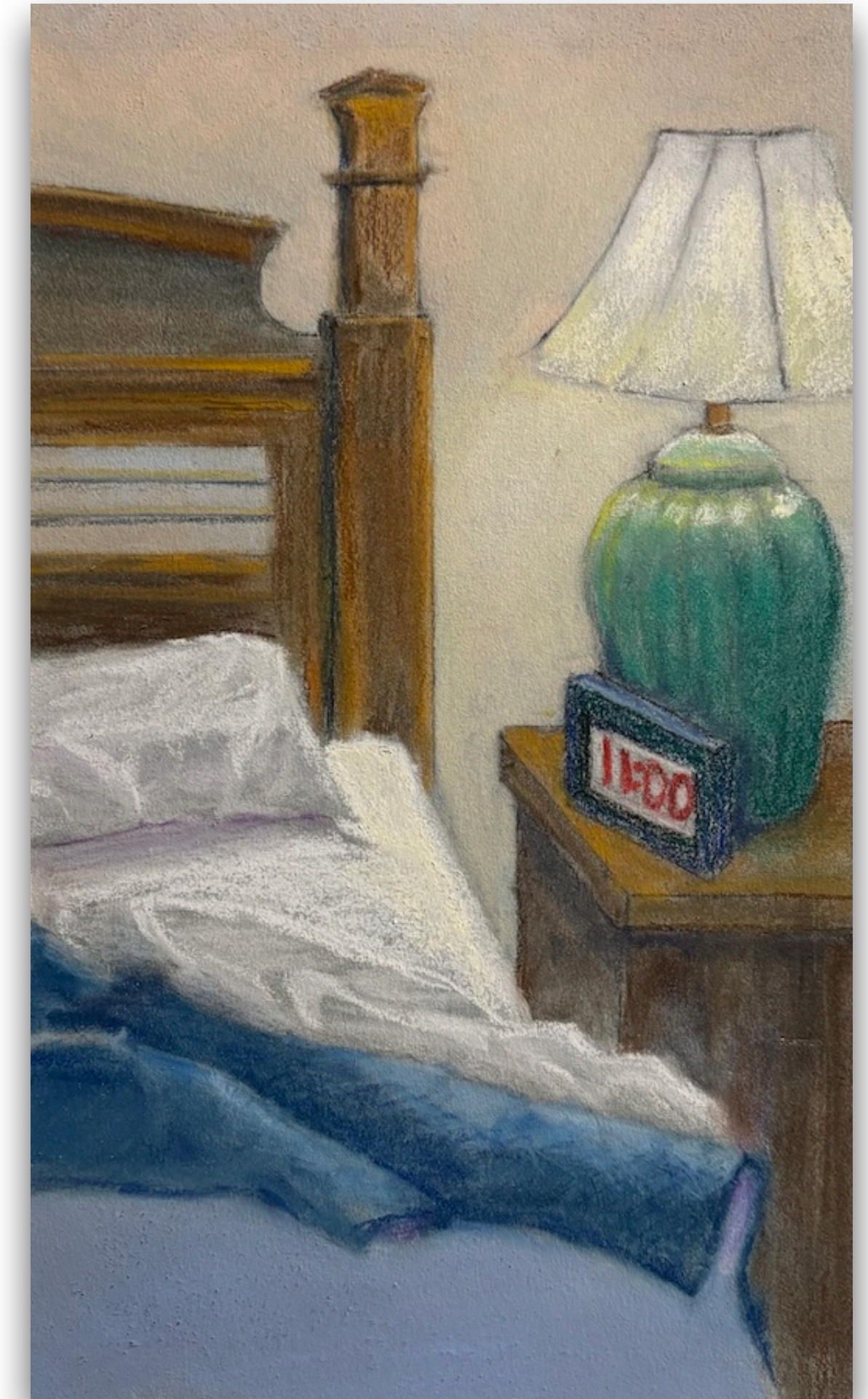
*Let's go to... BEDS!*

I had several ideas for this adventure, based realistically and on word play, and couldn't decide what to send, so here are two. Hope all are enjoying the summer!

**Deborah Chase**  
Rutherfordton, NC



Title: "Bedrock"  
7.5"x9.5"



Title: "Bedtime"  
Size: 10"x6"



Adventure G-5

*Let's go to... BEDS!*

I named this A Bed for a Bear.

I'm still having to paint with my left hand, si it's a little off kilter, but since I need to, I'm enjoying the challenge and it keeps me busy.

The painting was done on an 8 x 10 Ampersand board. I used Faber Castel and some Girault. Getting lines and shapes were a bit of a problem. Will work on the piece again when I can use my right hand. It was fun to imagine a bear having a bed in the woods. Around here you never know.

**Nancy Clausen**  
**Swannanoa, NC**





Adventure G-5

*Let's go to... BEDS!*

“Hellbender on River BED” inspired by hearing that this shy and endangered creature was further threatened by Helene.

9 x 12 U-Art with soft and hard pastels.

**Pam Clifford**  
**Hendersonville, NC**

*“When the power of love overcomes the love of power, the world will know peace.”*

*Jimi Hendrix*





## Adventure G-5

### *Let's go to... BEDS!*

#### “Utopian Taro”

I grew this Taro (*Colocasia esculenta*) in one of my raised beds. I used Hahnemuhle Velour, with a variety of soft and semi-soft pastels.

I was one of the community seed growers for the Utopian Seed Project for a few years. They are a non-profit working toward adapting plants to our region to embrace biodiversity for resilience in the face of climate challenges.

If you want to know more about this, my garden blog is about my participation in seed trials and other garden projects. <https://colorfulandseasonal.wordpress.com/>

**Linda Cook**  
**Asheville, NC**





Adventure G-5

*Let's go to... BEDS!*

Searching through my photos for "beds" I came up with this shot of naptime for my "boys". Dan is the one with long legs, Harvey his faithful companion. I had fun exaggerating the foreshortening, saving challenging fabric folds for another time. It's on Art Spectrum olive paper in a mix of pastels with some pastel pencil for details.

"Two on a Bed"

12 x 9

Diane de Grasse

Black Mountain, NC





Adventure G-5

*Let's go to... BEDS!*

"Sleeping Cloud"

11x14"

When she was about 8, I took my granddaughter on a trip to Monhegan Island in Maine. We had a most wonderful week. As she was sleeping, early one morning, the sun came in and made the white linens just glow around her .. feeling like a soft cloud holding her.

**Terrilynn Dubreuil**  
**Asheville, NC**





Adventure G-5

*Let's go to... BEDS!*

This challenge was a toughie, but I settled on a “stream BED”, titled “Lazy River”.

The 6x8 piece is on UART 400, blocked in with nupastels, set with alcohol, finished with Terry Ludwig.

**Will Evans**  
**Fairview, NC**





Adventure G-5

*Let's go to... BEDS!*

This was a challenge as I have struggled with folds forever!

This allowed me to tackle them once again. I think I have more work to go but it was fun.

I used a variety of soft & hard pastels. 9x12  
Thanks again for these great challenges every month.

Have a strictly artful day,

**Pat Fenda**  
**Tampa, FL**





Adventure G-5

*Let's go to... BEDS!*

Hi Everyone!

Here is my painting for Adventure G-5. I chose a dog bed... all dogs should have a cozy bed of their own to snuggle up in. I actually started this painting a few weeks ago and then set it aside. When the topic for this month's adventure arrived, I decided that it would be a perfect fit and a good incentive to finish it.

Title: A Friend for Life

Size: 16" x 20"

Surface: UART 500 grit

Pastels: Rembrandt, Great American, Terry Ludwig, Carb-Othello pastel pencils

Looking forward to seeing the new show!

**Alec Hall**

**Hendersonville, NC**





Adventure G-5

*Let's go to... BEDS!*

Title: At Least It's Not Twee!

LuxArchival paper with various  
pastels

Size: 4 x 5



I've seen plenty of flowers planted in  
an old bedframe...a 'bed of flowers'.  
My dear friend who lived in England  
for many years called those "Twee" I  
assumed she meant "too cutesy". I  
used an old brass headboard as a  
trellis for a vining Mandevilla.

**Kathy Hutchinson**  
**Rutherfordton, NC**





Adventure G-5

*Let's go to... BEDS!*

"Whose Bed Is This??"

5x7 on pastemat. A bed is a bed,  
right? 😊

Jan Jackson

Hendersonville, NC





Adventure G-5

*Let's go to... BEDS!*

Hello. Here is May submission  
"River Bed".

5x7 on UArt 400, Mount Vision  
pastels and Nupastel. Reference  
photo from Unsplash app.

I moved to NC in September. I have  
just started painting again.  
Appreciate this series to help me  
get started again.

**Annette King**  
**Sophia, NC**





Adventure G-5

*Let's go to... BEDS!*

Title catnap

Size 9x12

Color pastel paper various pastels

**Margaret Lyn-Soroken**

**Black Mountain,NC**





Adventure G-5

*Let's go to... BEDS!*

"Naptime"

5.5 x 7.5

Grey toned Sketch paper

Used tonal markers, pastel pencil, nupastels and vine charcoal

My hubby and our kitty Rosie napping, a daily favorite pastime. I captured this image a few years ago. I loved the peaceful cozy feeling, and soft pastel hues.

I plan to scale up this to a larger painting using soft pastels.

I enjoyed this challenge

It got me into a peaceful, comfy zone. Thank you.

**Meryl Meyer**

**Weaverville, NC**





Adventure G-5

*Let's go to... BEDS!*

Hi Adventure Coordinator: This challenge was difficult to do. The paper I had was small so the figures are too, and therefore impossible to detail with clunky pastel sticks. Next time I'll rethink paper size to subject. But like all the challenges, it is a fun way to test yourself and identify where you can work to improve. I have learned more from these "trials" than expected and use them to strategize what to practice.

Thanks again for doing these!

Title: Turn the Page

Size: 9 x 12 Colorfix paper

Pastels: Unison and Girault

**Pat Quigley**

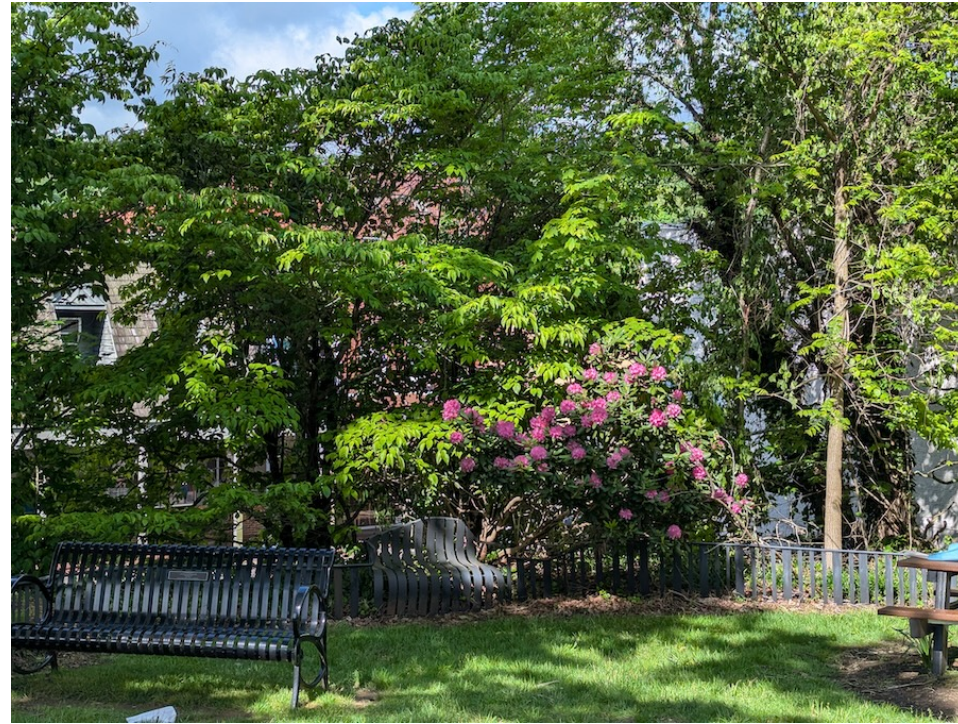
**Norristown, PA**





Adventure G-5

*Let's go to... BEDS!*



"The Bed at the Jones House"  
9x12, assorted soft pastels. On  
Uart 400lb. paper. I did this as a  
Plein Aire.

Ruth Whitaker  
Newnan, GA

